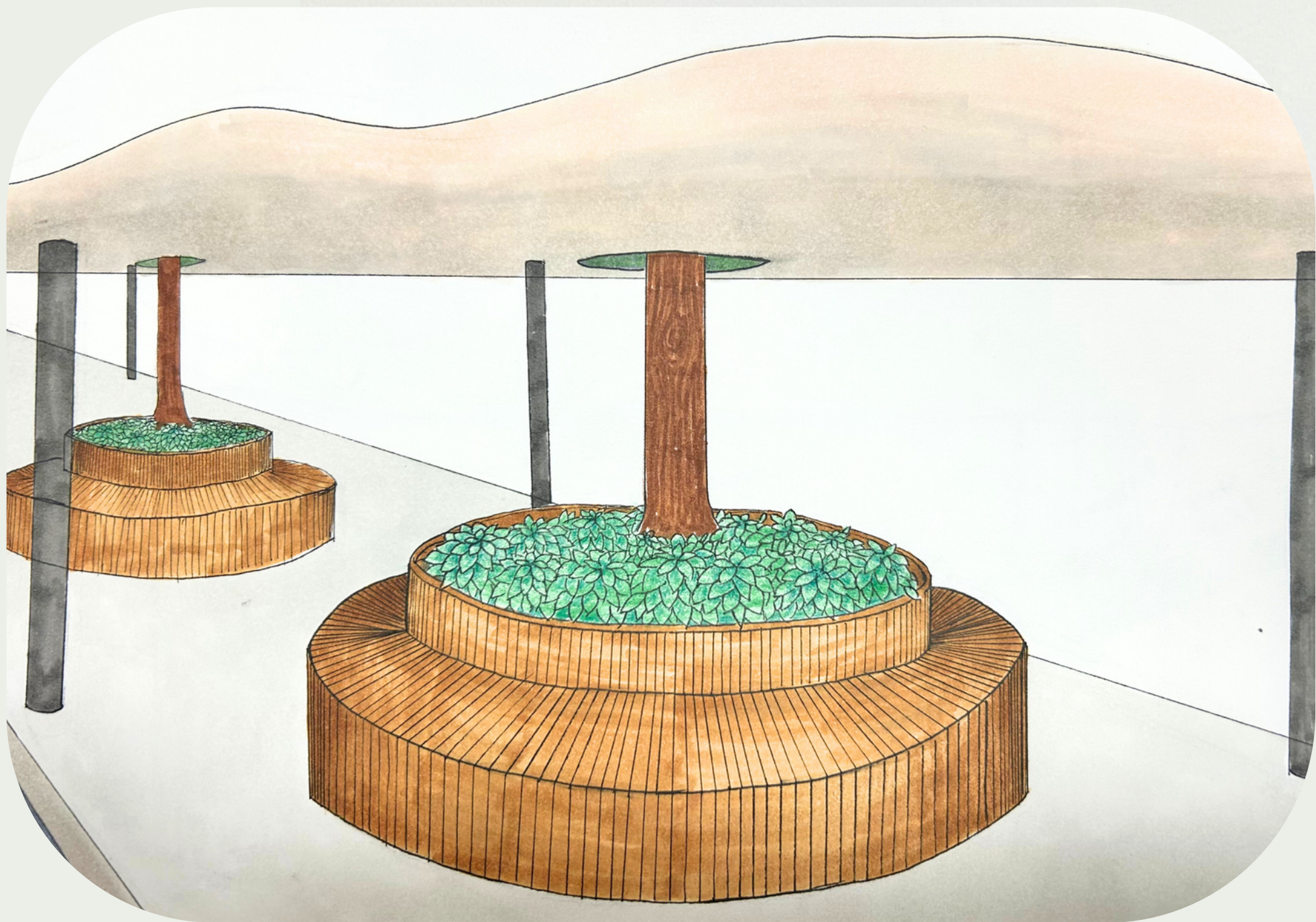
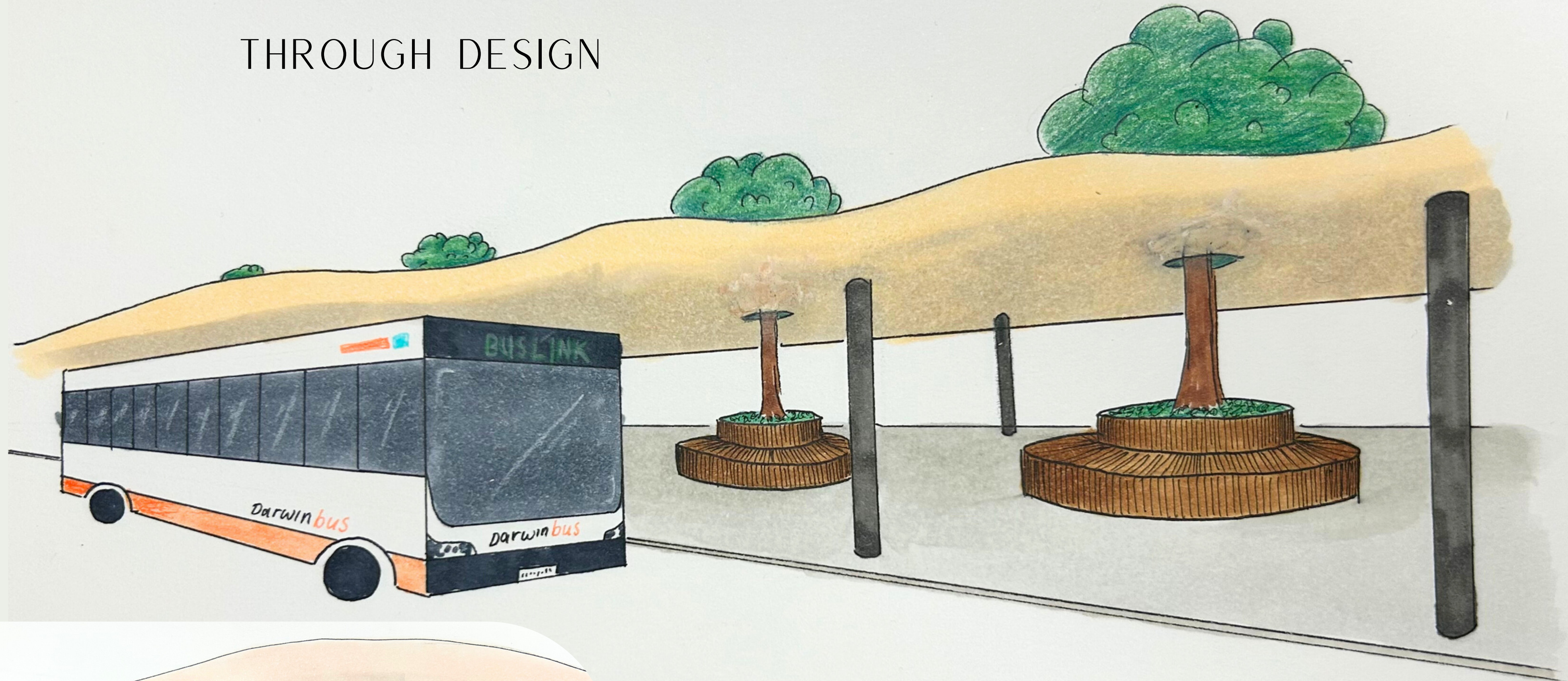


IMPROVING SOCIAL INTERACTION AND SUSTAINABILITY THROUGH DESIGN



Relocation from back street to publicly visible site



Feature Tree: Pride of India
Lagerstroemia Speciosa



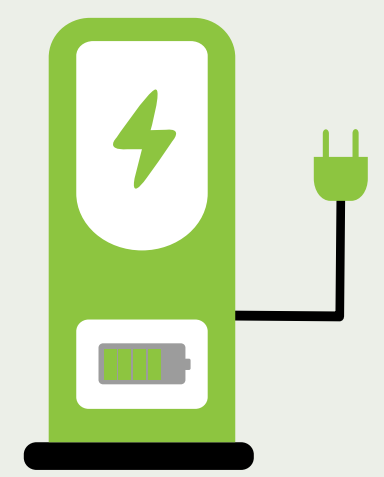
Gardenia white star
Gardenia psidioides



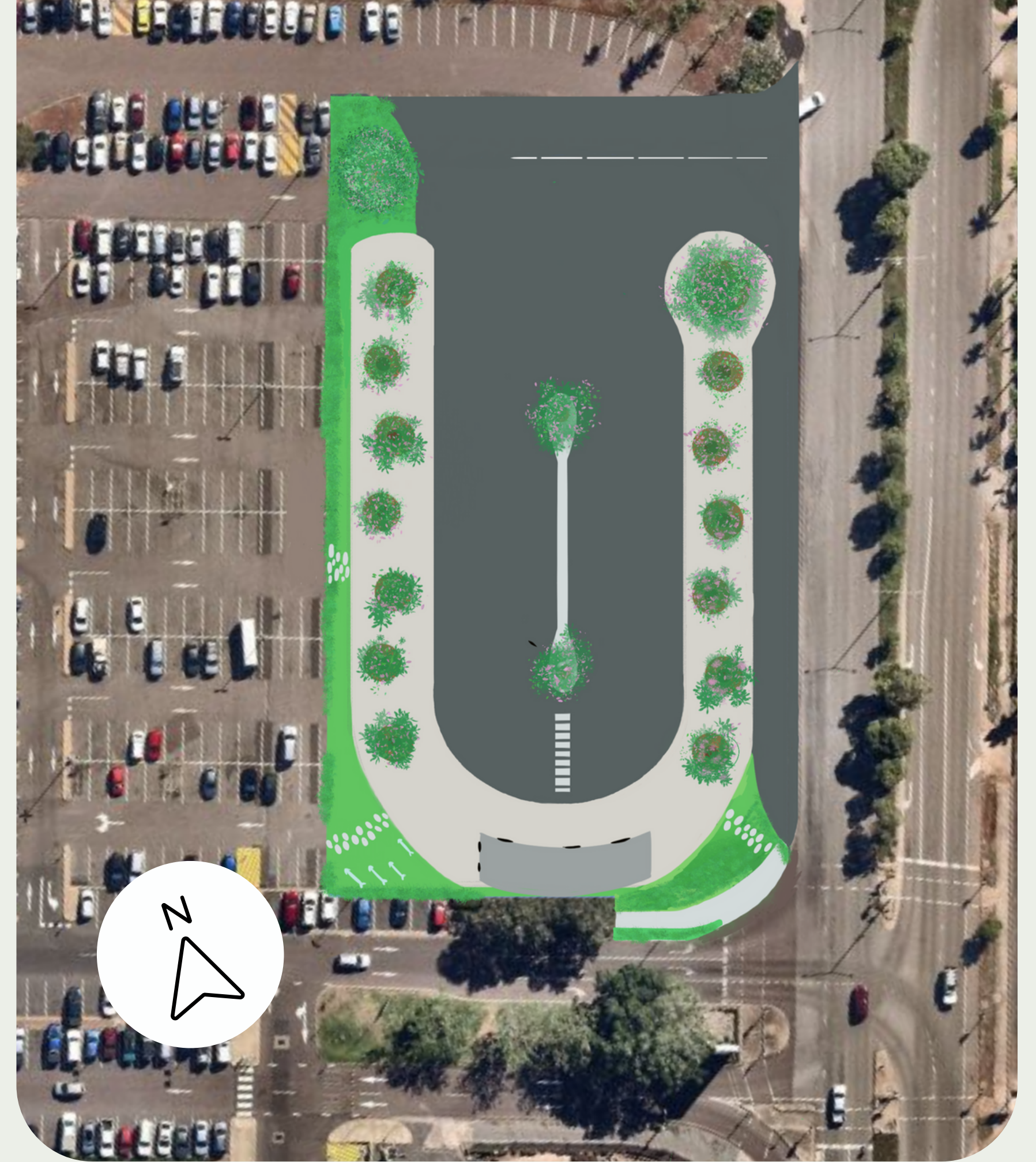
Chinese evergreens
Aglaonema



Electric Bus charging infrastructure



Stringy Bark Seating and cladding



Functional Art Bike Racks

Transforming Bus Interchanges to foster community interaction and reduce antisocial behaviour.

With the increased evolution of digital technology into our everyday lives, face to face interactions have become less common. Now, more than ever, we recognise the importance of physical 'third places' to foster social interactions.

Public spaces like bus stops provide an opportunity to converge and connect with others in the community. Unfortunately, there is an increased presence of antisocial behaviour at bus stops and interchanges, this provides an opportunity to redesign the standard concrete jungle bus interchange into a vibrant third space, that through its design will provide opportunities for positive social interaction, increase sustainability measures to move with current and future technology and reduce antisocial behaviour.

Observing the behaviour and challenges at our local Casuarina Bus Interchange we noted a series of design changes that could increase safety, prioritise community engagement and improve environmental impacts whilst also transforming the transport hub into a welcoming space.

Our design approach focused on:

- an open and well-lit layout to ensure clear visibility and natural surveillance.
- Public art installations and interactive digital art projections to inspire community engagement and spark conversation, these artworks would be an ongoing collaboration to continually bring in new art and highlight local artists and attractions.
- increased vegetation and green spaces to reduce concreted spaces, allow alternative natural shaded seating areas
- comfortable shaded seating thoughtfully placed to face other seating and foster face-to-face interaction
- accessible and clean amenities that are inclusive in nature.
- Electronic charging facilities for future EV busses.
- Water capture and storage to maintain the increase in trees.
- Solar panels on the interchange roof to contribute to EV power and lighting the facility during the evenings.

These changes intend to transform the space to a welcoming environment that is engaging, comfortable and instils pride and a sense of safety in its users.

Super Studio 2023 Resource Links

Inspiration

<https://www.cheshire-live.co.uk/news/chester-cheshire-news/chester-bus-interchange-wins-regional-13753907>

[Curtin Bus Interchange - Place Laboratory](#)

<https://design-milk.com/solar-powered-bus-station-produces-its-own-energy/>

<https://concreteplayground.com/brisbane/design-style/sustainability/these-garden-topped-book-swap-bus-stops-are-the-transport-hubs-australia-needs>

<https://www.transport.nsw.gov.au/projects/current-projects/mac-park-precinct-and-bus-interchange>

Products and Landscaping

[Aglaonema Plant: Chinese Evergreen Plants You Need To Grow - Epic Gardening](#)

[Gardenia psidioides \(Glennie River\) — Territory Native Plants](#)

[Art | Small Fish, Streetscapes](#)

Busses, antisocial behaviour and site research

[Monash University to trial new electric buses in a bid to reduce public transport emissions - Art, Design and Architecture](#)

[NT Atlas and Spatial Data Directory](#)

[Sustainability | CDC Northern Territory](#)

[Ongoing violence on Darwin buses cause resignations of drivers, service interruptions | NT Independent](#)