

**SUPERSTUDIO 2020**

# **TUNNEL OF LIGHT**

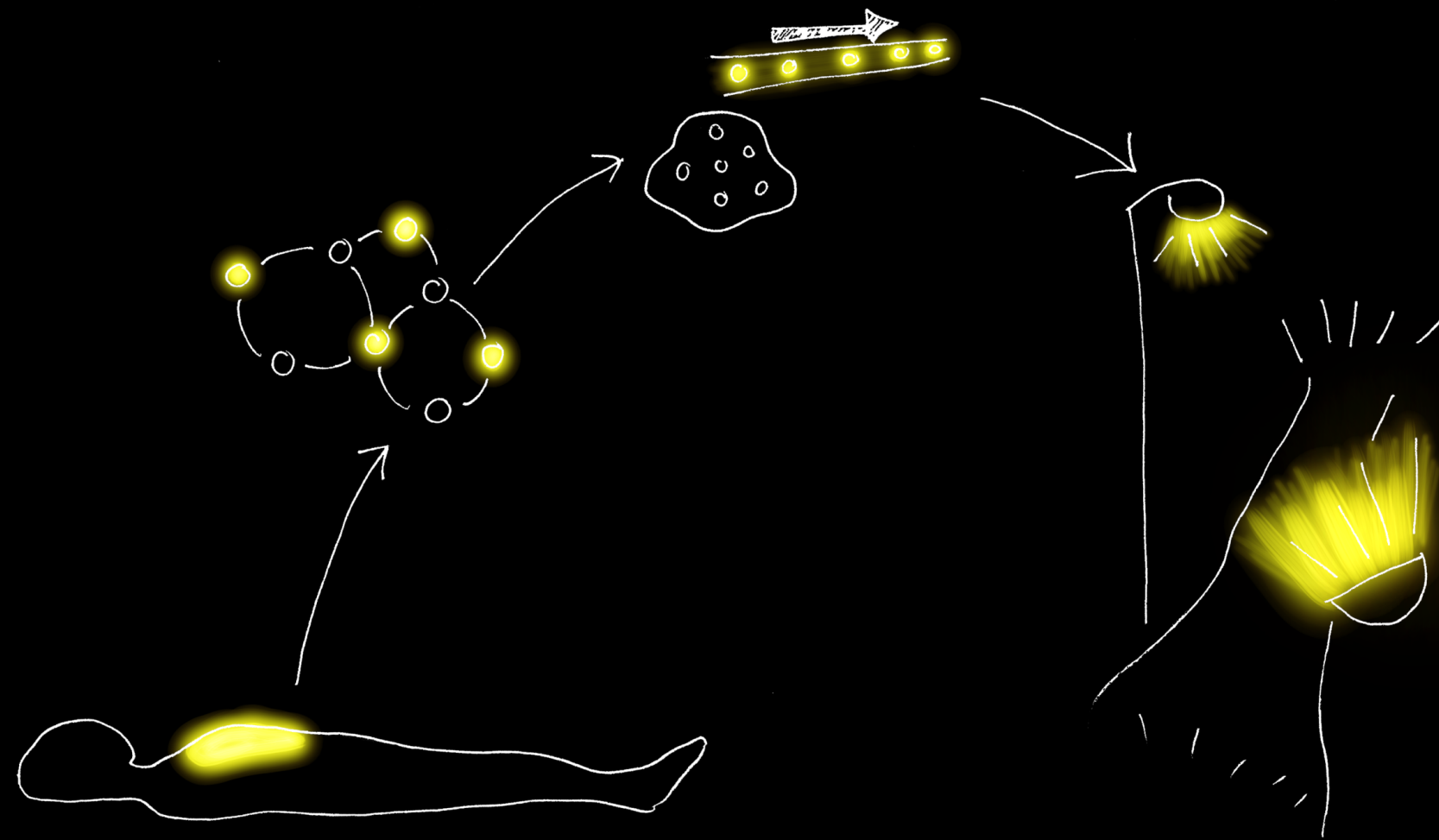
**NHI TRINH, ALEKSANDRA KUCZEK, SHIRLEY ONG**  
**THE UNIVERSITY OF ADELAIDE**



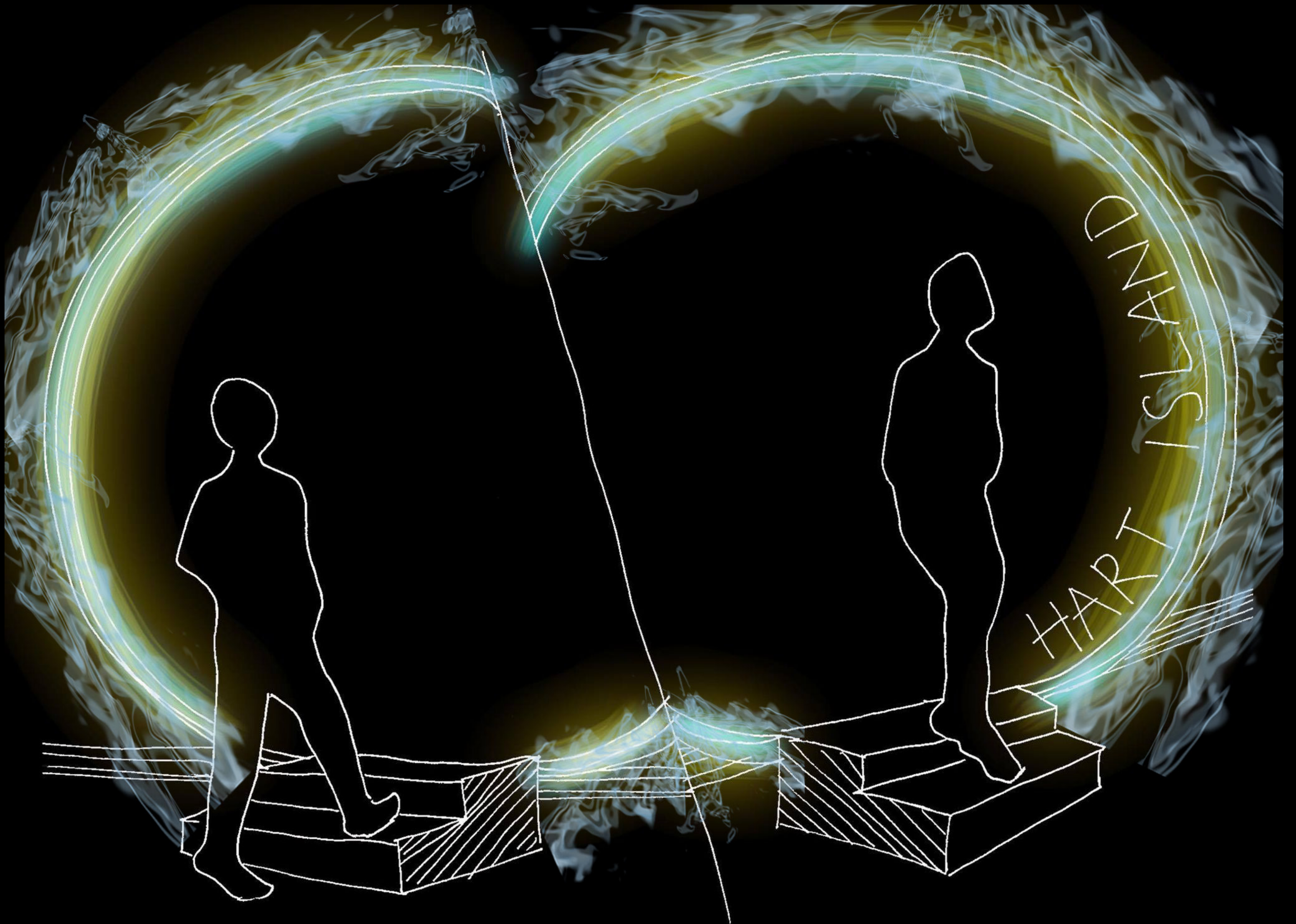


Interior View





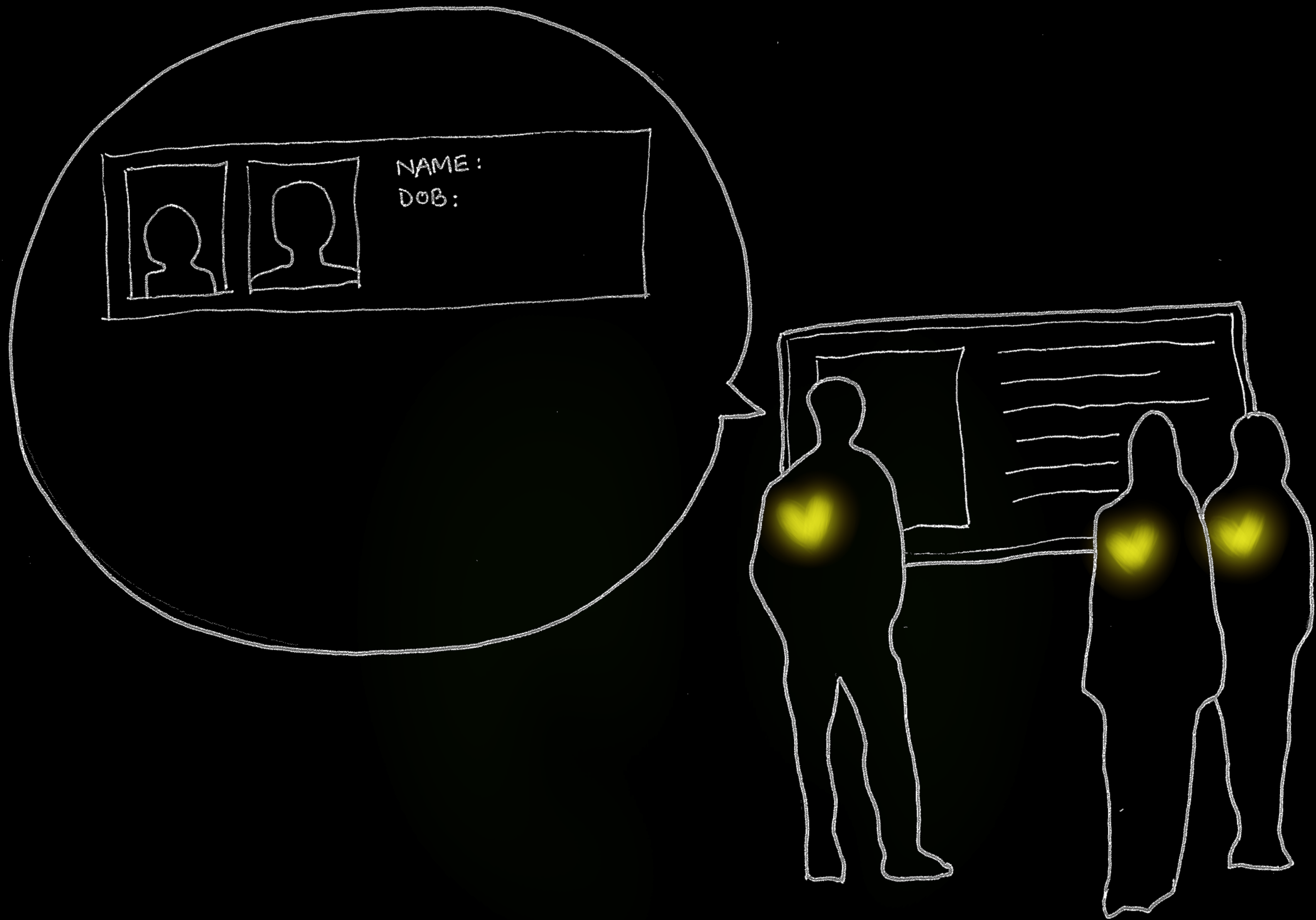
YOU ONLY LIVE THRICE

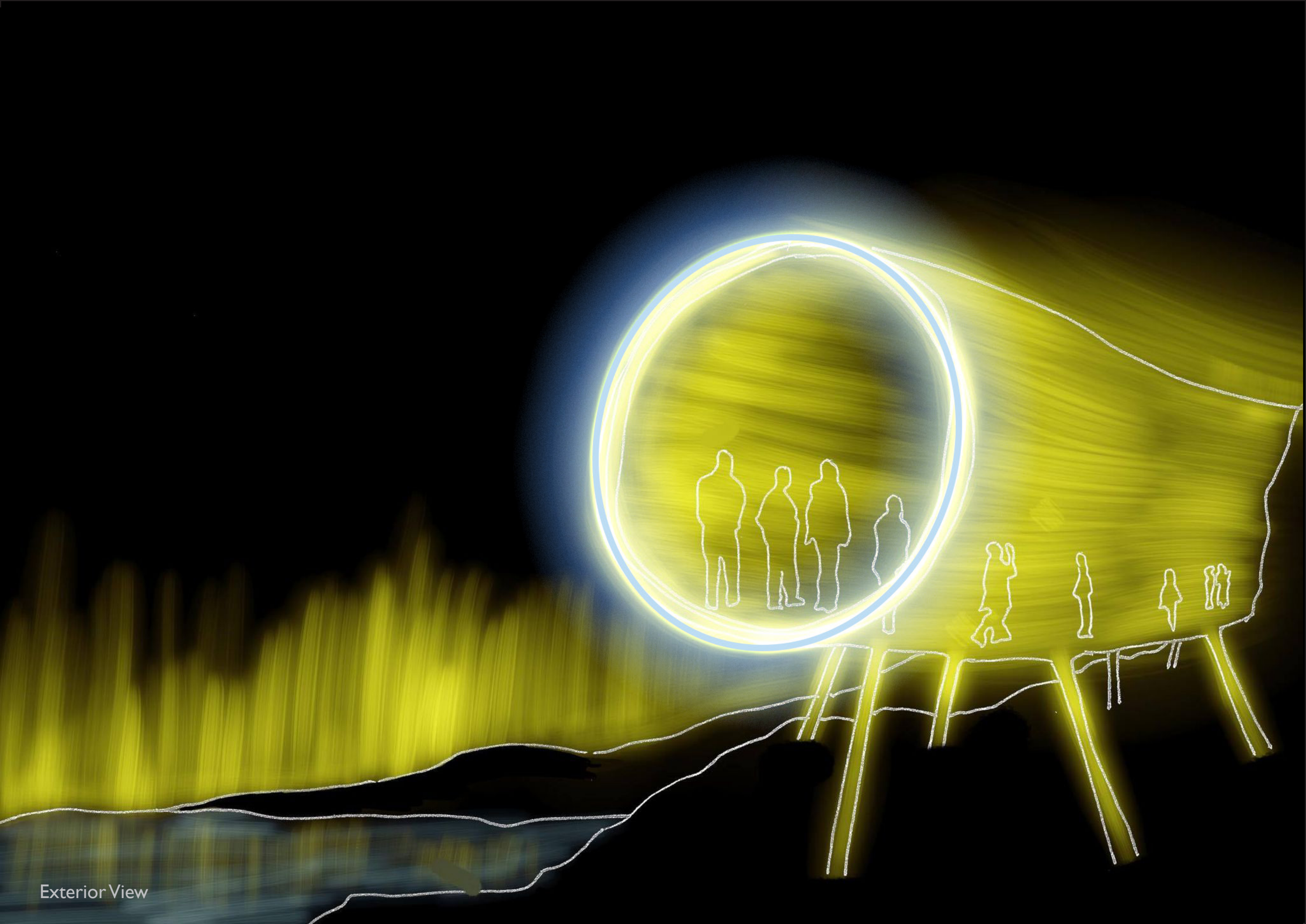


Access Point: New York City

End Point: Hart Island







Exterior View



## **Tunnel of Life**

This year, Covid-19 has affected people worldwide. There are massive amounts of fatalities and some do not have the means to take care of private burial ceremonies, for various reasons. We aim to create a place on Hart Island that represents how these people are still an honoured part of the community, regardless of how they lay to rest.

Our design concept encompasses light to form a tunnel aboveground of Hart Island. The light energy will be generated from decomposed bodies of the victims using Microbial Fuel Cell (MFC) technology, where the decomposing bodies are converted into electricity using bacteria. This is an extraordinarily powerful way to convey the message to the world – the victims are still honoured for their contribution to the world even after their unfortunate deaths. It also creates a sense of affinity when people walk through the tunnel to realize that it is a tunnel lit up entirely by the victims, literally.

Access to the tunnel will be through “portals” from NYC, bringing the people directly to the tunnel, and back to NYC. In the tunnel, names of victims will be displayed on the side and facial recognition technology will be engaged to reveal their future appearance if they were still alive. This proposal is meant to heighten the world’s sense of empathy for the victims.

The proposed concept is also revivifying Hart Island with the perpetual and sustainable light powered by the respected victims. It gives the victims a chance of renewal through light, where each light beam represents their identity.