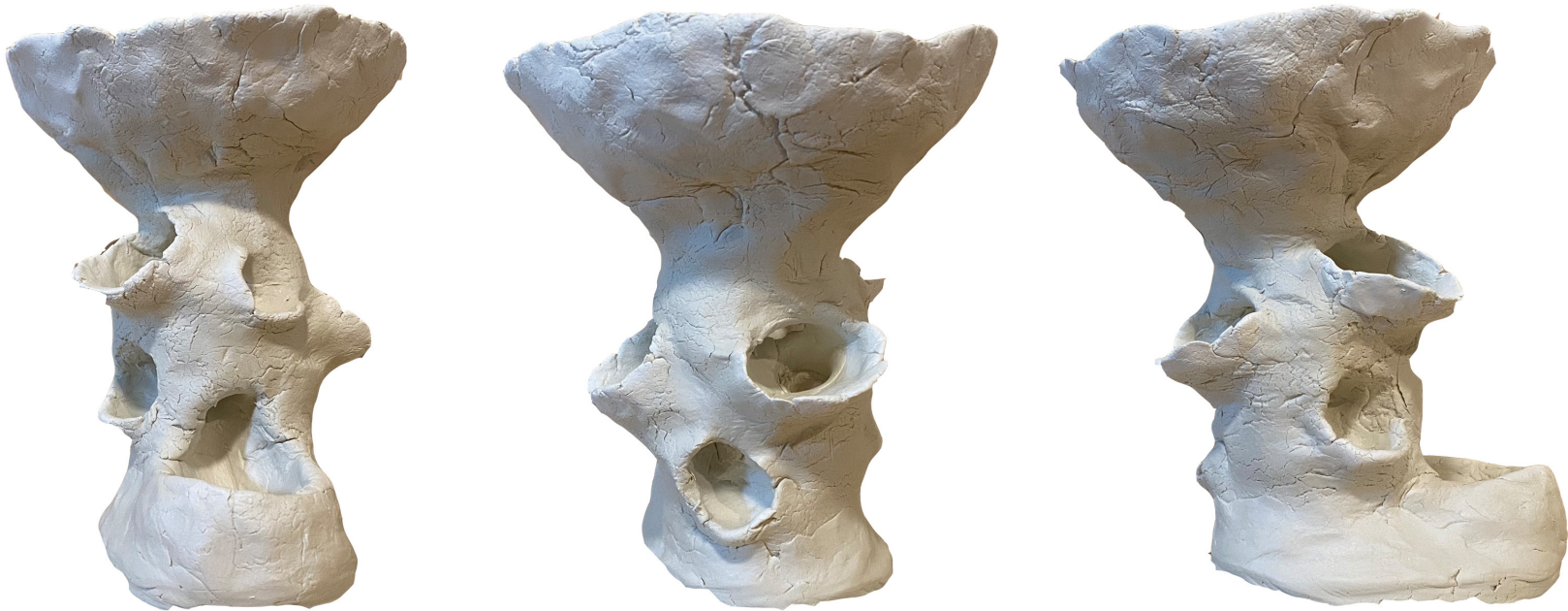


THE REVIVING POINT

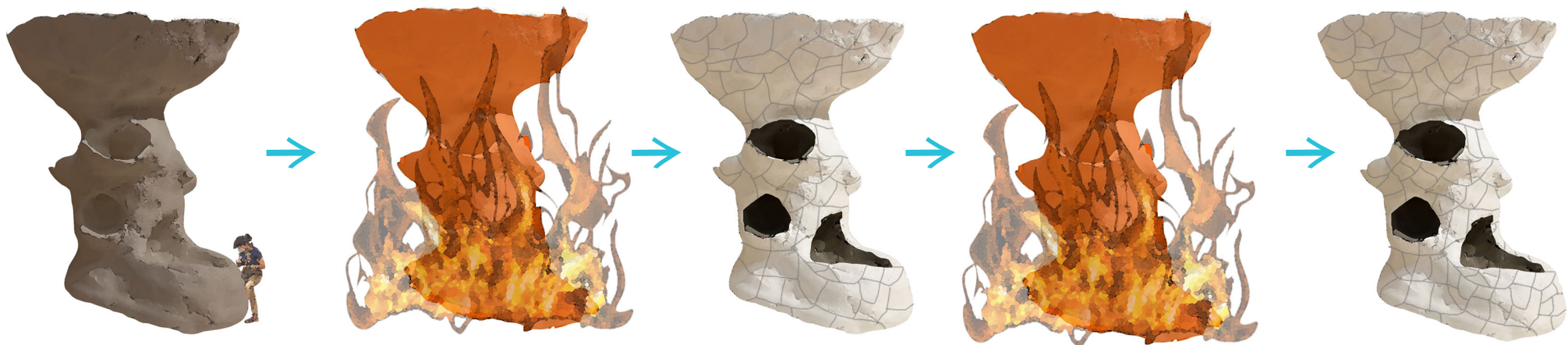
DESIGNED BY
LISUSHAN MENG



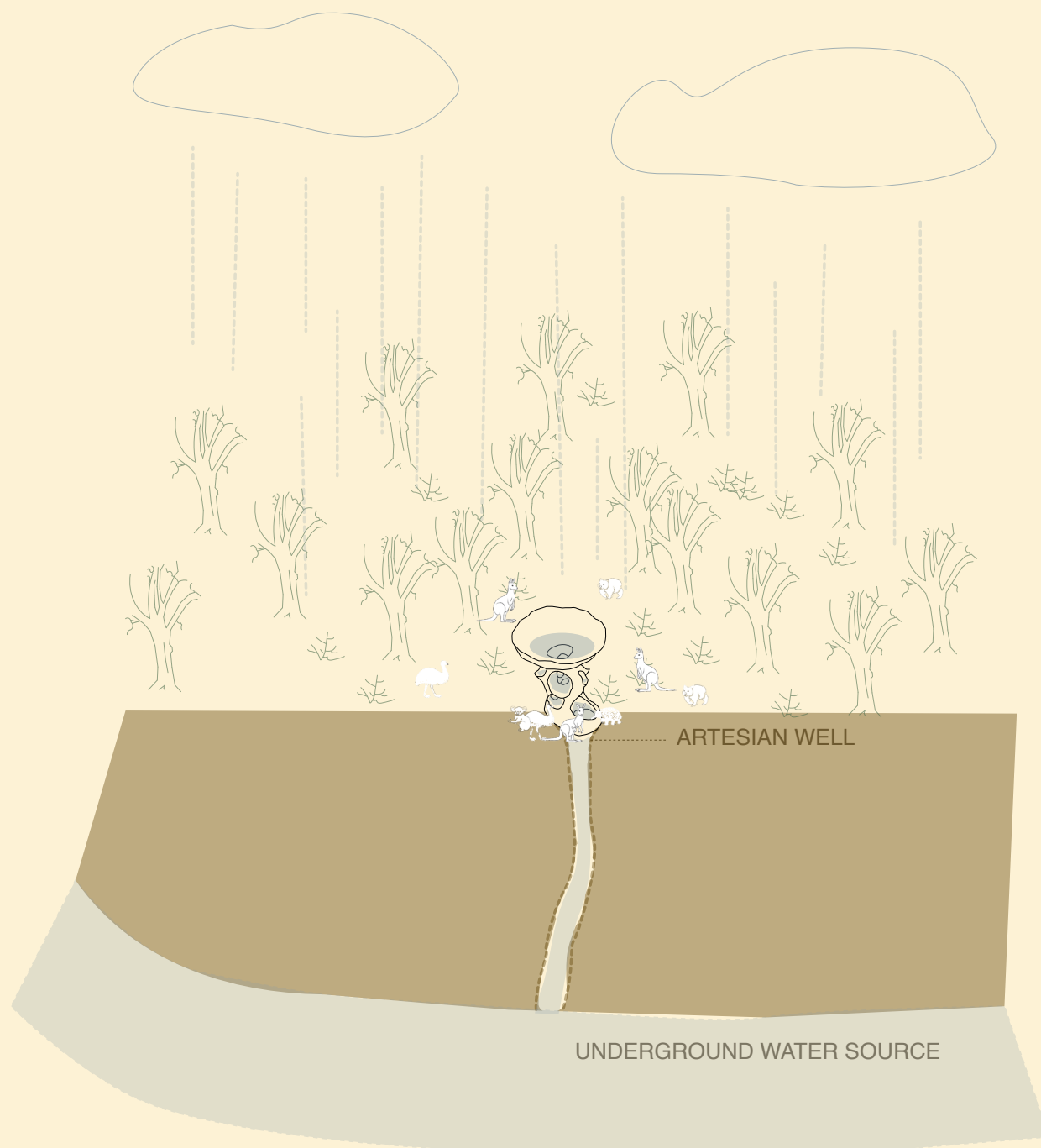
THE INITIAL CONCEPT INSPIRED BY THE WOMBAT 'HERO' DURING THE DROUGHT SEASON IN NSW



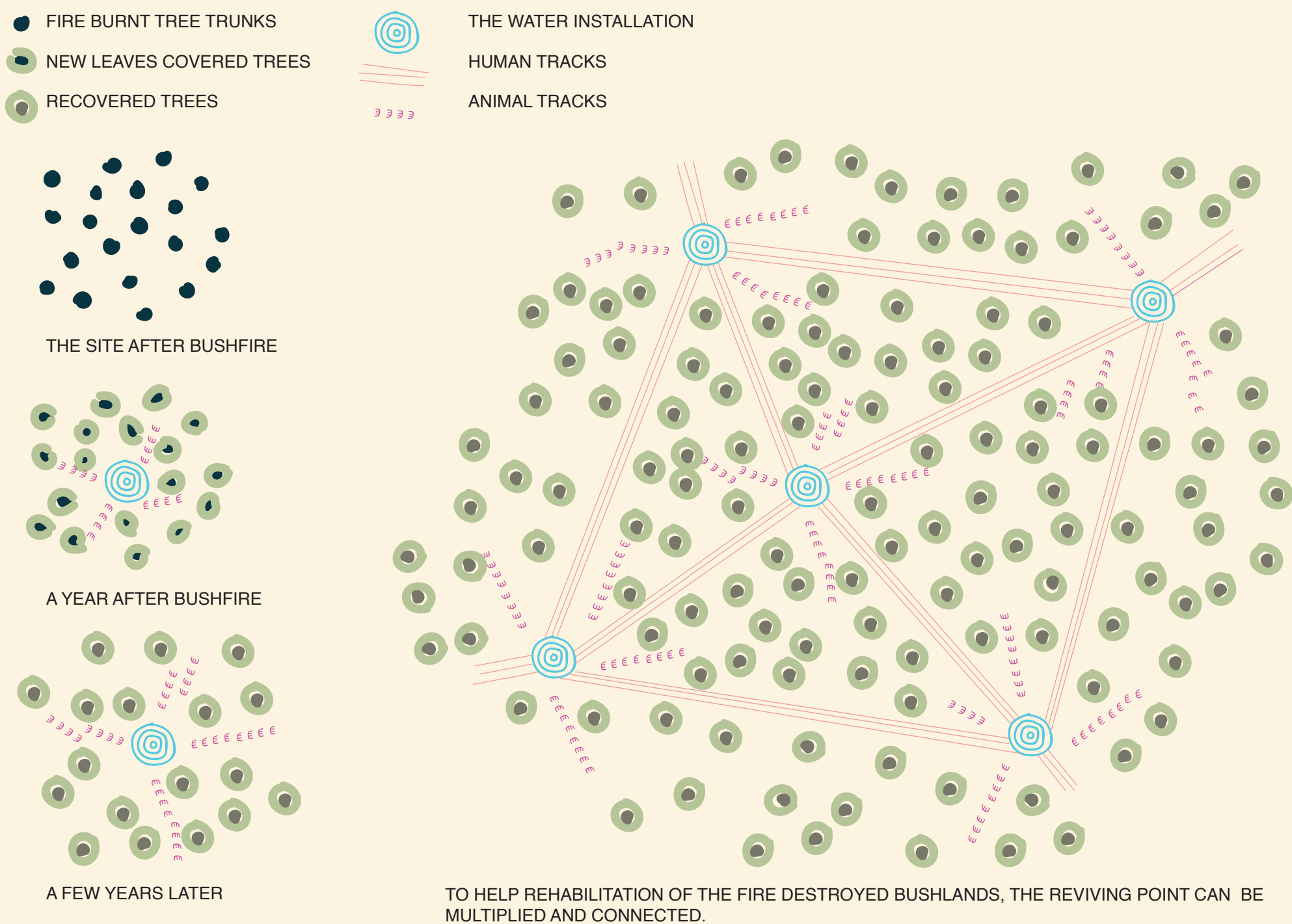
CLAY MODEL BASED ON THE INITIAL CONCEPT



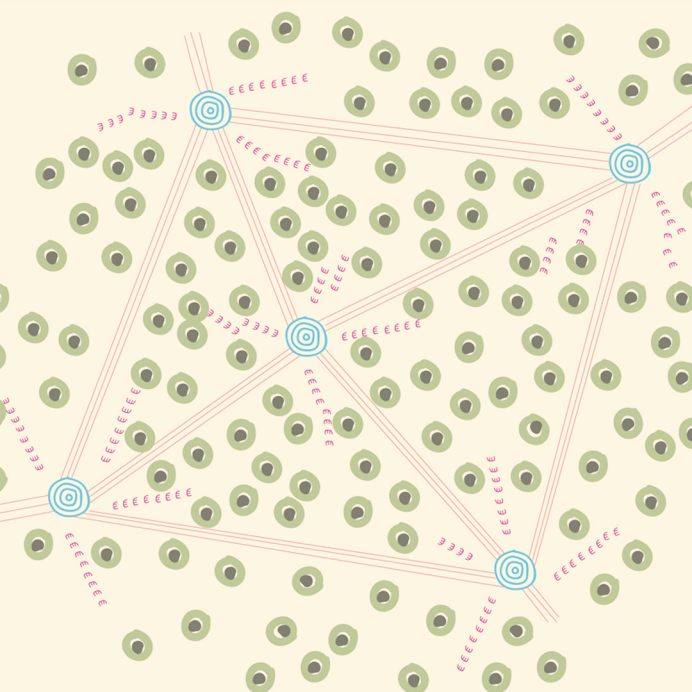
THE INSTALLATION IS MADE OF TERRACOTTA AND TREATED WITH A SPECIAL KIND OF GLAZING. THE GLAZING LAYER WILL CRACK DURING THE BURNING PROCESS; AND WHEN IT GETS BURNT AGAIN IN A LOWER TEMEPRTATURE THAN THE PREVIOUS TIME, MORE CRACKS WILL APPEAR.



THE INSTALLATION WILL COLLECT WATER DURING RAIN SEASON AND MAKE USE OF THE UNDERGROUND WATER IN DRY SEASON.







The Reviving Point

Designed by Lisushan Meng

The chosen site for this design proposal is the fire destroyed NSW bushlands. Though a year has passed since the start of the Black Summer Bushfire, when we think of it, the charcoal black forest, the devastated people who lost their homes and loved ones, the animals lost their habitats and lives are still very fresh in our memory. With this design proposal, I intended to offer hope for those people and animals who still live in terror and grief because of the bushfire. Meanwhile, the design is meant to remind everyone of us what has happened; so we would do what we can to avoid another disaster like this. The design proposal is an installation which collects rain water and connects to underground water source. Small animals and birds can drink from this water installation. The cracked skin and charcoal black holes of the installation reminds people of a tree trunk burnt by fire and survived. The water installation can be multiplied and connected in the bushlands, so a network of reviving points can be created, through which people can witness the resilience of nature and restore their hope for a better future.