



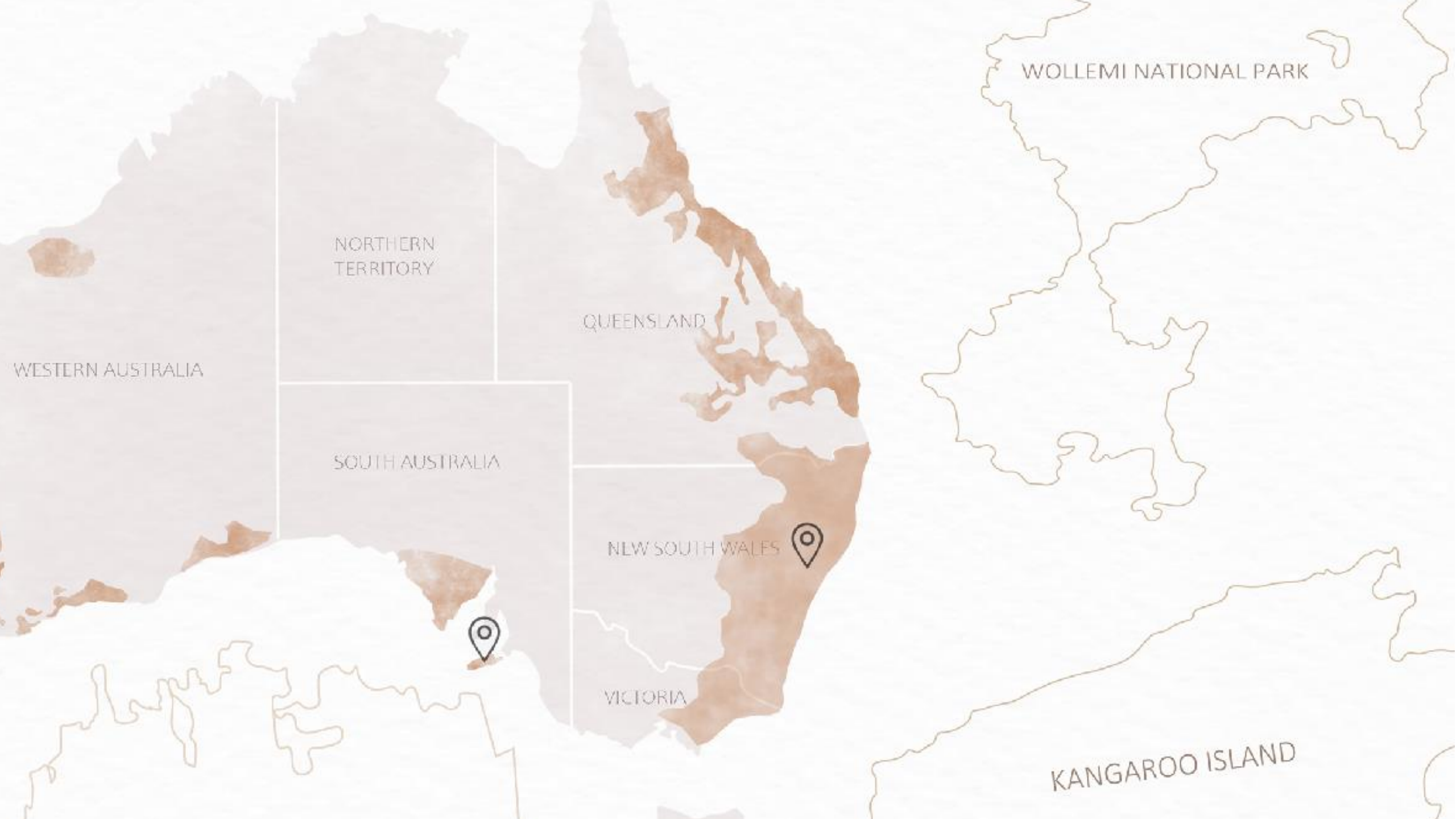
MORII

The desire to capture a moment....

Team Name : Y²

Yuzhen Xin &

Yuki Zhou



WOLLEMI NATIONAL PARK

NORTHERN
TERRITORY

QUEENSLAND

WESTERN AUSTRALIA

SOUTH AUSTRALIA

NEW SOUTH WALES

VICTORIA

KANGAROO ISLAND

BURNED BRANCHES



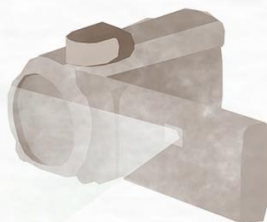
Using materials directly collected from the site as burned branches, overlapping and construct into the structure.

BURNED LEAVES



Burned leaves and fallen tree bark were collected to overlap. It will blend in the surrounding environment without disturbing.

PROJECTOR CAMERA



Camera used to capture the moment rebirth & regeneration of the nature beings

EUCALYPTUS SEEDS



Inspired by the shape of the seeds from Gum trees (Eucalyptus Seeds). Delivering the concept of REBIRTH & HOPE



STUMP



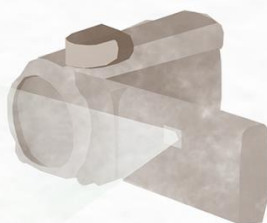
Find a stump in surrounding to support the whole structure

BURNED BRANCHES



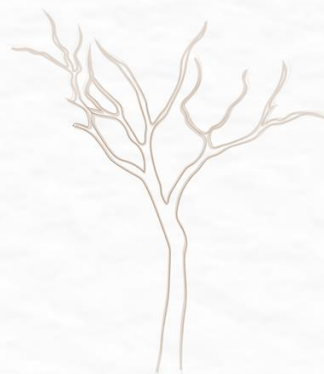
Using materials directly collected from the site as burned branches, overlapping and construct into the structure.

PROJECTOR CAMERA



Camera used to capture the moment rebirth & regeneration of the nature beings

BURNED TREES



Inspired by the shape of the burned trees from the bushfire. Delivering the concept of REBIRTH & HOPE





On the wall be forgotten; Burned land:
Puddle or river...



On the ground in the park; sidewalk;
vending machine...



On the large screen at the street corner;
train or bus; even people's phone...

