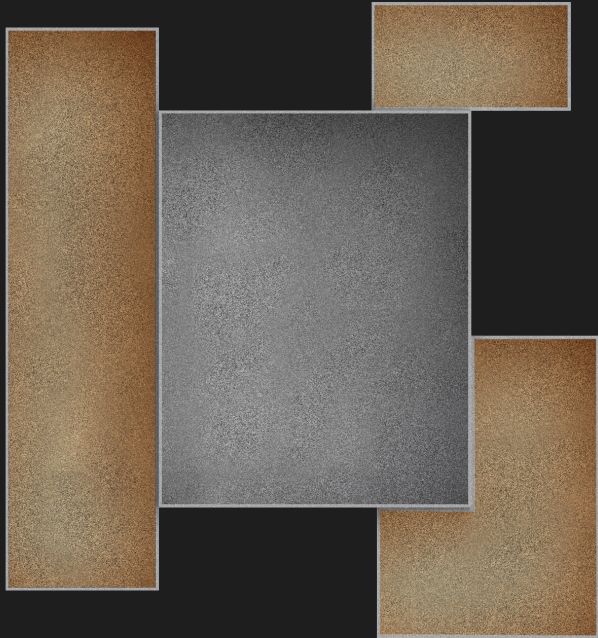
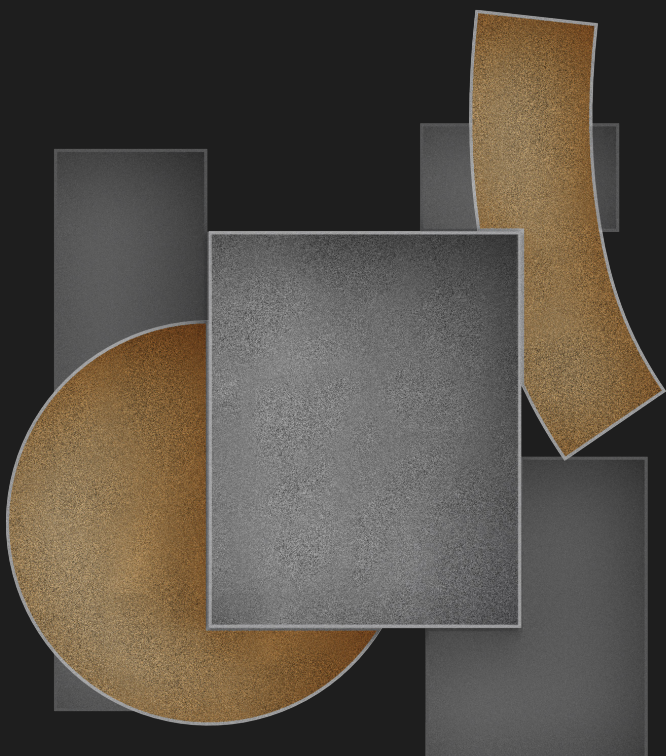


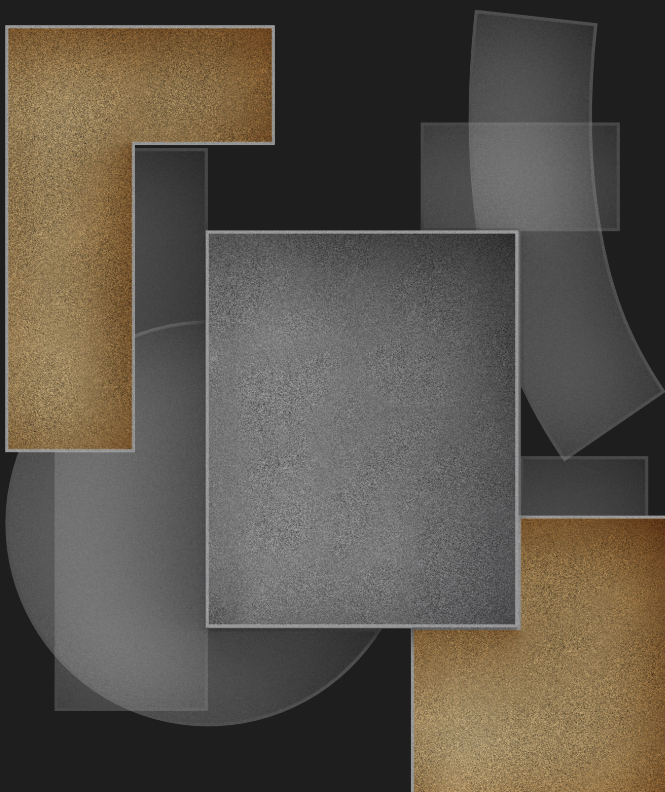
“what is allowed to ~~burn~~
be reborn”



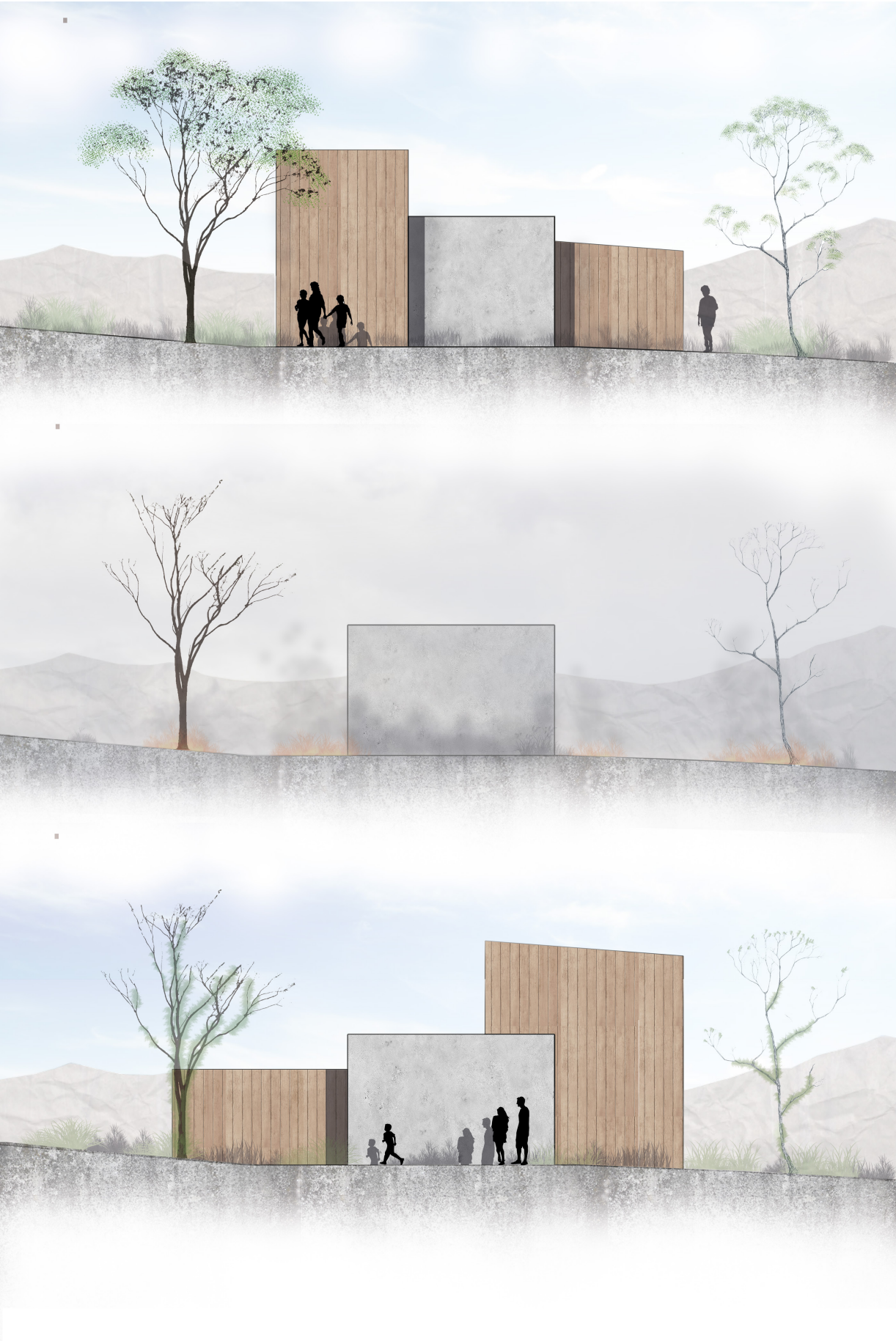
Evolving Identity is constantly changing over the course of a given subjects life. From the individual to the community, we are constantly changing. We propose a relationship between what we consider our evolving identity as an individual and as a community, and the constants that are shared between all cultures and diversities.



Our project supports the evolving identities of communities by allowing certain aspects of the way we live to burn and be reborn into what the emerging lives need whilst maintaining and supporting the constants that reinforce Australia’s diverse nascent identity and promote equity between all peoples.

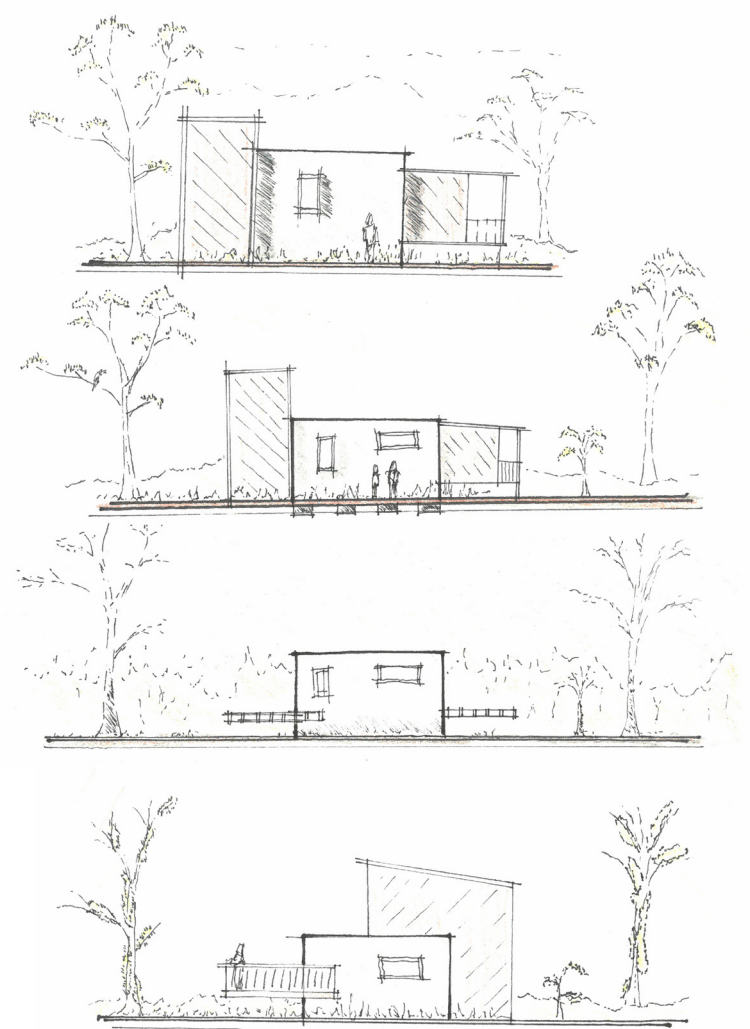


Through this process of burning and redevelopment a palimpsest of cultures not only literally but metaphysically and historically begin to grow and emerge, whilst maintaining a pluralistic community through preserving the core which embodies aspects of living and storytelling which are constants across all cultures.



Additionally, the charcoal from the burnt structure would be used to fertilise the landscape surrounding the core. Ash would be used to produce ash-concrete composites which can be used to build more cores for a growing community.

Our concept supports the Australian landscape by promoting cool burning practices which allow for specific native plants to grow. This also has strong ties to indigenous burning and land management practices which would be incorporated into the community's way of life through our concept whilst maintaining the pluralistic community through the cultural constants of storytelling and living. This practise of burning then becomes a part of the constants on a larger communal scale.





Cool Burning from aerial view



Before and after an fire



Cool Burning from persons perspective



Regrowth

The fundamental idea behind our concept of supporting the relationship between our evolving identity and the constants across cultures through burning practices also scales to the greater community and beyond.

As we increase our perspective of the concept we can see several structures that embody our concept in unison, we can see that the evolving identity of a community becomes the space in-between the cores and that this notion of evolving identity and burning begins to connect to the surrounding landscape.

