



## SEDIMENTARY FABRICS

Group 510 | Angela Xu | Thomas Li

### PROGRAMME: CLOTHING EXCHANGE

*Celebrating the Identity connected to Migrant Cultures*  
through *Ritual*

The clothes we wear are more than just pieces of fabric for keeping warm. They mould to our bodies, like skin, shaping our personal identity. It changes the world's view of us and in turn our view of the world.

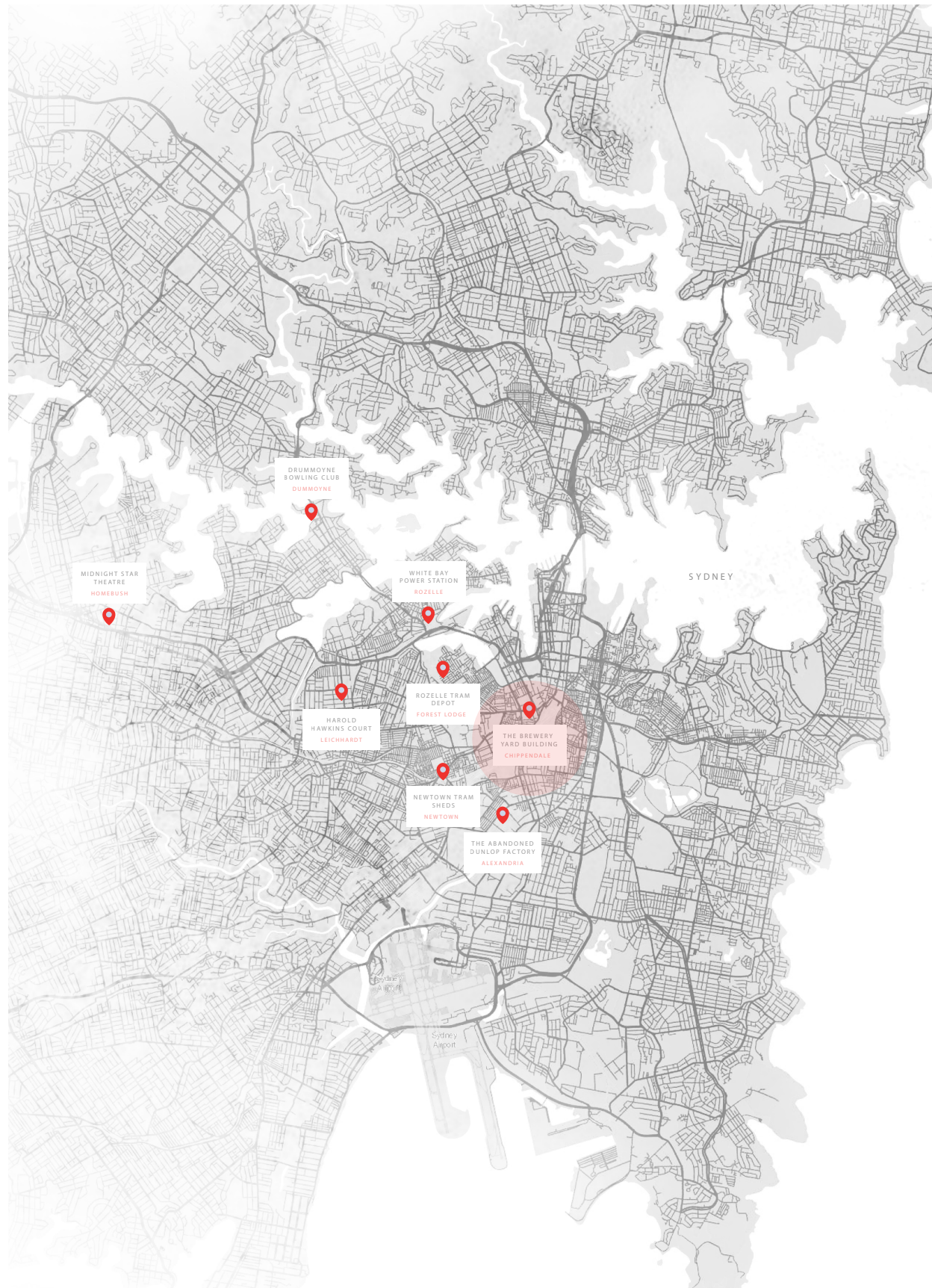
What we propose unites past and present, to invite a future that celebrates the fluidity of identity. The sites we have chosen are abandoned industrial spaces across Sydney, that have not only become a neglect of land, but also our heritage and cultural identity.

Our design blends architecture with sculpture, inviting the local community to bring a part of themselves, their clothes, to partake in an act of collaboration and sharing.

We provide a tectonic frame, formed by systems of cables that occupy the husks of these existing buildings. The cables allow for the garments to be hooked on or released by visitors. Over time, the space bends and sags according to the collective input from the community.

It becomes a process of giving and accepting, an anonymity that opens a conversation across existing racial divides. The celebration here lies not with your own culture, but through the acceptance and welcoming of another. Clothes can be expressive yet nameless, they gather to form a collage that blurs the barriers of societal categorisation. Exalting the essence of the self.

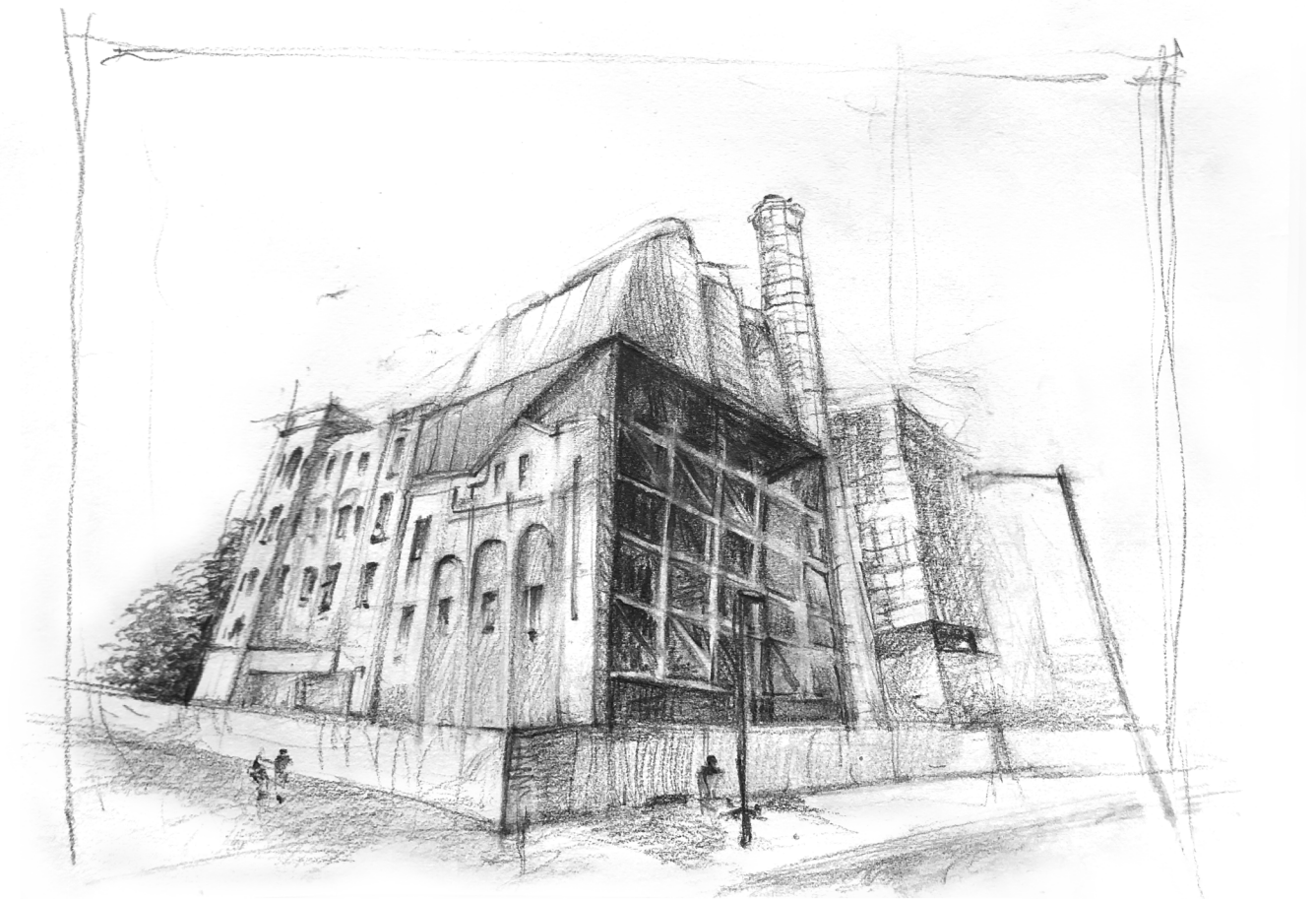




## SITE

These skeletons of 19th century industry lie in fear of the gentrifying machine of modern economic progress. Our goal is to revitalise these spaces that have become detached from society by installing a prosthetic architecture that returns these buildings to public consciousness.

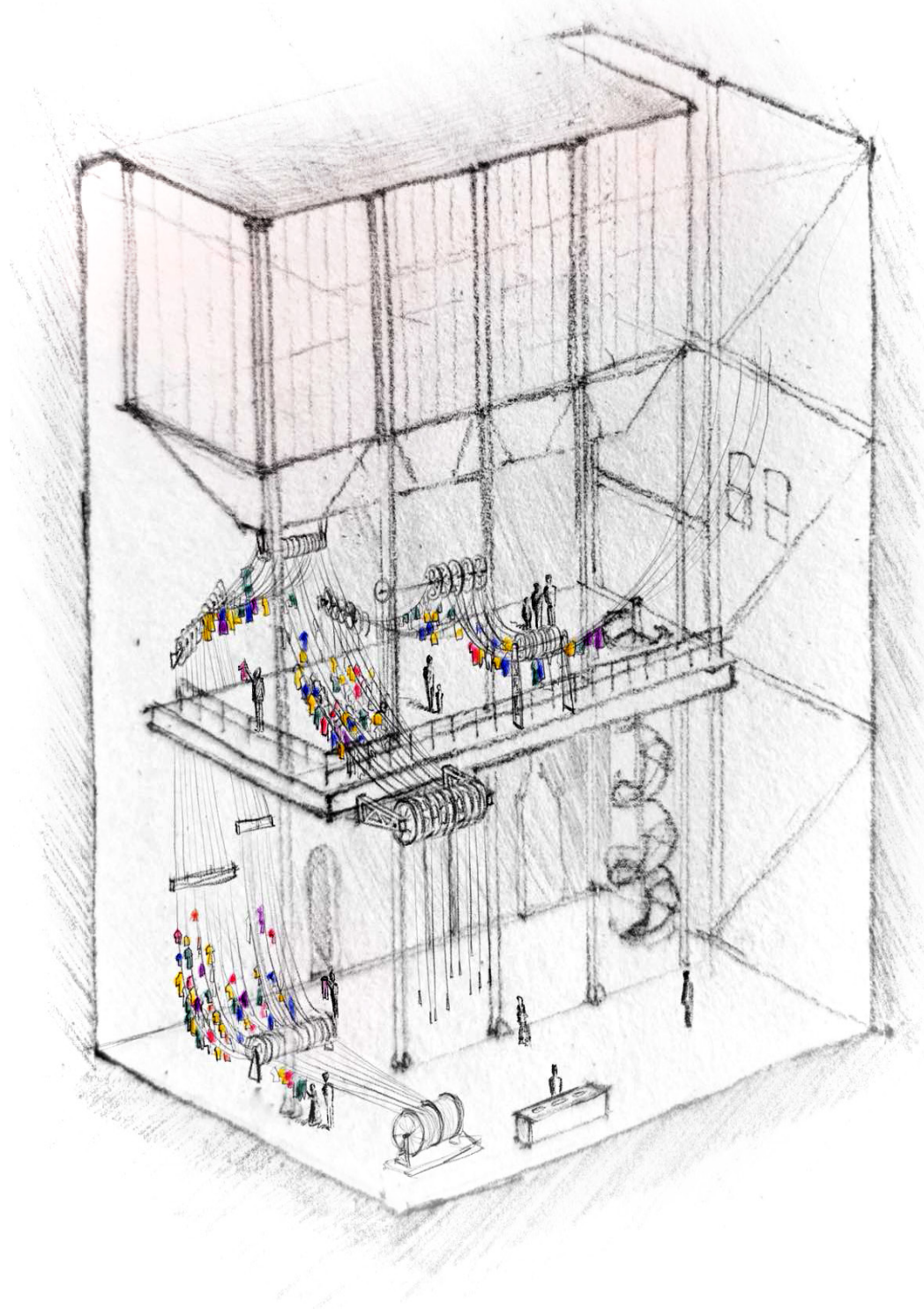
We explore this concept in more detail in the Brewery Yard Building located in Chippendale, NSW.



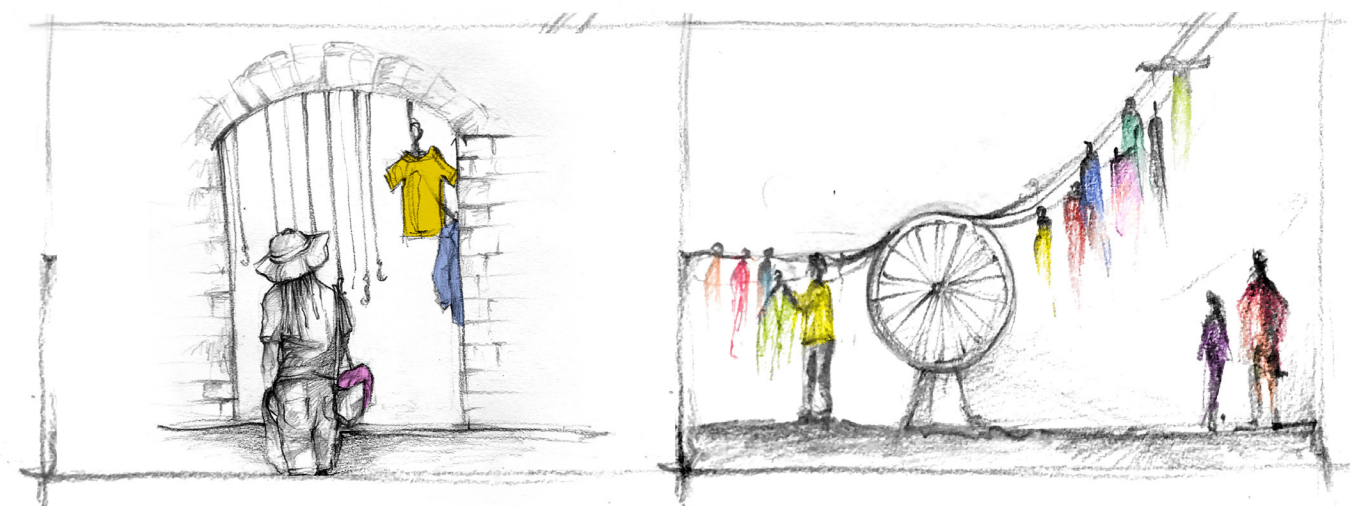
SITE 1 - The Brewery Yard Building, Chippendale, NSW



THE BREWERY YARD BUILDING, CHIPPENDALE, NSW



Axonometric - Clothing Exchange Hall

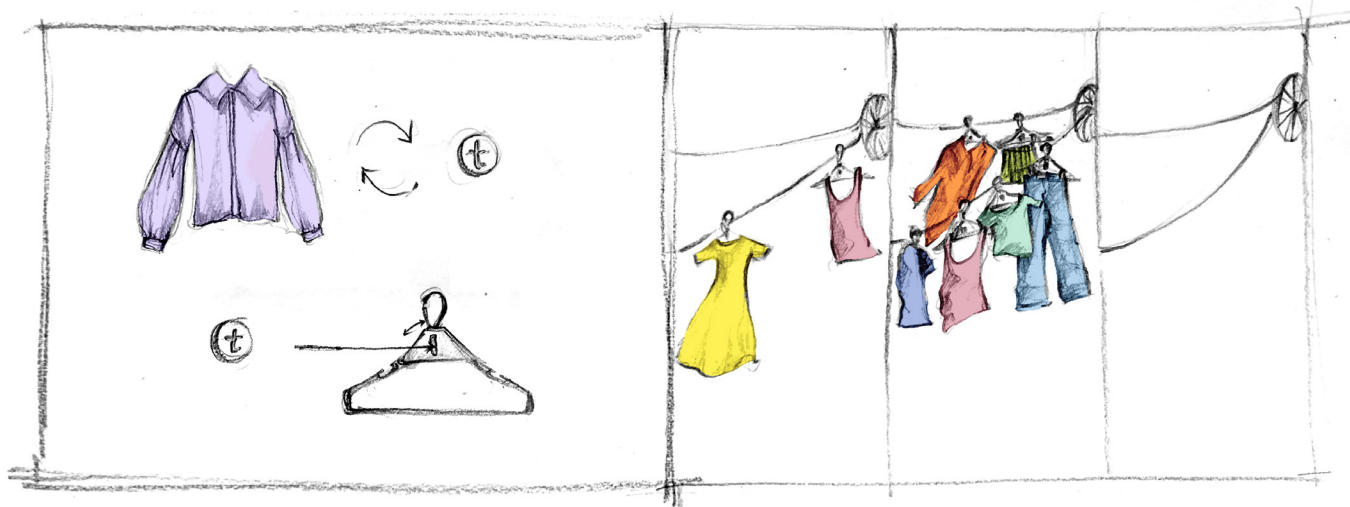


ENTRANCE

Visitors are invited to donate one or more items of clothing to enter the building

THE EXPERIENCE

Wondering under the canopies of suspended garments. One finds an empty hook to deposit their unwanted clothes. The weight shifts the balance and composition and recomposes the space. These pulleys can be operated to browse the selection.



THE PROCESS

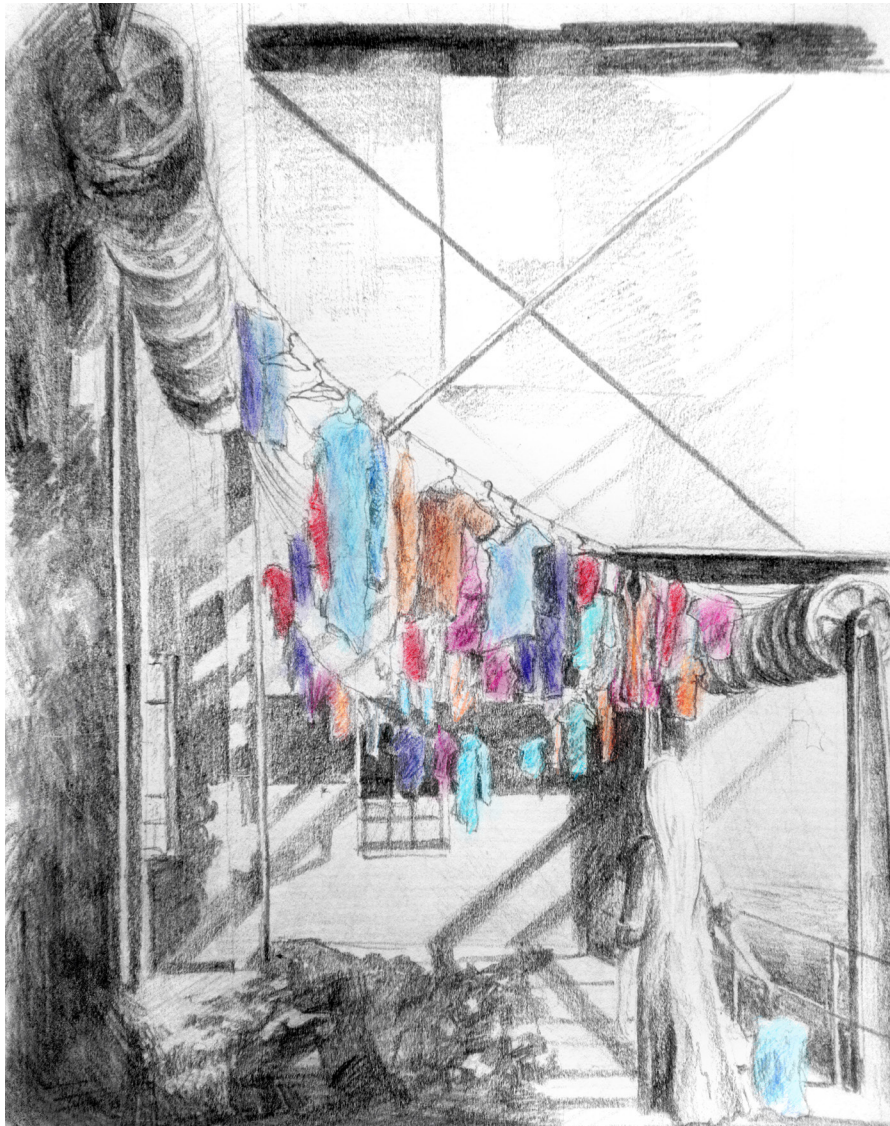
With every visitation, you receive one token with the condition you bring one or more garments. This token can be inserted to unlock any clotheshanger on existing displayed items.

ANNUAL RITUAL

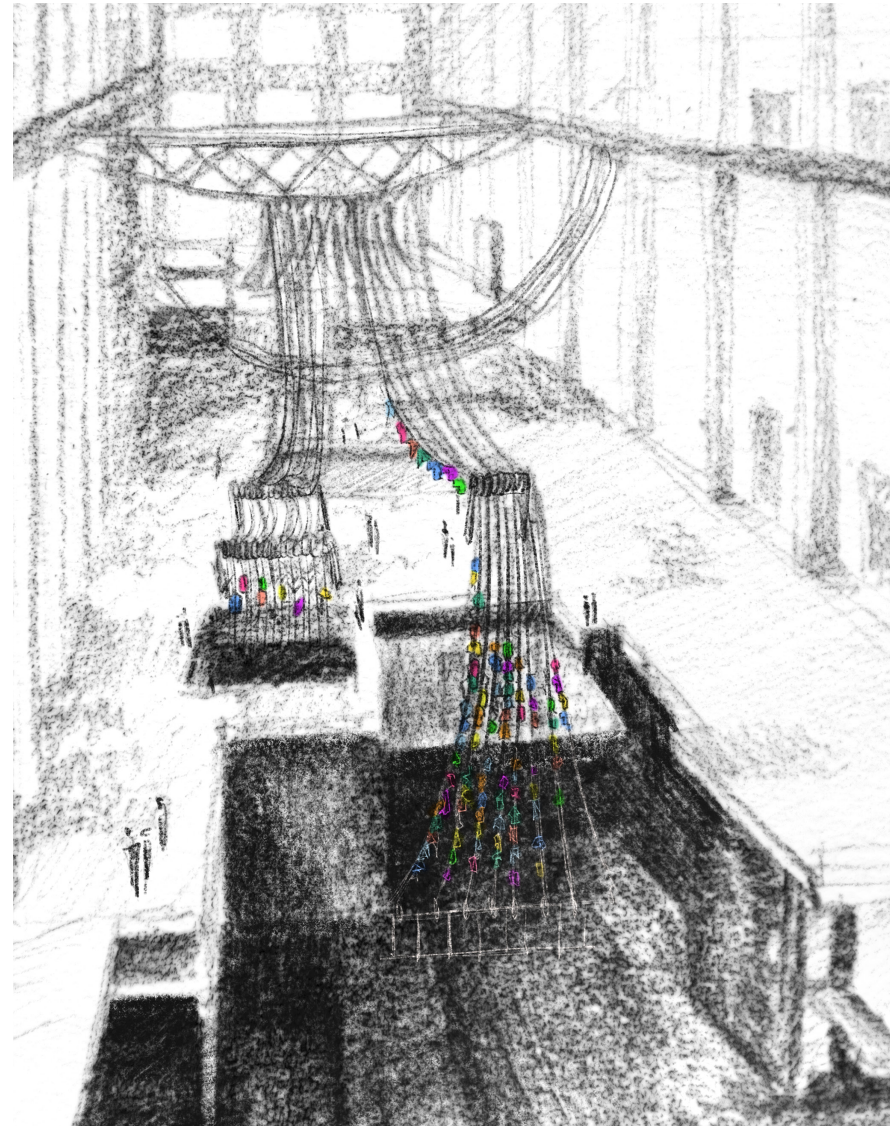
At the end of each year, as the space fills up, the remaining clothing is cleared and donated to charity and ritual of exchange begins anew.



EXPANDED IMPLEMENTATION



SITE 1 - The Brewery Yard Building, Chippendale, NSW



SITE 2 - White Bay Power Station, Rozelle, NSW



SITE 3 - Rozelle Tram Depot, Forest Lodge, NSW