

Values

**Country** assists in defining the identity and culture of who Aboriginal and Torres Strait Islanders are, whilst also providing a physical record for the history of their people. Country tethers the knowledge of previous generations with current and future generations, and as a result, requires unreserved respect and care by those who live upon it.

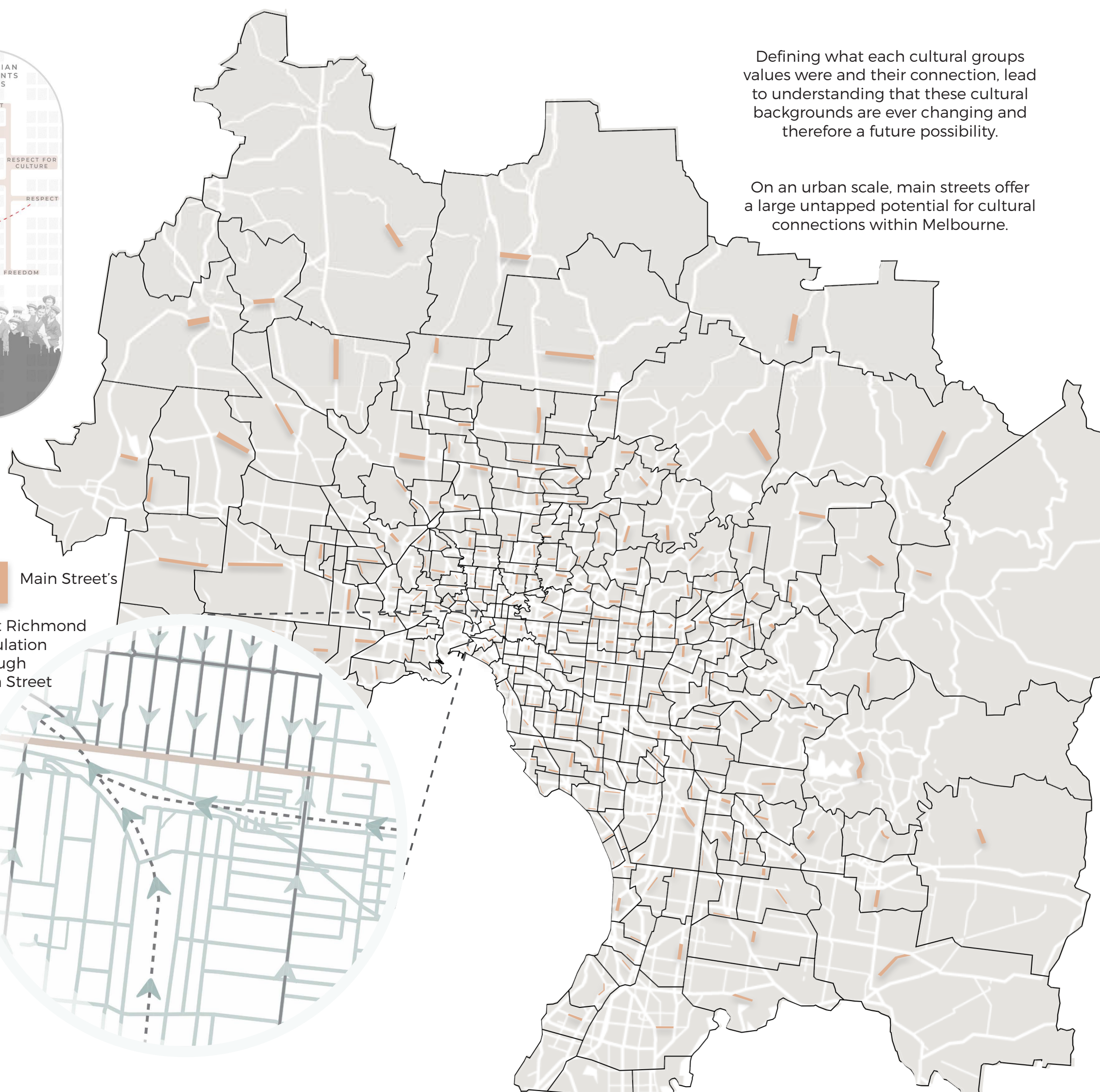
 Main Street's

West Richmond  
Circulation  
through  
Main Street



Defining what each cultural groups values were and their connection, lead to understanding that these cultural backgrounds are ever changing and therefore a future possibility.

On an urban scale, main streets offer a large untapped potential for cultural connections within Melbourne.







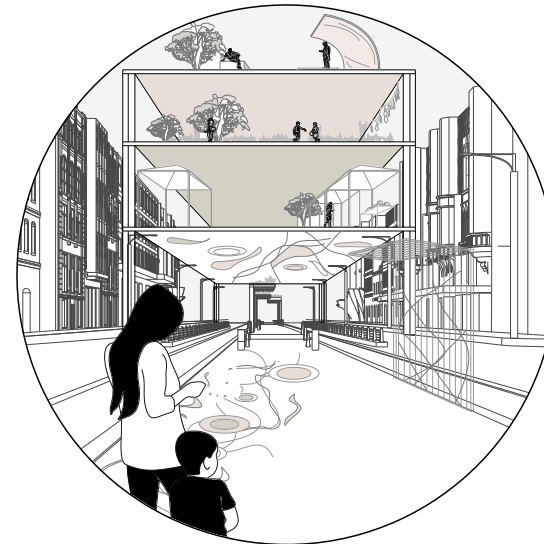
Through analyzing West Richmond as an example of a main street within a Melbourne suburb which needs cultural activation.

This suburb shows the conflict between locals from Colonial and Vietnamese cultural backgrounds and the Contemporary cities ideas.

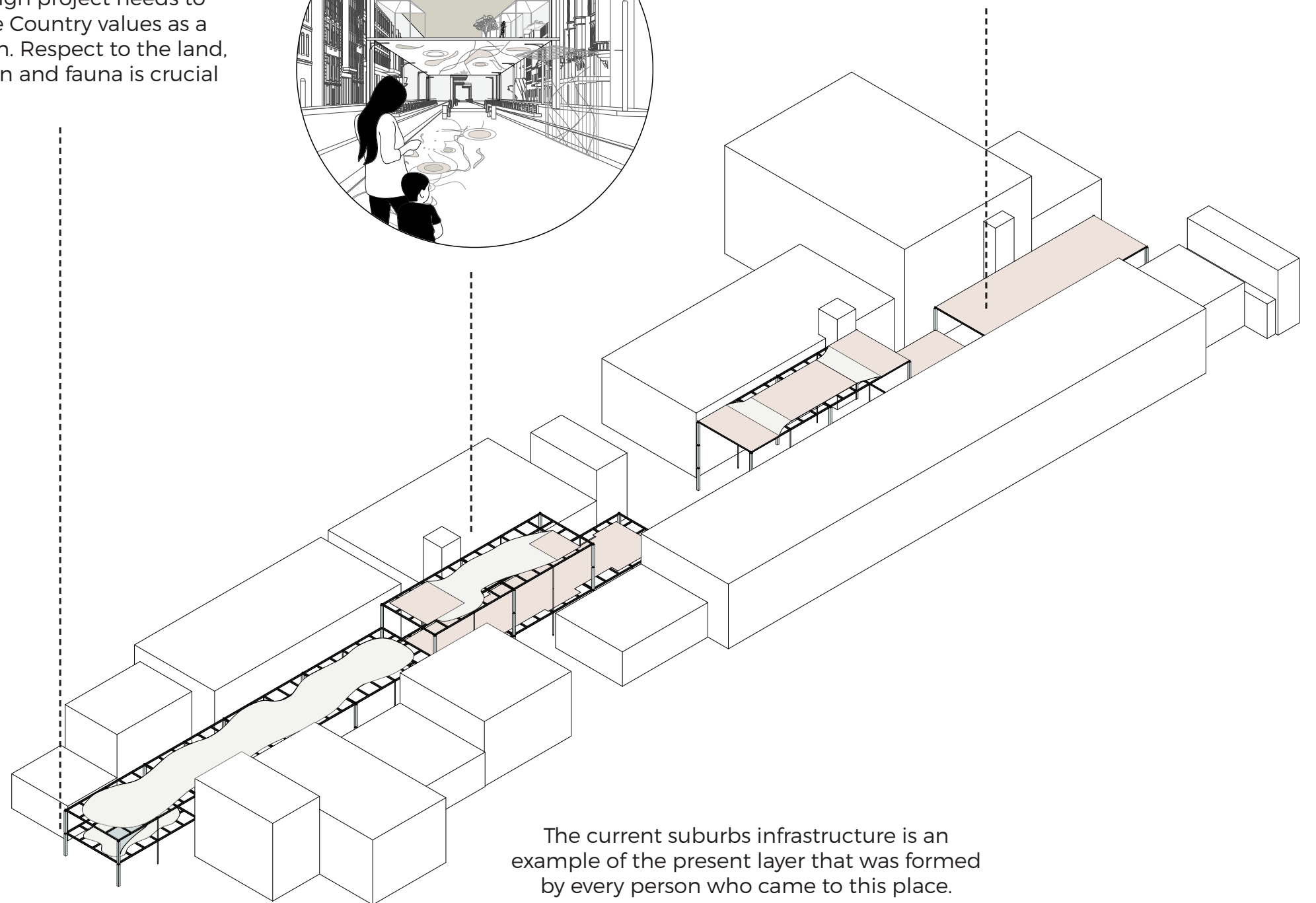
Because of the lost of Indigenous and Country values through time, all the new cultures arriving were not able to truly work and engage with each other, leading to conflicts that this area is facing today.



Any design project needs to have the Country values as a foundation. Respect to the land, vegetation and fauna is crucial



Identity of a place is always evolving, every new person gives a new 'breath' to a location. It is important to secure the unique qualities of cultures and identities and create a safe and positive environment for locals



The current suburbs infrastructure is an example of the present layer that was formed by every person who came to this place.



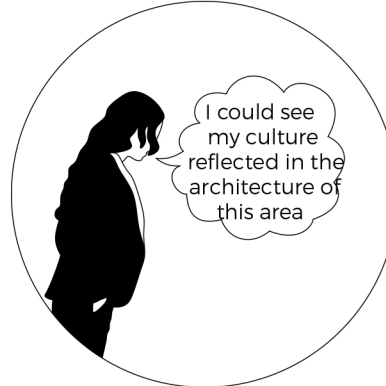
Do you see your Culture reflected in any form in West Richmond?



Immigrant Identity, 38



Immigrant Identity, 29



Colonial Identity, 52



Colonial Identity, 14

Values of Country

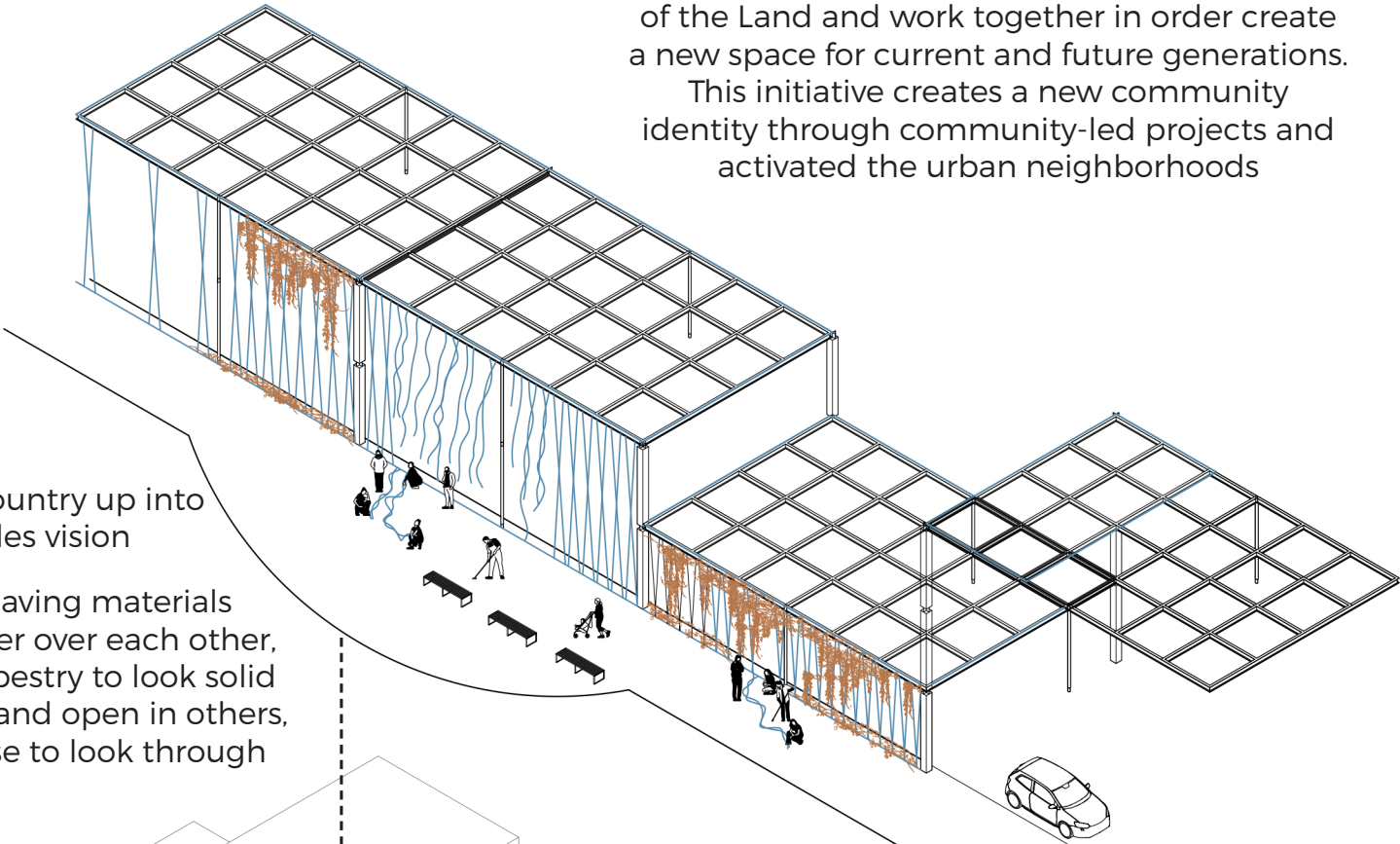
Knowledge  
Community

Respect  
Law of Land

Celebration  
Obligation

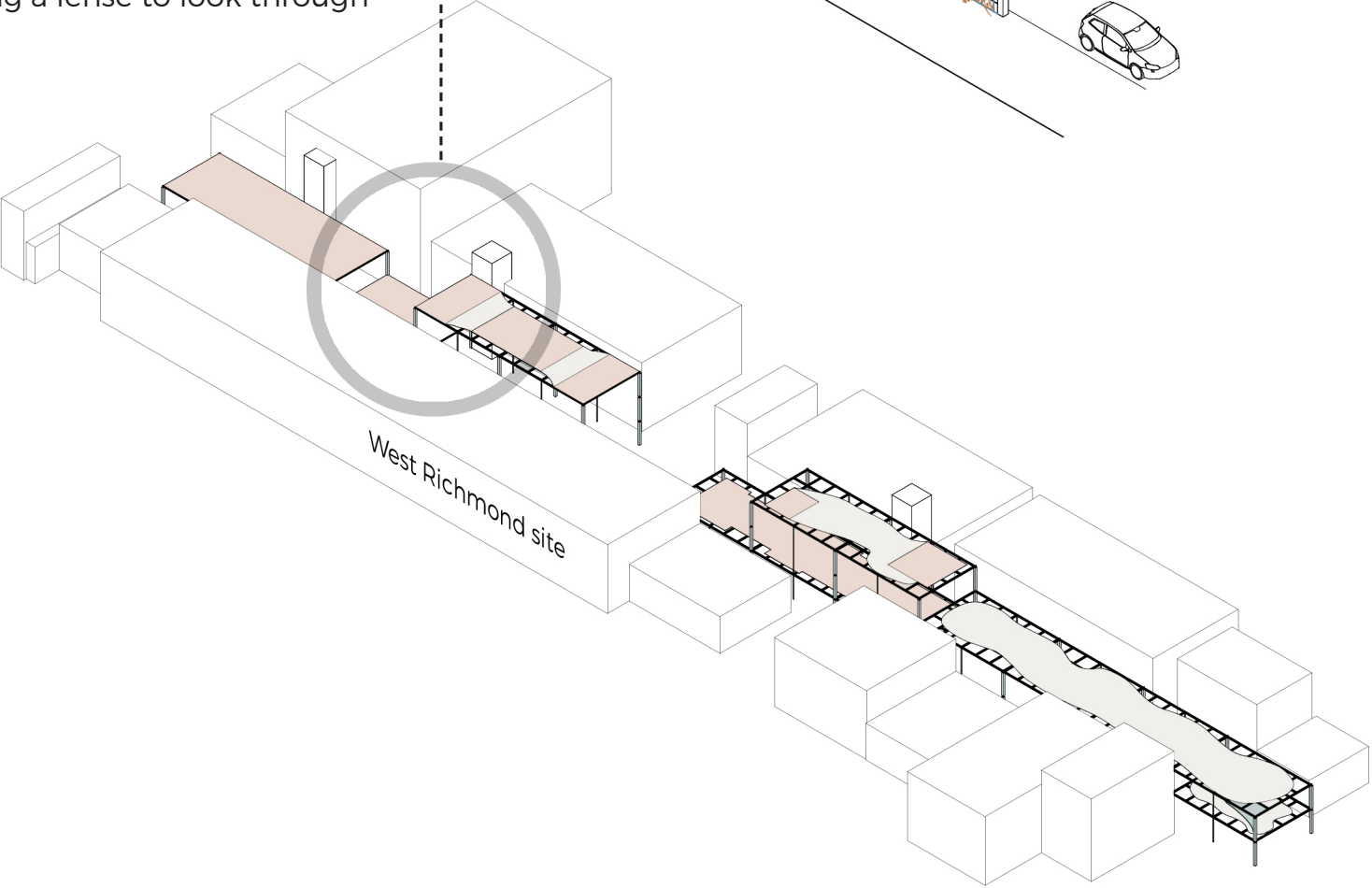
One With Nature

Community learns from Traditional Custodians of the Land and work together in order create a new space for current and future generations. This initiative creates a new community identity through community-led projects and activated the urban neighborhoods



Raising country up into peoples vision

Different weaving materials combine to layer over each other, forming the tapestry to look solid in some places and open in others, creating a lense to look through

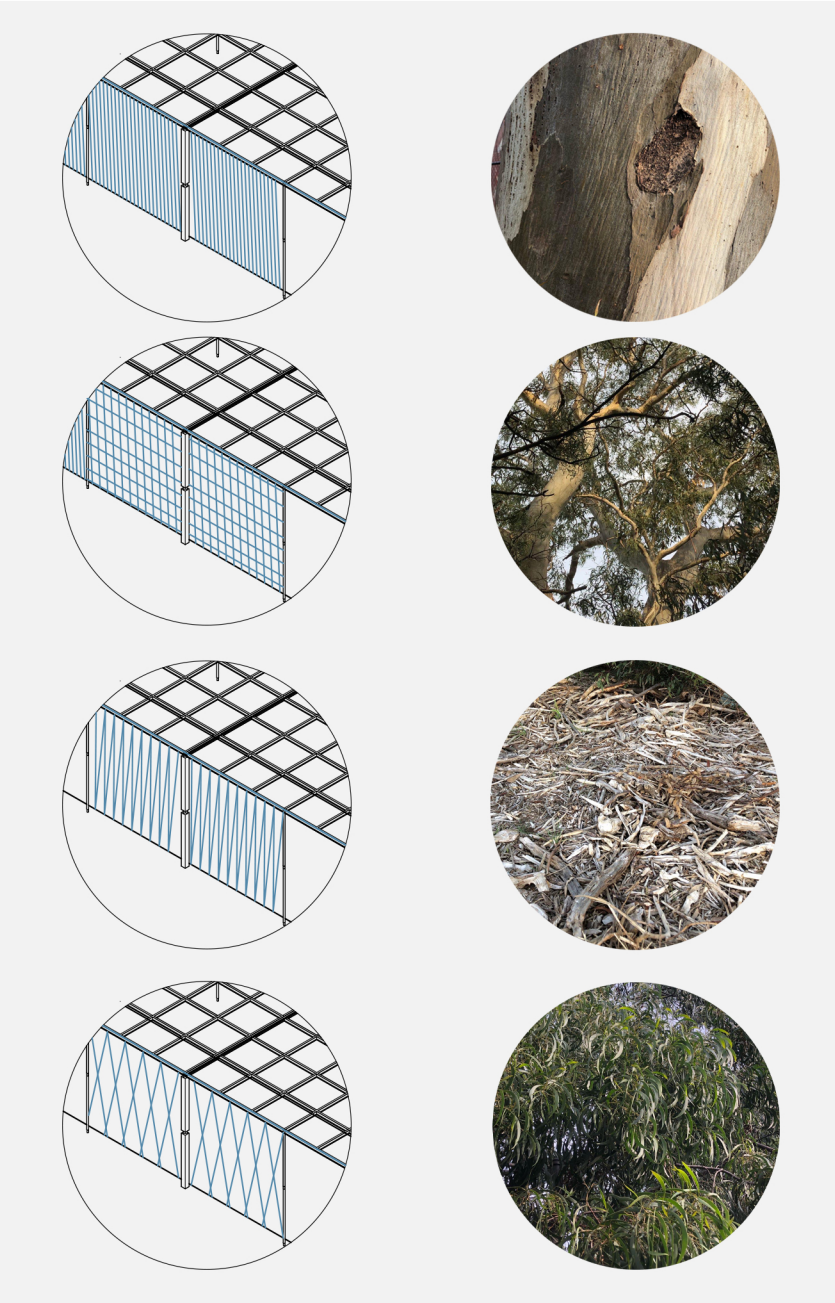


West Richmond site



Weaving indigenous materials into a lattice structure whereby those who walk buy look through country

A connection to Country is maintained through natural materials that once existed on this land







The future of Melbourne if allowing the a culture of stagnation and suspicion of other cultures continues.

This is the potential future of Melbourne if cultural stagnation, suspicion, and misunderstanding continues. Communities will be gradually more and more disconnected communities will gradually become more and more disconnected. The future where the values of the Traditional Custodians of the land where not respected and lost. This inevitably leads to the lost or irrevocable damage of all Melbournes immigrant cultures



The proposed future of Melbourne through activation of main streets to bring about cultural empowerment.

This is the beautiful future that Melbourne could have, if we bridge the gaps that have begun to form between cultures and communities, practice understanding and learn from the values of others. We will see interactions and communication, as well as innovations that act as the foundation of for the better future