

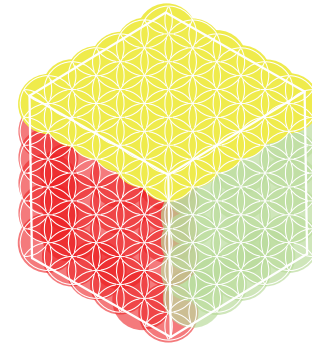
## EVOLUTION OF IDENTITY



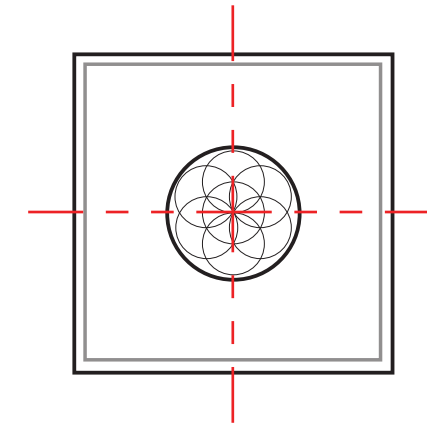
A fragment of identity



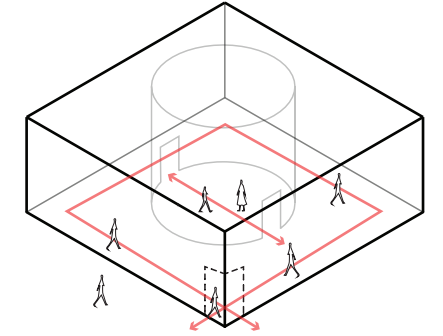
Assembled fragments/  
An individual's identity



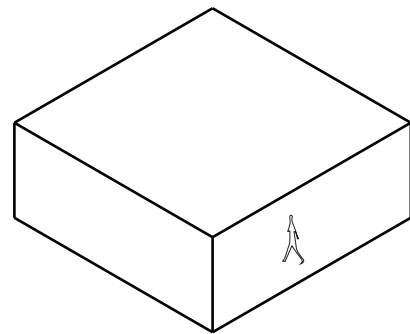
Mosaic/  
Collective identity



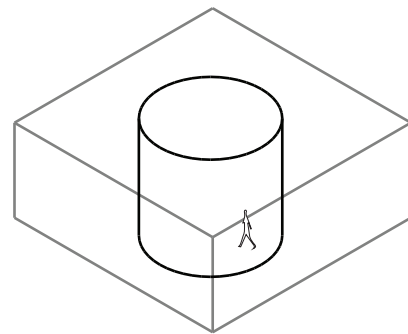
PARTI  
Circle + Square  
Translated from the mosaic  
narrative



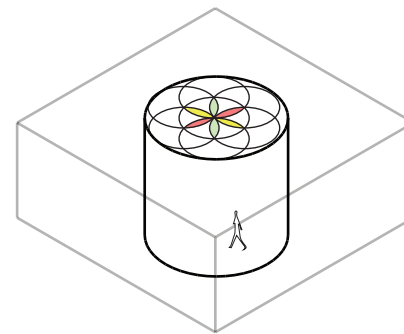
CIRCULATION  
Flexible, accessible movement  
within block and circle



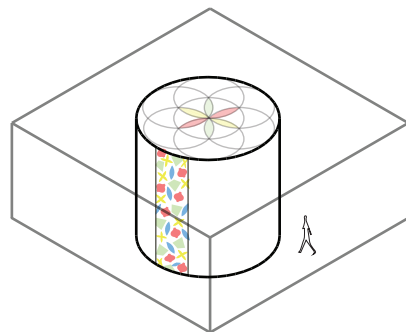
Generic Block  
(Simplified Collective Identity)



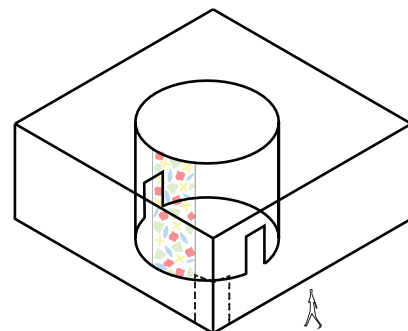
Inner Circle  
(A fragment of identity)



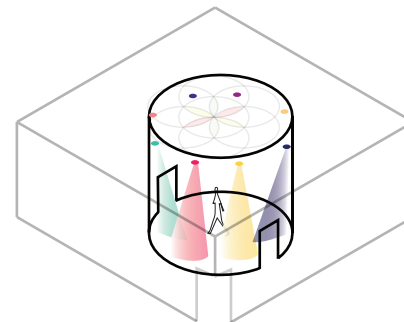
Skylight with colourful stained  
glass mosaic  
(Assembled identity fragments)



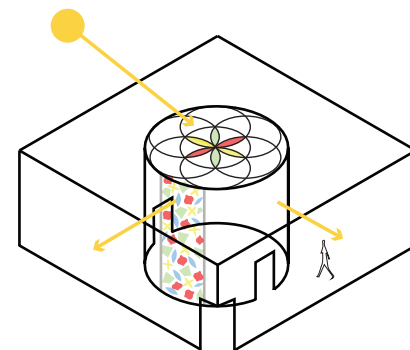
Mosaic slit openings from Malaysia's  
cultural symbols  
(Representing Malaysian Culture)



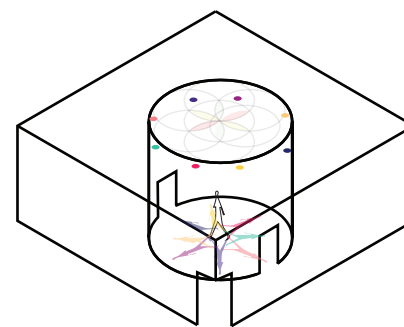
Carve out corner entrance and  
thoroughfare to the inner circle  
(Flexible Circulation)



Colorful LED Spotlights  
(Interactive, Social Cohesion)



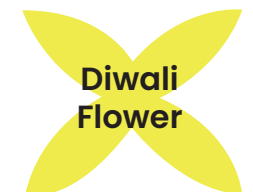
Moving sun path creates various  
dynamics of color reflection  
(Evolution of Identity)



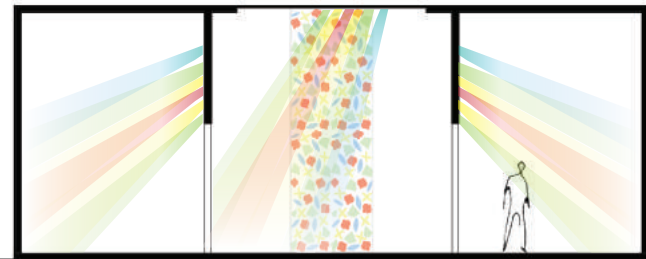
Interactive light and colorful  
shadow play during the night  
(Reflection & Harmony)



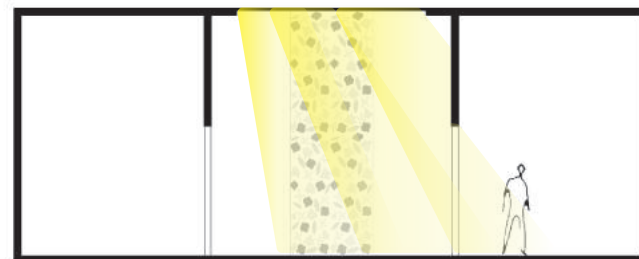
MALAYSIA'S MULTICULTURAL SYMBOLS



MOSAIC PAVILION



Coloured mosaic pieces on skylight and inner walls refract light to the internal spaces



Natural light basks the pavilion with light through the skylight. Different sun angles create different refraction of light, transforming the space throughout the day

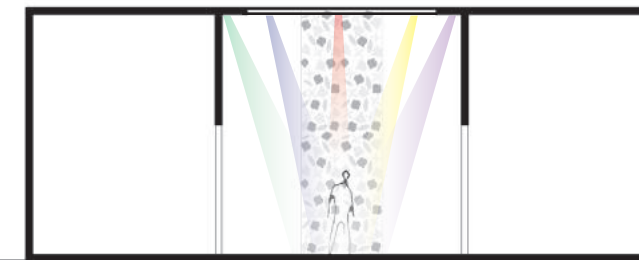
Dim

Bright

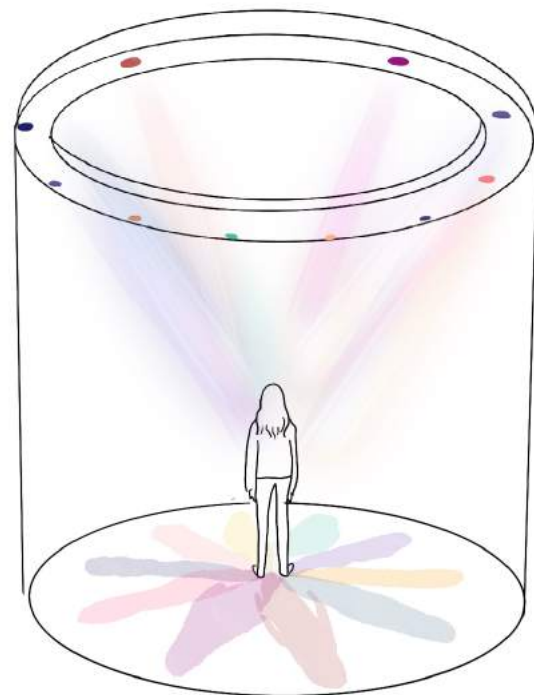
Dim



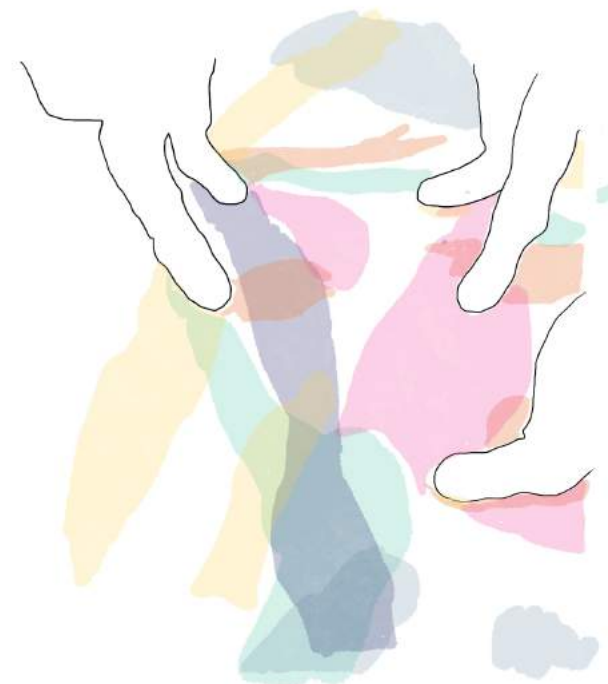
Transition from Dim (Outer) to Bright (Inner)  
The only bright space creates an attraction  
Disperse the cultural symbol mosaic to the exterior



Coloured LED Spotlights around the skylight creates an interactive play of light and shadow during the night



As an individual steps in, the spotlights create multiple coloured shadows showing the multitude aspects of an identity



Overlapping shadows created as people walk into the circle. Represents harmony and create interactions that promote social cohesion

Skylight  
*Assembled identity*

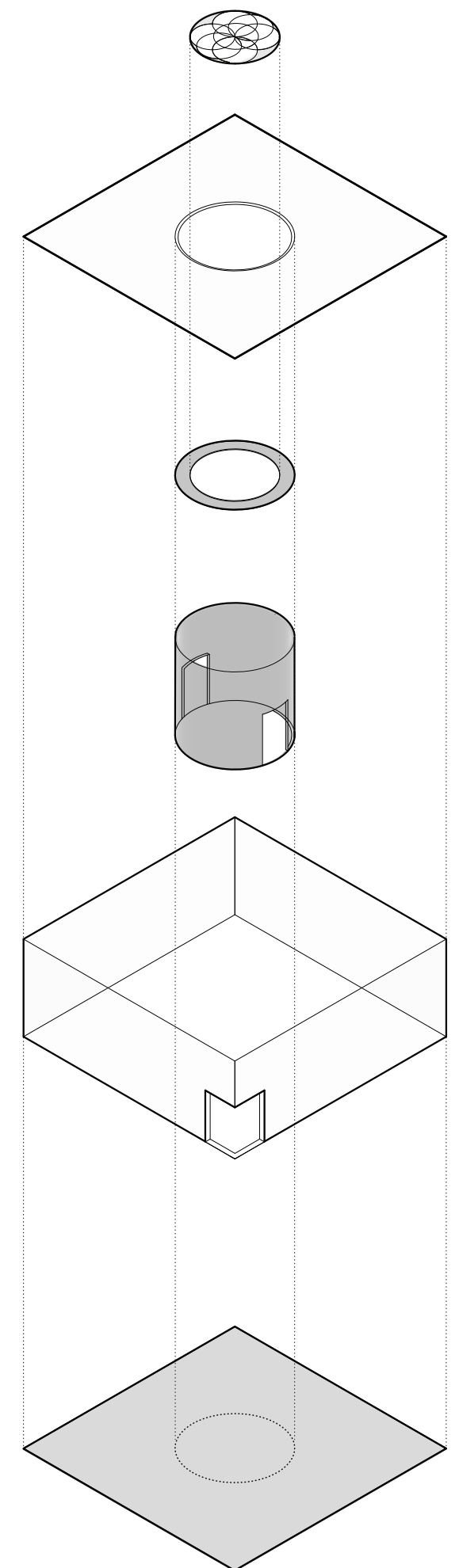
Roof

Coloured LED Spotlight  
*Interactive*

Inner Circle  
*Fragment of identity*

Outside Box  
*Simplified collective identity*

**Mosaic Pavilion**  
Exploded Isometric





## MOSAIC PAVILION

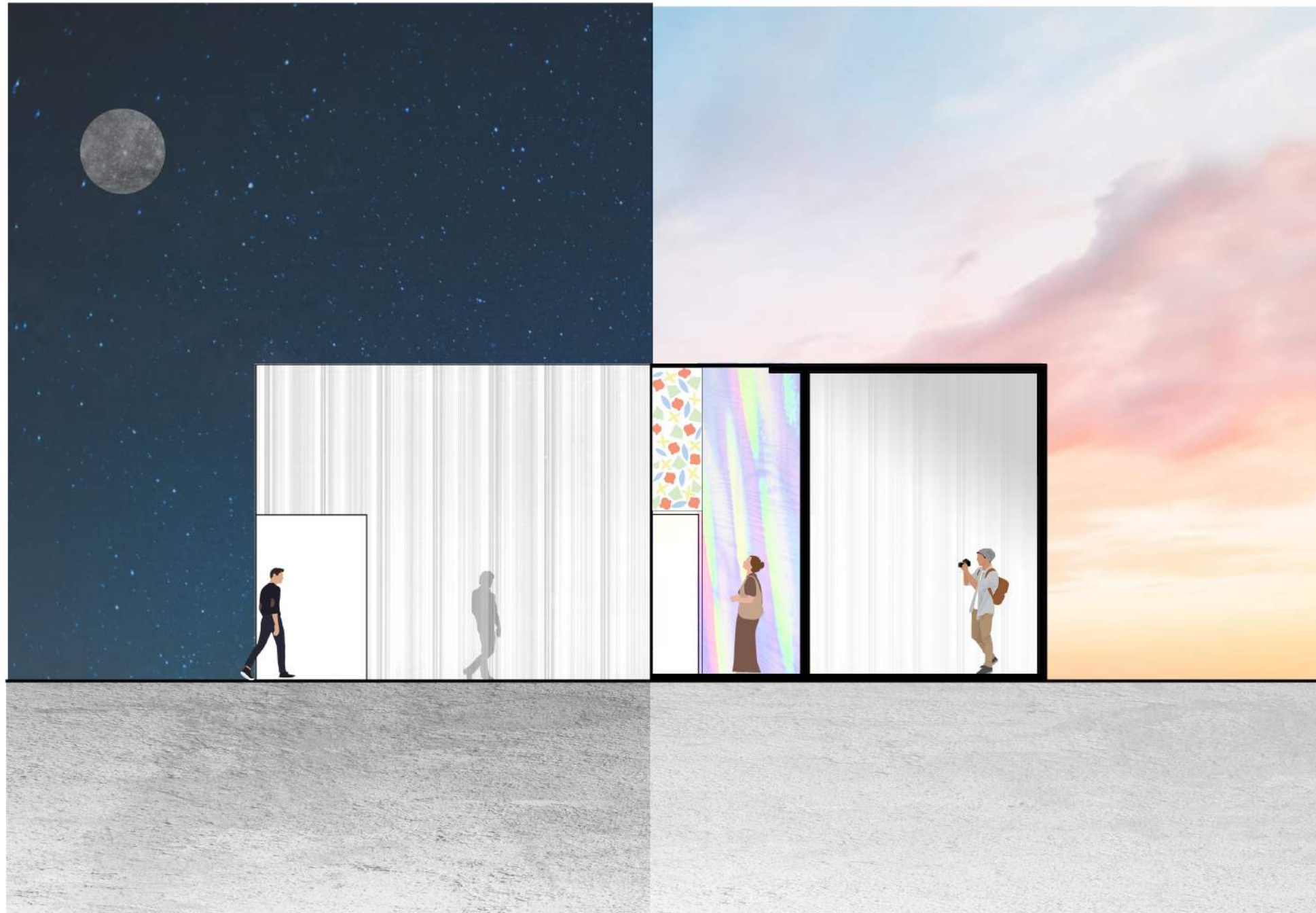
Culture is but a mosaic, the representation of wholeness from fragments, a collage made from various pieces, assembled from fragments of one's own culture with aspects often learned from other cultures and experiences. Fragments of identity is represented as circles that converge into a pattern of interconnected ring, which is then extracted to the skylight.

The Mosaic pavilion is meant to cast light on Malaysia's diversity and the harmony of cultures in Australia. Abstracted pieces from significant cultural symbols in Malaysia are curated, crafted into delicate pieces of the mosaic. Colorful refraction of the mosaic shifts throughout the day as the sun passes, reflecting our collective identities.

During the night, the pavilion lights up from the inner core, revealing the silhouette of people within. Colorful spotlights illuminate the core to create animated shadows that symbolize an individual's multidimensional identity. As a collective, the space is experienced as a harmony of overlapping reflections.

The vibrant space in the pavilion encourages exploration and interaction within the community, forging a stronger sense of belonging and cohesion. The fragments of the cultural objects shine the light on Malaysia's multicultural identity in Australia. The Mosaic Pavilion represents the collection of our respective identities through fragmentations of color and light.

BY  
ANGELICA SUJANA  
JUN REN CHIN  
WILLIAM TAN





1, Interior during daytime

2, The inner center with colourful glass fragment

3, Interior during nighttime

4, Exterior during nighttime

