

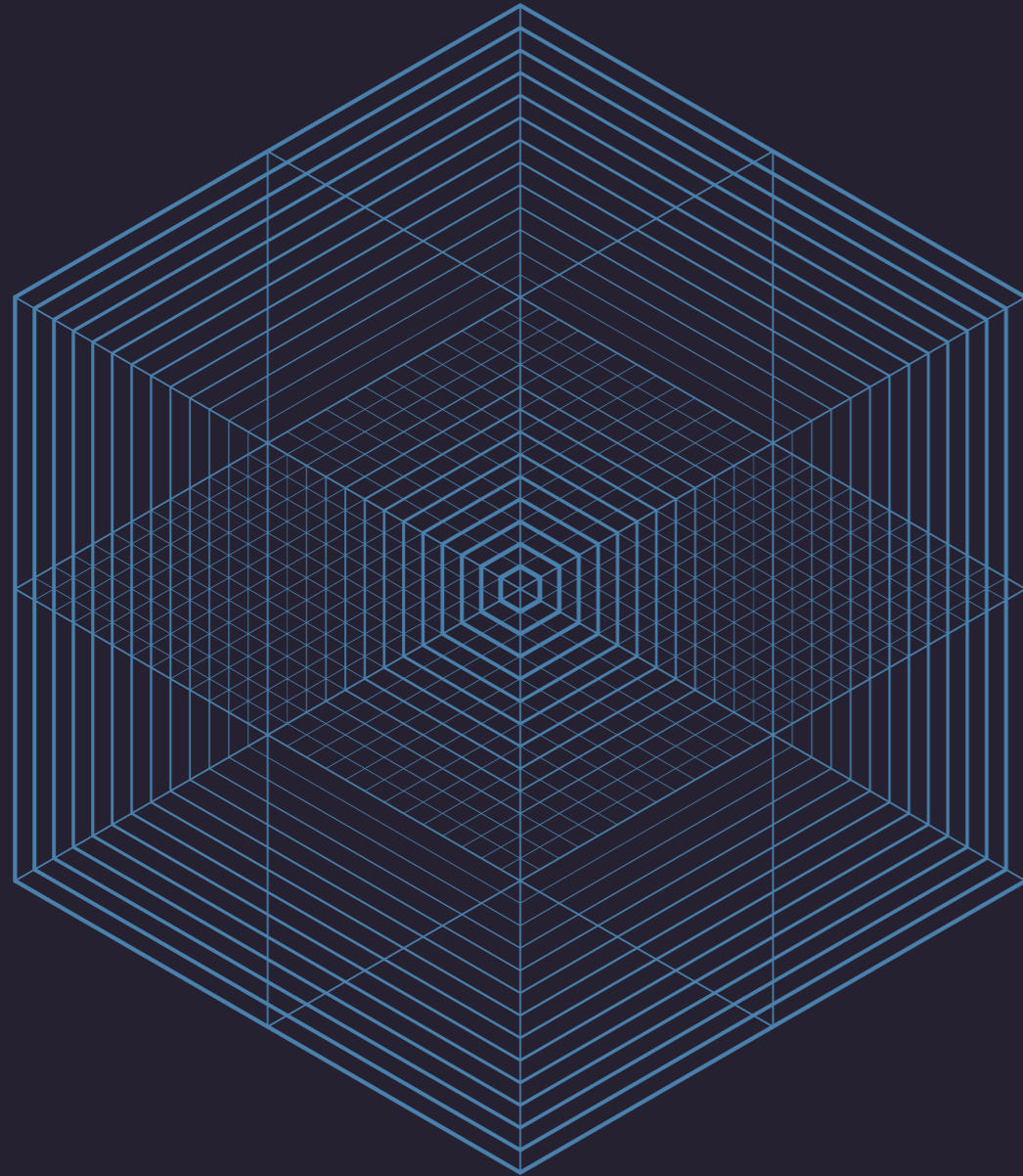
International Architecture Awards —2020



National
Architecture
Awards



Australian
Institute of
Architects



The Australian Institute of Architects thanks the partners and supporters of the 2020 International Architecture Awards.

Principal Partner



Major National Partners



National Corporate Partners



Supporting Partners



National Insurance Partner



National Media Partner



International Architecture Awards —2020

Contents

- 05 President's Message
- 06 Message from the Jury Chair
- 07 2020 Jury Members
- 09 William J. Mitchell Prize
- 10 Educational Architecture
- 12 Residential Architecture – Multiple Housing
- 14 Residential Architecture – Houses (Alterations and Additions)
- 16 Interior Architecture
- 20 Heritage
- 22 Public Architecture
- 24 Commercial Architecture
- 32 Sustainable Architecture



National
Architecture
Awards



Australian
Institute of
Architects

From the International Chapter President



Shamus Mulcahy RAIA
President

In a world saturated with awards programs, the Australian Institute of Architects (the Institute) Awards is the pinnacle for our profession nationally. Some of the projects awarded here will go on to represent our state at the National Architecture Awards; a platform at which, despite our modest Tasmanian membership numbers, we have been very successful.

This year, 24 projects are entered over nine categories. It is great to see so much diversity with half the projects situated outside the greater Hobart area. It is unusual but refreshing to have six projects in the heritage category, and 11 dealing with the reuse and adaptation of existing buildings in some way.

I acknowledge we have all been, and continue to be, consumed with concerns about our health and the health of our families and friends, and the toll this crisis is having on our economy, our businesses, and our way of life. I share this concern; changes of this scale are incredibly difficult. I am proud, though, of the way our various practices, our Chapter as a community, and our Institute have dealt with the crisis.

COVID-19 has, perhaps ironically, produced a number of broad opportunities and lessons that have the potential to address many systemic

problems. I contend that housing shortages, access to health care, education inequality, climate change and diversity in the workplace are still issues prevalent in our communities and pertinent to our profession; but I also offer the possibility that this crisis has now ploughed the furrows for taking collective action in regard to these and others.

The projects in the 'Awards - Class of 2020' were completed in a pre-COVID-19 world, yet we can draw from these projects seeds of inspiration for how we might live differently, how our workplace might change, how the dated can be renewed economically, and how minor interventions in small communities can make big differences.

Shamus Mulcahy RAIA
President, Tasmanian Chapter,
Australian Institute of Architects

From the Jury Chair



Wei Jien
Jury Chair

Now, more than ever, as we face extreme health and climate crises, architects are being called upon to be leaders in shaping the built environment. How can we adapt to a new set of design criteria that seems to change by the day? How do we create architecture that will be safe, social and sustainable? If the year 2020 was intended to bring clarity of vision, the very definition of each of these words has changed dramatically and reframed our approach.

Across cities and countries, this time of crisis has forced us to alter our course and respond as a community. As the Jury Chair of this year's International Chapter Awards, it has been revitalising to review the award submissions through this new lens. We have been encouraged by the entries with their various challenges based on unique cultural, geographical and environmental circumstances. This also reflects the evolving growth and diversity of the membership of the International Chapter. The various methodologies applied in many of these projects have translated into unique architecture that is also inherently Australian in their integrity of material, form and detail.

Together with my fellow jury members, it has been a privilege to take part in this year's awards. In spite of all that is uncertain and unknown in the world outside of our Zoom calls, we have found moments of delight through our jury deliberations. As architects abroad, we value more than ever this connection to the Australian architecture community, and we thank you for this wonderfully engaging experience.

Wei Jien
Jury Chair

2020 Jury Members



Wei Jien
L'observatoire International

Wei Jien is a registered architect in Queensland, is currently living abroad in the United States, and is a Senior Associate at L'Observatoire International. Wei moved to New York in 2012 and joined L'Observatoire International where she currently leads a team focused on various large-scale public and commercial projects and collaborates with renowned international architects like Steven Holl, Gehry Partners, OMA, DS+R and Selldorf Architects. Wei has remained active in the Australian architectural community and was Co-Creative Director of the Institute's National Conference in 2018. As a member of the International Chapter Council, her goal is to promote young Australian architects abroad and foster a support network and dialogue amongst Institute members.



Razvan Ghilic-Micu
Hassell

Razvan is an architect with a keen interest in innovation and agility and an advocate for research-centric practice. At Hassell he is involved in designing new-generation working and learning environments in Singapore and across Asia. He is a graduate of Princeton University and has over a decade of professional experience in Singapore, Shanghai, New York and Toronto. Razvan balances practice with ongoing involvement in the Singapore Institute of Architects, where he serves on the Publications Committee as the Features Editor of The Singapore Architect magazine. He is also a studio guest-lecturer at the National University of Singapore, where he leads the Hassell design studio unit, and sits on the M.Arch Thesis jury.

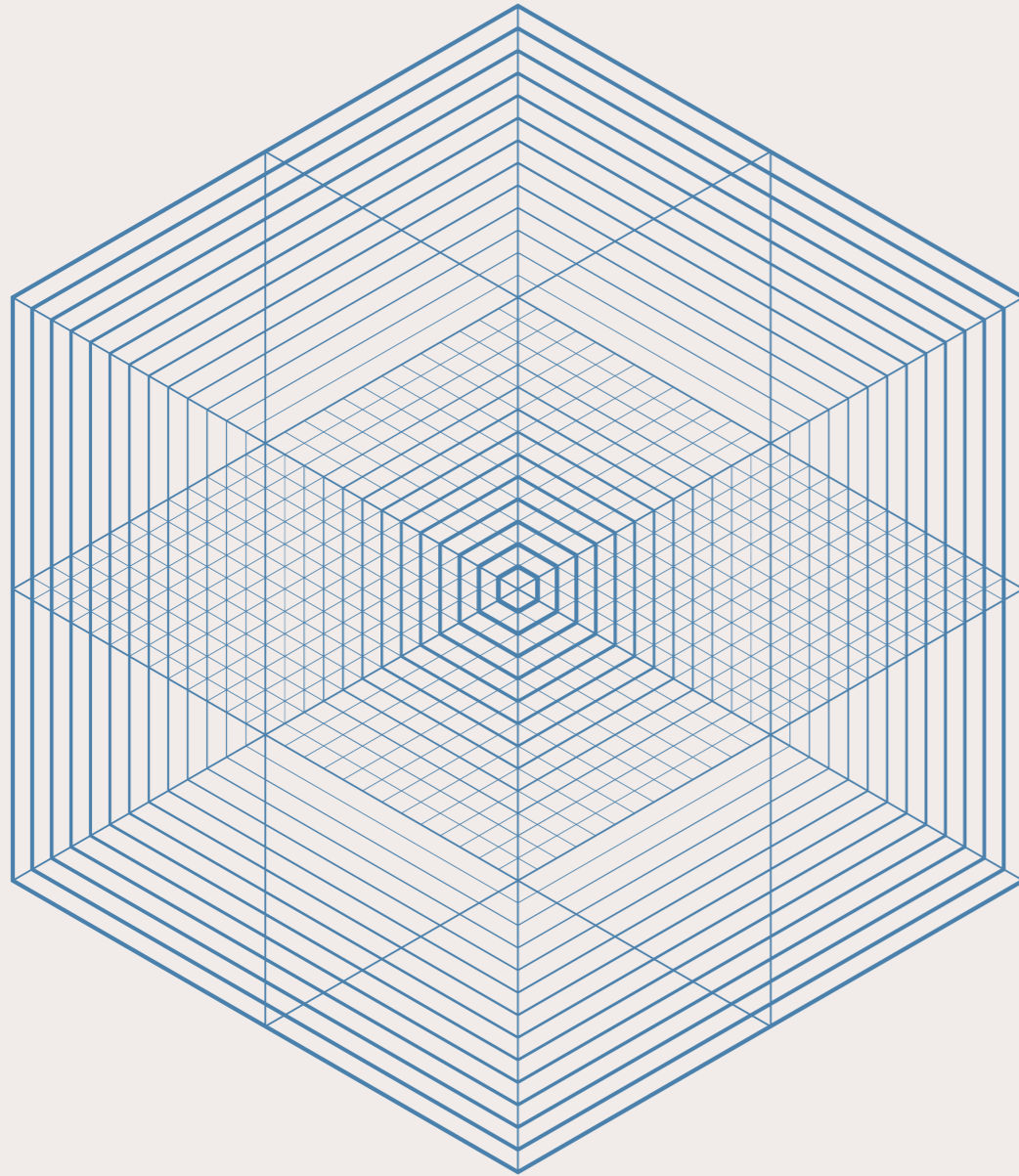


Minnie Cade
John Wardle Architects

Minnie Cade is a practising architect with over 20 years' experience in the design and delivery of projects across Australia in both the private and public sector with a strong focus on design excellence.

In 2017-2018 Minnie managed the design and delivery of John Wardle Architect's exhibition 'Somewhere Other' at the 2018 Biennale di Architettura in Venice. This included the design, manufacture, transport and installation of the piece.

Minnie has particular strengths in creative problem solving and has broad expertise in design management throughout project delivery. She has developed a combination of design, management, facilitation and business skills that are instrumental in the design review process.



William J. Mitchell Prize
Antonia Syme AM

Photography
 AWT Director Antonia Syme inspects 'Catching Breath', designed by Brook Andrew. Photo: Paul Jeffers/Fairfax Media, courtesy of the Australian Tapestry Workshop.

In 2012, the International Chapter of the Australian Institute of Architects introduced the William J. Mitchell (WJM) Prize to recognise the work of those who have provided an ongoing contribution to Australian architecture in the international arena, often in a sphere of influence running parallel to, or in support of, usual architectural practice. The jury for the Prize, which is now awarded biennially, is the entire International Chapter Council.

Past recipients have included publishers, a photographer, an academic, an 'ambassador' for the Institute's international relations, an urban planner, and an illustrator.

This year, the International Chapter have decided to award the WJM Prize to Antonia Syme AM, Director of the Australian Tapestry Workshop (ATW), for her work promoting

and curating the ATW Tapestry Design Prize for Architects (TDPA).

The TDPA is an initiative of the Board of the ATW, which Ms Syme has successfully developed and promoted throughout our membership, both nationally and internationally. Her encouragement of and clear enthusiasm for architects to enter the competition, or to include a commissioned tapestry in their work, has not only promoted the now rare and meticulous art of tapestry weaving, but also enriched the work of Australian architecture on the world stage, through the significant commissions now on display in prominent locations around the globe.

The International Chapter of the Australian Institute of Architects congratulates Antonia Syme AM for receiving the William J. Mitchell Prize for 2020.



Commendation for Educational Architecture

Eco Kindi – LAVA (Laboratory for Visionary Architecture) with Module K

This kindergarten near Hanoi aims to create a new typology for the next generation of Vietnamese children; one that creates spaces encouraging curiosity through learning.

Three semi-circular interconnecting forms create a series of protected courtyards and play spaces that allow learning through activity-based play and access to nature. Carefully sited overlooking Goong Lake, its form introduces organic shapes into the surrounding built fabric while the interiors introduce natural materials used in simple but engaging ways. Experiencing carefully designed spaces from an early age, the aim is to foster creativity and to allow young children to perceive spaces in a new way.

Minh Sang Viet Joint Stock Company – Builder
Viet Décor – Interior Designer

Photography





Award for Residential Architecture - Multiple Housing

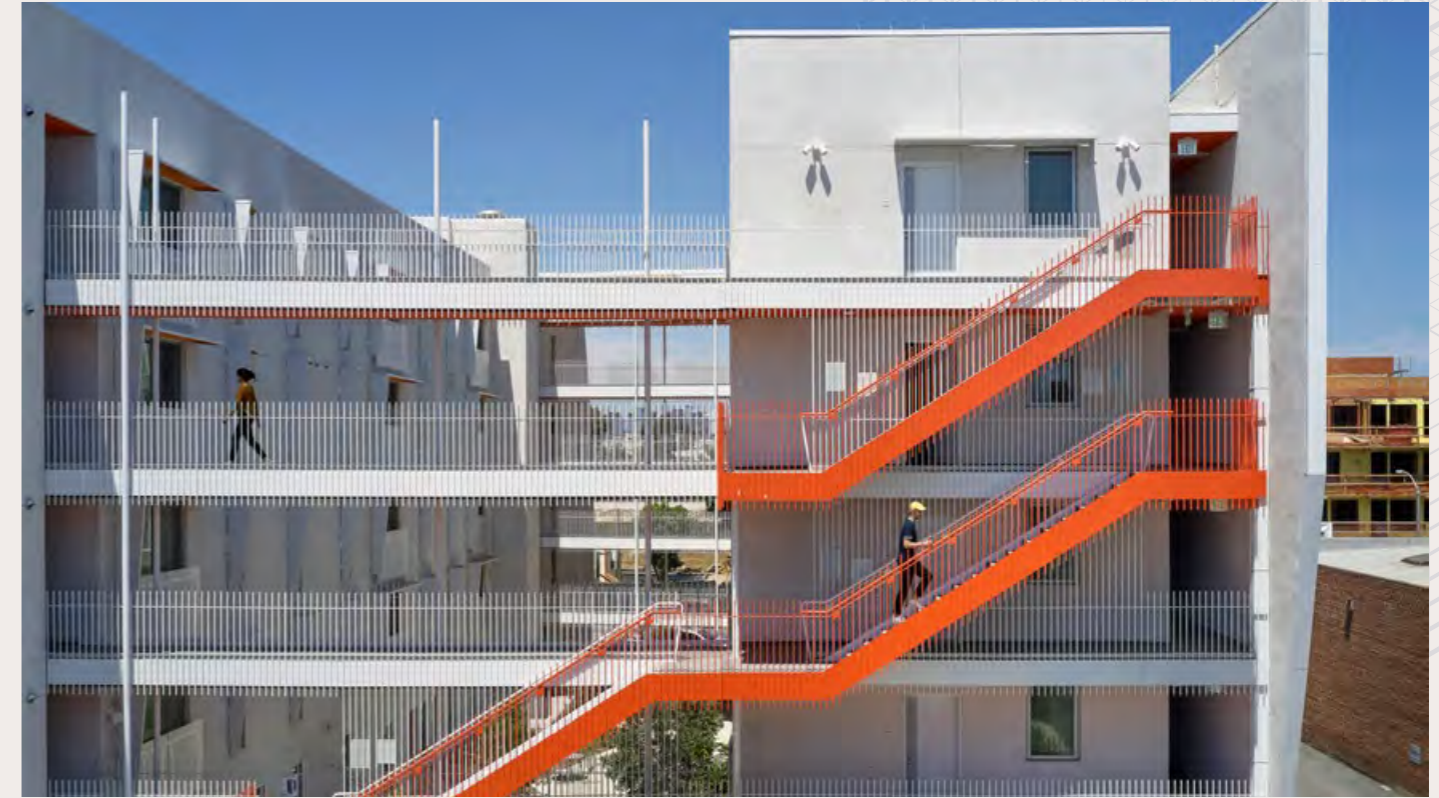
The Arroyo Affordable Housing

Koning Eizenberg Architecture

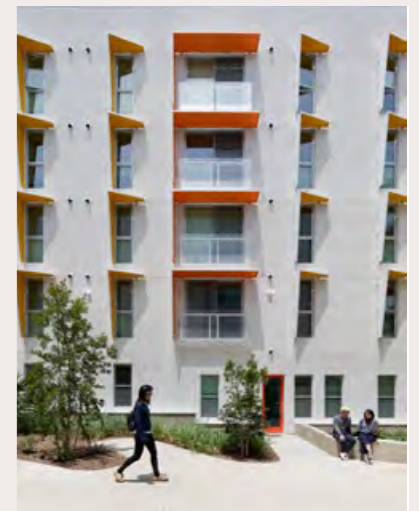
The Arroyo by Koning Eizenberg is setting an exemplary precedent for affordable housing, through clever planning and an architecture sensible to its climate, location and users.

The clear and efficient planning of the two blocks, framing a powerful courtyard space, is further amplified by open bridge and staircase connections at multiple levels, creating a truly integrated vertical community. A clear and robust architectural massing is the scaffold for a delightfully strategic use of texture, rhythm and color. The architects achieve the maximum dynamic effect through a minimal palette of architectural gestures: well-proportioned voids and solids, angular sunshade devices and a well-controlled use of colour.

Photography



- Benchmark Contractors - Builder
- Barbara Hall - Civil Consultant
- Steve Billing Landscape Architecture - Landscape Consultant
- John Labib + Associates - Structural Engineer
- Khalifeh & Associates - Mechanical, Electrical & Plumbing Engineer
- OMB Electrical Engineers - Electrical Consultant
- Green Dinosaur - Sustainability Consultant
- Promise Energy - Solar
- Finish Hardware Technology - Hardware
- AWC West - Specifications
- Veneklasen Associates - Acoustic Consultant
- Geotechnical Professionals, Inc. - Geotechnical Engineering





Award Residential Architecture – Houses Alterations – Additions)

Terrace House near Demachiyanagi

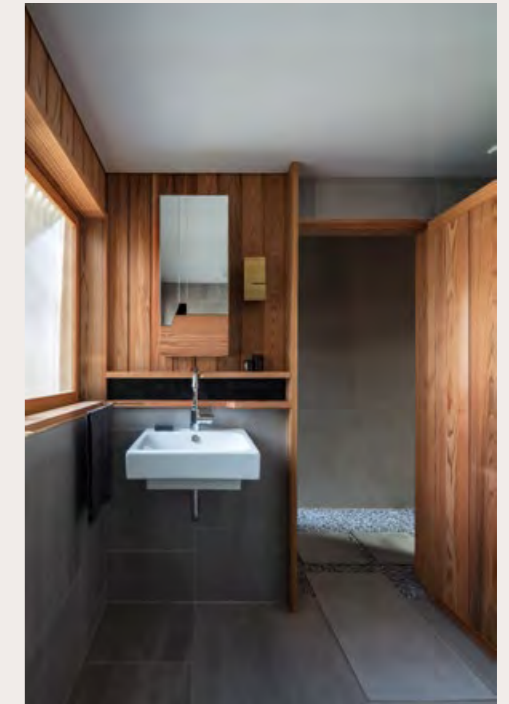
atelier Luke

The Terrace House demonstrates a thoughtful rigour that is both refined and restrained. As an addition and alteration to a small typical Japanese row house, this project demonstrates how small but intentional interventions can have a great impact. From the exterior, the restoration of the existing facade retains the original scale of the building. The application of local and traditional construction allows for a wonderful contemporary interpretation of Japanese architecture that considers how materials will age over time.

The formal interventions of the new additions are not only conceptually strong; the sequence of experience and spaces is also carefully curated. The meticulous detailing of this modest residence allows for the integrity of structure and materials to be revealed

through the intentional introduction of light in key spaces. The resultant contrast between light and shadow creates dramatic spatial transitions that seem to extend beyond the boundaries of the building and past the small footprint of the site. The layering of screens and the position of the courtyard allows the house to respond to seasonal changes and control the transition between the interior and exterior. The understated nature of this beautifully crafted residence is as detailed as it is delightful.

Matsuhiko Construction – Builder
Hideya Tanaka – Site foreman





Commendation for Interior Architecture

Aman Kyoto

Kerry Hill Architects

The interiors of the Aman Kyoto exemplify the luxury hotel brand and create an exclusive and contemporary interpretation of the Japanese onsen experience. The use of light materials and colour palette for the interior stands in dramatic contrast to the dark exterior. In the public interiors, the simple yet elegant features resonate with the building exterior and continue the crafted details that are unique to this project. The joinery, with integrated lighting elements, is thoughtfully located to create an intimate setting for the hotel room interiors.

Shimizu Corporation - Builder
 AMAN - Hotel Operator
 Toyo Architects & Engineers Office - Associate Architect
 PAC Kankyo-Mode Inc. - Engineer
 Toto Architects & Engineers Office - Structural Engineer
 Design and Management Inc. - Landscape Consultant
 MUSE-D Co. Ltd. - Lighting Consultant
 Cini-Little Japan, Inc. - Kitchen Consultant
 Bikosha Inc. - Signage Consultant





Commendation for Interior Architecture

The Work Project – Asia Square

Hassell

The Work Project creates many engaging experiences and creates spaces that align with the co-working brand's aspiration for quality and innovation. The project establishes some special moments through a series of timber-lined boxes that emphasise unique and playful textures and materials. The fit-out graciously respects the geometry and iconic order of the existing architecture of the base building by Denton Corker Marshall while creating spaces that reflect today's needs in shared work spaces.

Ngai Chin Pte Ltd – Builder
 Bondlite Engineering Pte Ltd – Services Consultant
 Switch – Lighting Consultant
 Vertical Garden Patrick Blanc – Vertical Garden Designer
 Space Design Architects – Architectural Qualified Person





Award for Heritage

MuseumLab

Koning Eizenberg Architecture

MuseumLab, The Children's Museum of Pittsburgh, is an innovative and creative revitalisation of the important yet abandoned historic Pittsburgh Carnegie Library (c1890). The project has reinvented an austere masonry edifice into an exciting and meaningful educational building providing access to art-based activities to children from disadvantaged backgrounds.

The approach taken to reveal the historic architecture that had been remodelled, concealed or damaged over time was both clever and inspired. This approach formed the basis for decisions regarding how each heritage element would be revealed and how new elements should integrate with old. The need to work to a tight budget resulted in minimal intervention and an emphasis on

the original features aimed at inspiring the imaginations of the young visitors. In this way, the building itself has become an exhibit. The spaces are both light-filled and colourful, but more importantly rich and textural. The historic bones of the building remain clear even as spaces are opened up and reconnected. Double-height spaces provide new view lines and a new appreciation of the historic fabric.

This children's museum, offering cutting-edge experiences in art, technology and making, is both beautiful and forward-thinking and has propelled a disused and forgotten heritage building back into the heart of the community.

Mascaro Construction - Builder
 Pentagram - Graphics
 Studioi with Lam Partners - Lighting Consultant

FreelandBuck - Ceiling Artwork
 IDEa Center at University of Buffalo - Universal Design
 Branchpattern - Sustainability
 Clio Consulting - Heritage Consultant
 AES Atlantic Engineering Services - Structural Engineer
 Iams Consulting, LLC - Mechanical, Electrical, Plumbing (MEP) Engineer & Fire Protection
 Langan Engineering & Environmental Services - Civil Consultant
 BABICHacoustics - Acoustic Consultant
 Ryder Henry - Lobby Artwork
 Mia Tarducci - Artwork - Some Big Words
 Maureen Walsh - Artwork - Chromatic Passage
 Ramon Riley - Artwork - AMUSE





Commendation for Public Architecture

Parliament of Samoa - Maota Fono

Guida Moseley Brown Architects

The Parliament of Samoa is a contemporary interpretation of the traditional meeting building. The meticulously detailed domed roof feels effortless in its resilient design to remain both elegant and robust at the same time. The rigour of both the exterior and interior elements is commendable based on the availability of local materials and construction. There are many symbolic meanings embedded into this project that remain strong in their subtle integration and come together to create a wonderful celebration of heritage, culture and environmentally responsive design.

Craig Construction - Builder
 Manteena - Project Manager
 Rob Jessop P/L - Environmental Scientist
 Northrop - Civil Consultant
 Northrop - Structural Engineer
 Northrop - Hydraulic Consultant
 Norman Disney Young - Electrical Consultant
 Norman Disney Young - Mechanical Consultant
 Rudds - Acoustic Consultant
 Rider Levett Bucknall - Quantity Surveyor





Award for Commercial Architecture

Aman Kyoto

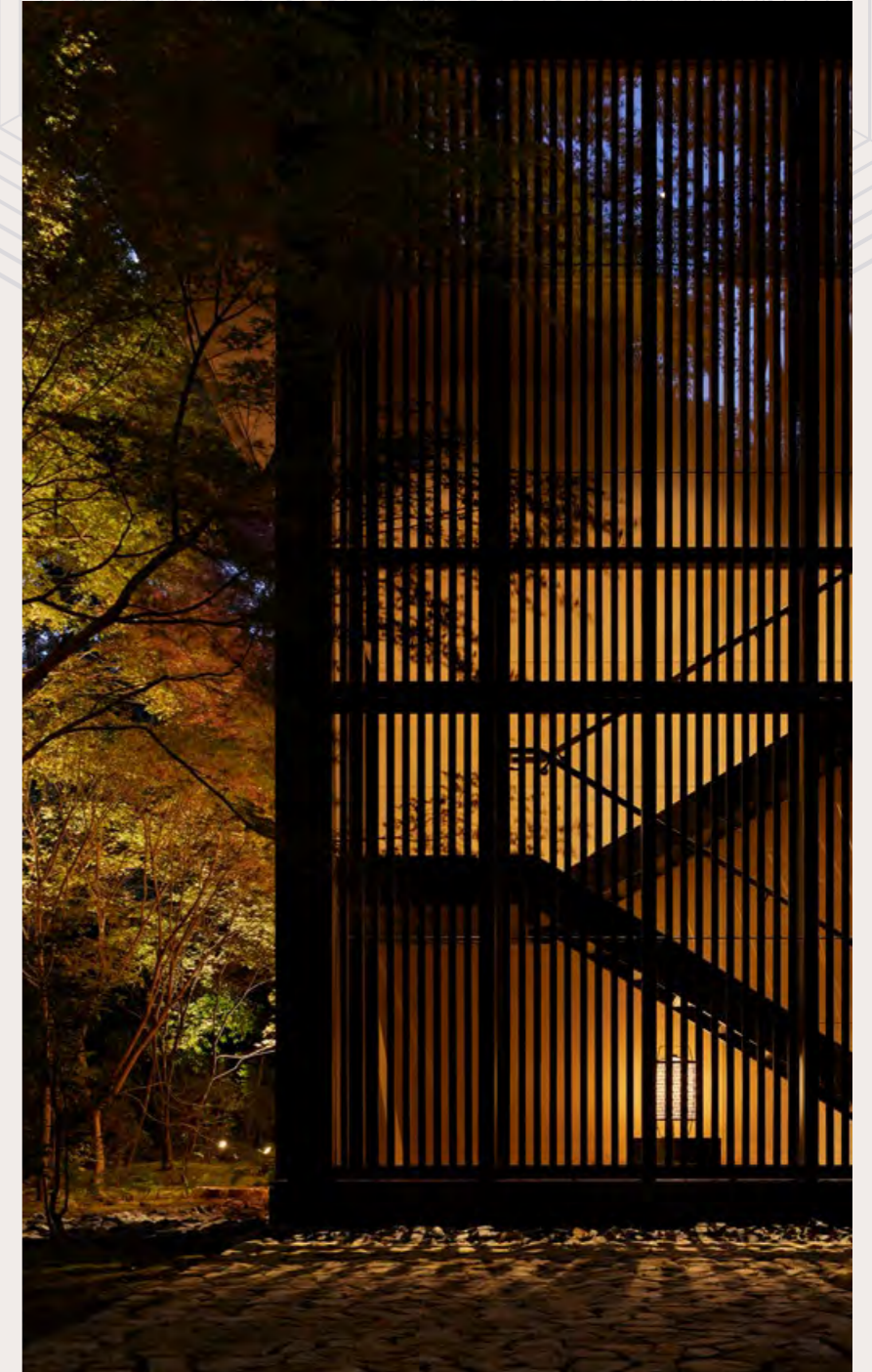
Kerry Hill Architects

The Aman Kyoto is a series of new pavilions carefully integrated to the rural context and rich history of its site. The form and order of each pavilion engages with traditional Japanese construction while being completely contemporary in its resolution. The buildings are placed strategically in order to take advantage of the terrain and landscape while aligning with significant remnants of the original garden. The stone path, which runs between the pavilions and frames the views out to the existing courtyards, forms intentional connections that could almost be part of the same master plan.

Over the course of time, the final built outcome retains the integrity and clarity of the existing site. The meeting of the new and old is seamlessly integrated to give each space a unified experience that is balanced between the building and the landscape beyond. The elegant forms of the pavilions and screens further reinforce this strong relationship, like lanterns amongst the forest landscape. The understated elegance of this project reflects the luxury of the Aman brand while remaining site-specific thus creating a unique identity for this exclusive hotel.



Shimizu Corporation – Builder
 AMAN – Hotel Operator
 Toyo Architects & Engineers Office – Associate Architect
 PAC Kankyo-Mode Inc. – Engineer
 Toto Architects & Engineers Office – Structural Engineer
 Design and Management Inc. – Landscape Consultant
 MUSE-D Co. Ltd. – Lighting Consultant
 Cini-Little Japan, Inc. – Kitchen Consultant
 Bikosha Inc – Signage Consultant





Commendation for Commercial Architecture

Funan

Woods Bagot

Recently reopened in Singapore's Civic district, Funan builds on its 35-year history as a digital shopping hub for the city-state, adding to the mixture of programs a vibrant opportunity for lifestyle retail, F&B, coworking and co-living.

The eclectic contemporary aesthetic is supercharged with colour, light and enhanced by digital content. Physically and programmatically, Funan revolves around The Tree of Life—a six-storey timber and steel structure—inclusive and appealing to a broad demographic of live-work-play consumers.

Woh Hup - Builder

Photography
Darren Soh





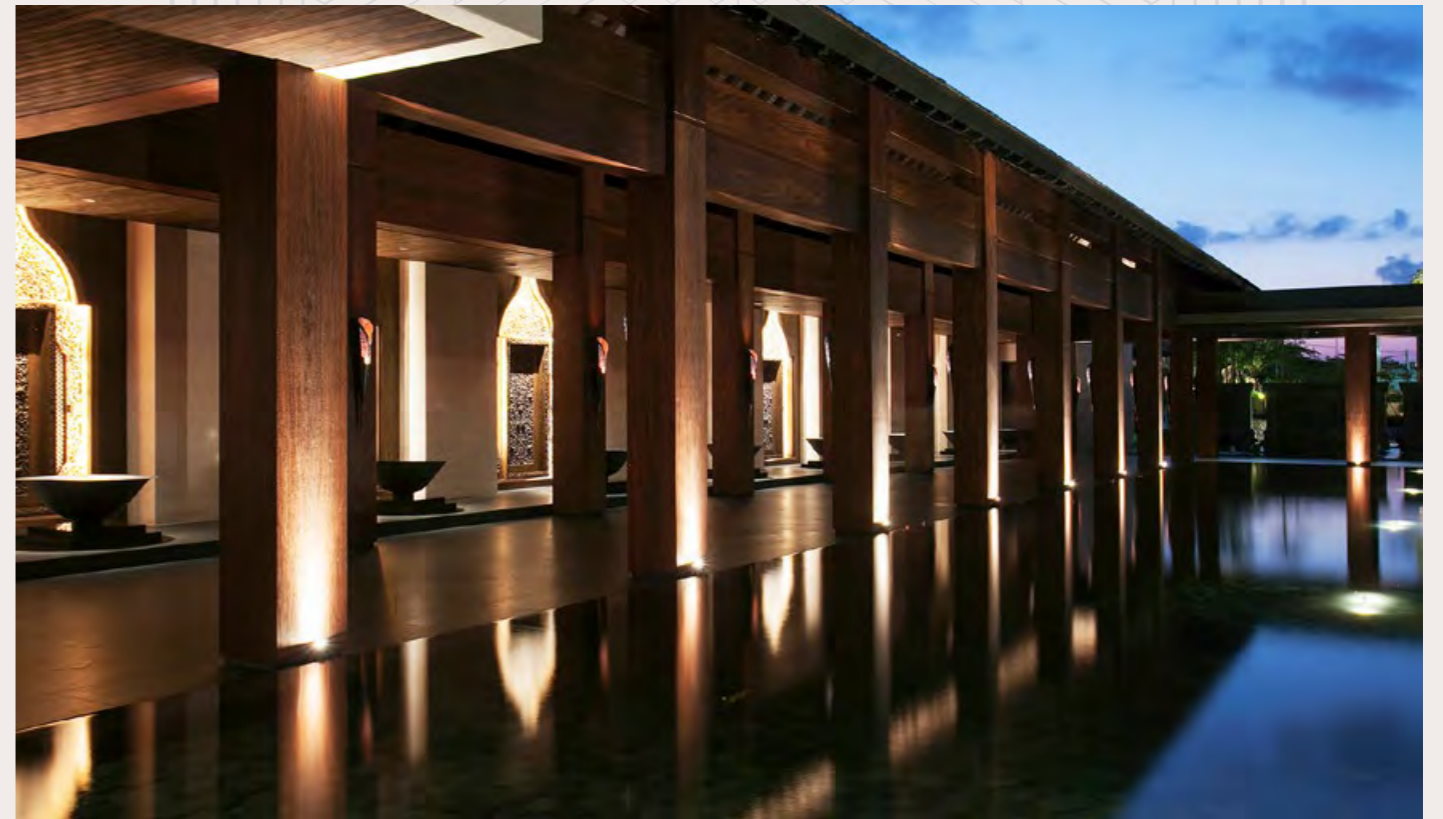
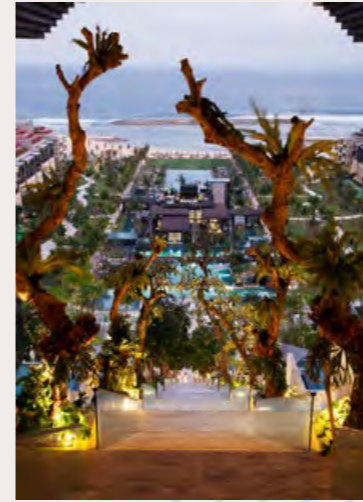
Commendation for Commercial Architecture

The Apurva Kempinski Bali

Denton Corker Marshall Jakarta /
Duta Cermat Mandiri

Located on the southern tip of Bali, the Apurva blends multiple Balinese motifs and influences, is assured in its planning moves and creative in its approach to massing and sustainability. The strong cascading landform architecture responds to the steep natural cliff behind and creates the clever illusion of each room being a private villa, even in a dense hotel clustering. Inspired by the stereotomic stepped profiles of temple architecture, the project is robust in its form-making yet subtle in its use of materials, texture and colour, bridging the gap between vernacular tradition and contemporary hospitality.

Photography
Duta Cermat Mandiri





Commendation for Commercial Architecture

The Tiing

Nic Brunsdon

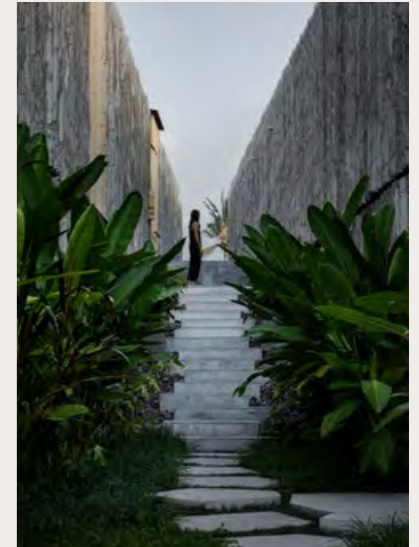
Situated on the northern coast of Bali, the Tiing immediately stands out through its visible connections with the vernacular forms and construction techniques of the land it inhabits. Embracing its climate and means of production as an expression of rugged regionalism, the planning and massing of the architecture responds to wind, views and celebrates the symbology, craft and materials of Balinese culture.

Positioned as a 'reward for the intrepid', the Tiing is charming in its earnestness and an example of well-crafted minimalist neo-vernacular.

MANGUNING – Builder

Parisuda Mangun – Developer

Photography
Ben Hosking





Award for Sustainable Architecture

MuseumLab

Koning Eizenberg Architecture

MuseumLab is a benchmark example of the repurposing of an abandoned building and its revitalisation as a valued community asset in a disadvantaged neighbourhood. It is a children's museum that offers cutting-edge experiences in art, technology and making, with a focus on curiosity and discovery.

MuseumLab demonstrates how a heritage building, built in an era when construction took no account of thermal performance, natural daylight and energy consumption, can be reinvented into a contemporary and sustainable building. The design team have elegantly mastered the difficulty of retrofitting sustainable systems and materials into an historic fabric. Energy-efficient systems for air handling, lighting and power have been cleverly inserted to remain unobtrusive

or unseen contributing to a 60% reduction in energy usage. High-performance façade elements have been incorporated in a sensitive and considered way into the existing historic fabric turning what was almost an archaeological ruin into a functioning thermal envelope.

MuseumLab is also the first building in the United States to achieve a Universal Design certificate from the Center for Inclusive Design and Environmental Access for a design that is welcoming to all.

Mascaro Construction - Builder

Pentagram - Graphics

Studioi with Lam Partners - Lighting Consultant

FreelandBuck - Ceiling Artwork



IDEA Center at University of Buffalo - Universal Design

Branchpattern - Sustainability

Clio Consulting - Heritage Consultant

AES Atlantic Engineering Services - Structural Engineer

Iams Consulting, LLC - Mechanical, Electrical, Plumbing (MEP) Engineer & Fire Protection

Langan Engineering & Environmental Services - Civil Consultant

BABICHacoustics - Acoustic Consultant

Ryder Henry - Lobby Artwork

Mia Tarducci - Artwork - Some Big Words

Maureen Walsh - Artwork - Chromatic Passage

Ramon Riley - Artwork - AMUSE





Award for Sustainable Architecture

The Arroyo Affordable Housing

Koning Eizenberg Architecture

MuseumLab is a benchmark example of the repurposing of an abandoned building and its revitalisation as a valued community asset in a disadvantaged neighbourhood. It is a children's museum that offers cutting-edge experiences in art, technology and making, with a focus on curiosity and discovery.

MuseumLab demonstrates how a heritage building, built in an era when construction took no account of thermal performance, natural daylight and energy consumption, can be reinvented into a contemporary and sustainable building. The design team have elegantly mastered the difficulty of retrofitting sustainable systems and materials into an historic fabric. Energy-efficient systems for air handling, lighting and power have been cleverly inserted to remain unobtrusive or unseen

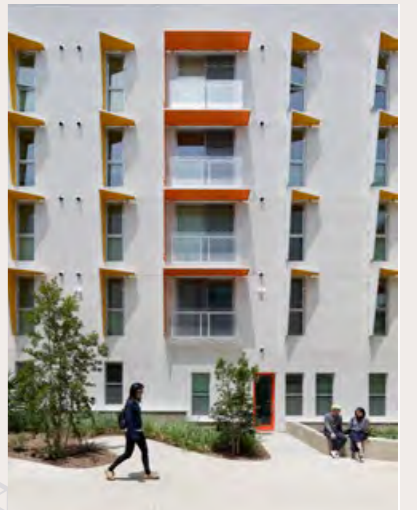
contributing to a 60% reduction in energy usage. High-performance façade elements have been incorporated in a sensitive and considered way into the existing historic fabric turning what was almost an archaeological ruin into a functioning thermal envelope.

MuseumLab is also the first building in the United States to achieve a Universal Design certificate from the Center for Inclusive Design and Environmental Access for a design that is welcoming to all.



Mascaro Construction – Builder
 Pentagram – Graphics
 Studioi with Lam Partners – Lighting Consultant
 FreelandBuck – Ceiling Artwork
 IDEa Center at University of Buffalo – Universal Design
 Branchpattern – Sustainability
 Clio Consulting – Heritage Consultant
 AES Atlantic Engineering Services – Structural Engineer
 Iams Consulting, LLC – Mechanical, Electrical, Plumbing (MEP) Engineer & Fire Protection
 Langan Engineering & Environmental Services – Civil Consultant
 BABICHacoustics – Acoustic Consultant

Ryder Henry – Lobby Artwork
 Mia Tarducci – Artwork – Some Big Words
 Maureen Walsh – Artwork – Chromatic Passage
 Ramon Riley – Artwork – AMUSE





Commendation for Sustainable Architecture

Miura Fold House

James Stockwell Architecture

The Miura Fold house blends seamlessly with its surrounding landscape. Passively heated and cooled, the well-insulated home makes great use of its thermal mass and strategic north-east orientation with minimal openings to east and west. Much of the excavated stone is reused in the surrounding shelter walls, integrating the house with the site. The low embodied-energy materials, low toxin finishes and local construction techniques further reduce the ecological impact of this dwelling, making it a commendable example of sustainability by design.

Spearhead Developments – Builder

Carl Meyer – Engineer

Photography
Simon Larkin



