

WHO BECOMES THE SCAPEGOAT



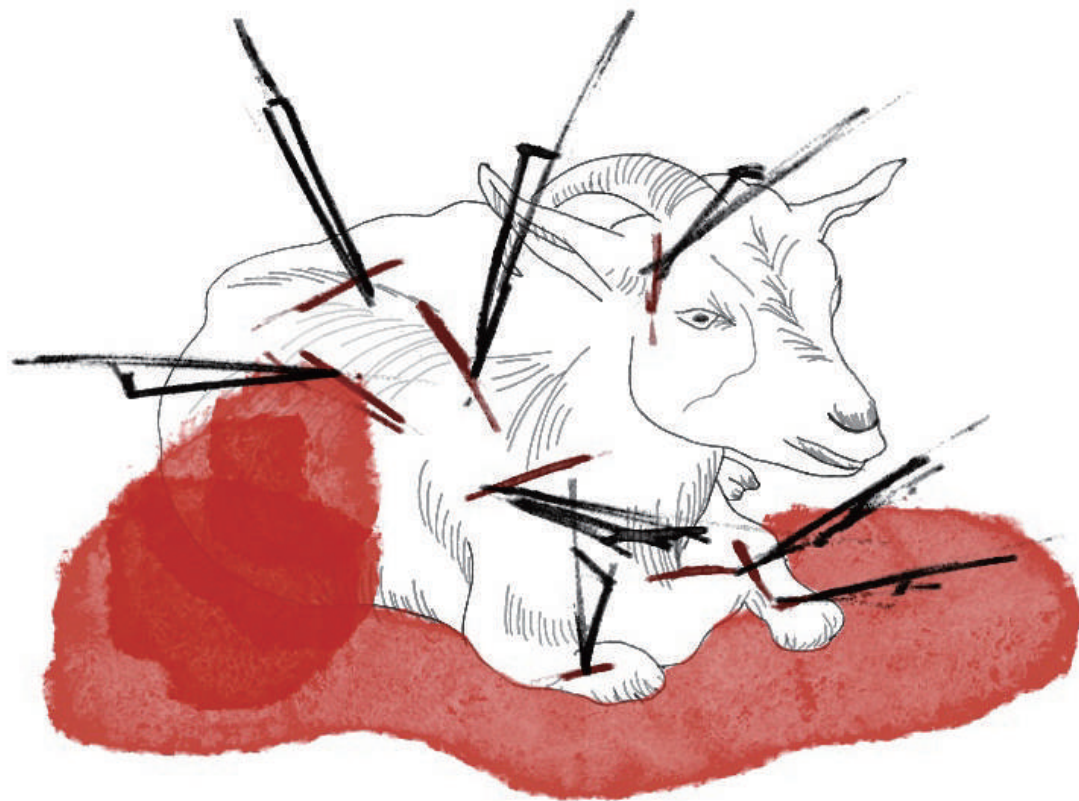
Identity connected to migrant cultures

+

Victimization

+

Performing arts & culture



"If the Tiber rises as high as the city walls, if the Nile does not rise to the fields, if the weather will not change, if there is an earthquake, a famine, a plague—straightway the cry is heard: 'Toss the Christians to the lion!' So many of them for just one beast?"

From Tertullian's Apology, translated by Rudolph Arbesmann

SONA SUPERSTUDIO 2021
CHENXI (AURORA) WANG & ZONGLEI (OLLIE) MAO
University of Melbourne



29.8%

Australia's population were born overseas

Multiculturalism in Australia



Multiculturalism encourages individual elements within society to remain identifiable and still make a comprehensive whole.



Racism is a fundamental trait of human nature. People may feel superior to the newcomers, or frightened by them, or in other ways feel we should not keep too close a company with them.



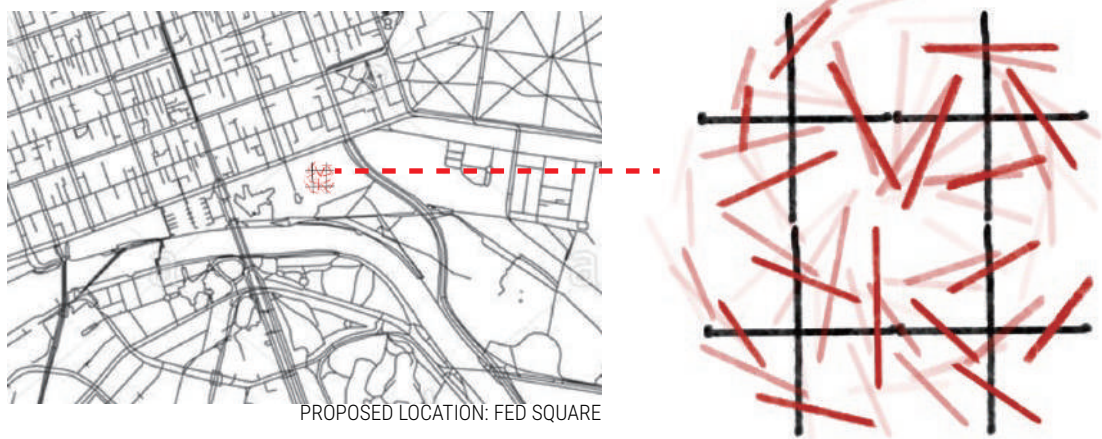
Different group/race of people devise ways of protecting themselves from any possible contamination, erecting fences, physical or sociological, to defend their perceived rights.



Who will be the next scapegoat?

PROPOSITION

The framing proposition is to through the establishment of a series of interactive installation (Creating a stimulus performance model which shows two-way feedback system by shifting the panels) and multiple perceptions in the architectural space. The design pursues an ambition of reverse projection of the scape-goat's mentality, which is the transfer of frustration and the tendency to aggression, within the Australian multiculturalist identity.

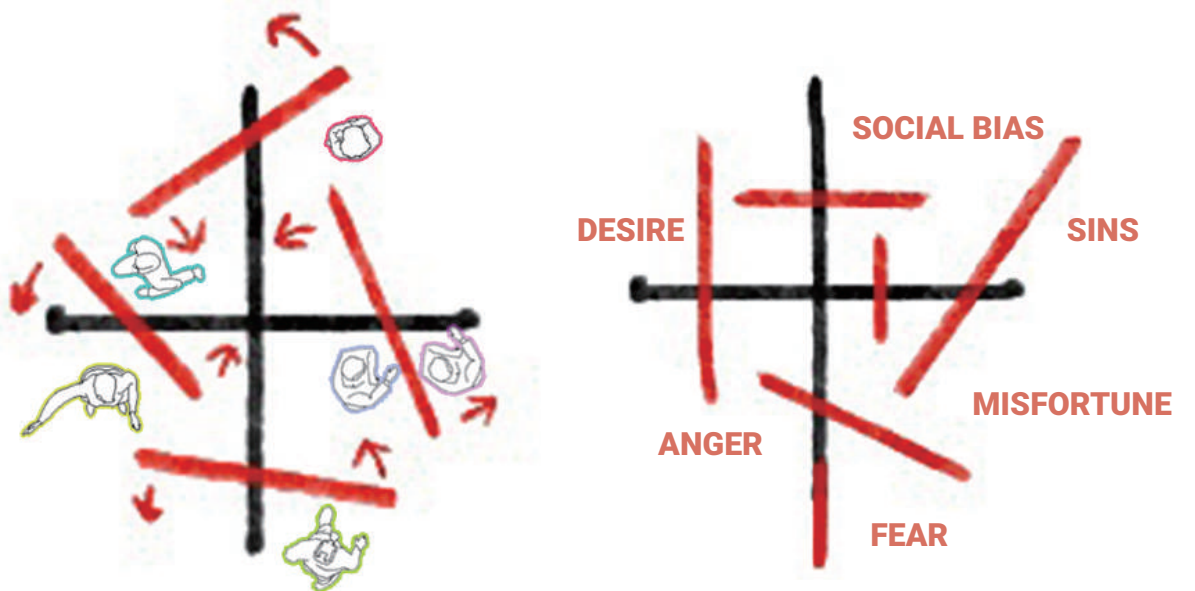


STAGE1: PROJECTION

Sin and misfortune can be transferred from one person to another, from a group to another group. Today, we may label this mental process as projection.

Individuals can see in others the fear, anger, and desire that mainly exist in themselves. It is not themselves but others who are responsible for their misfortune.

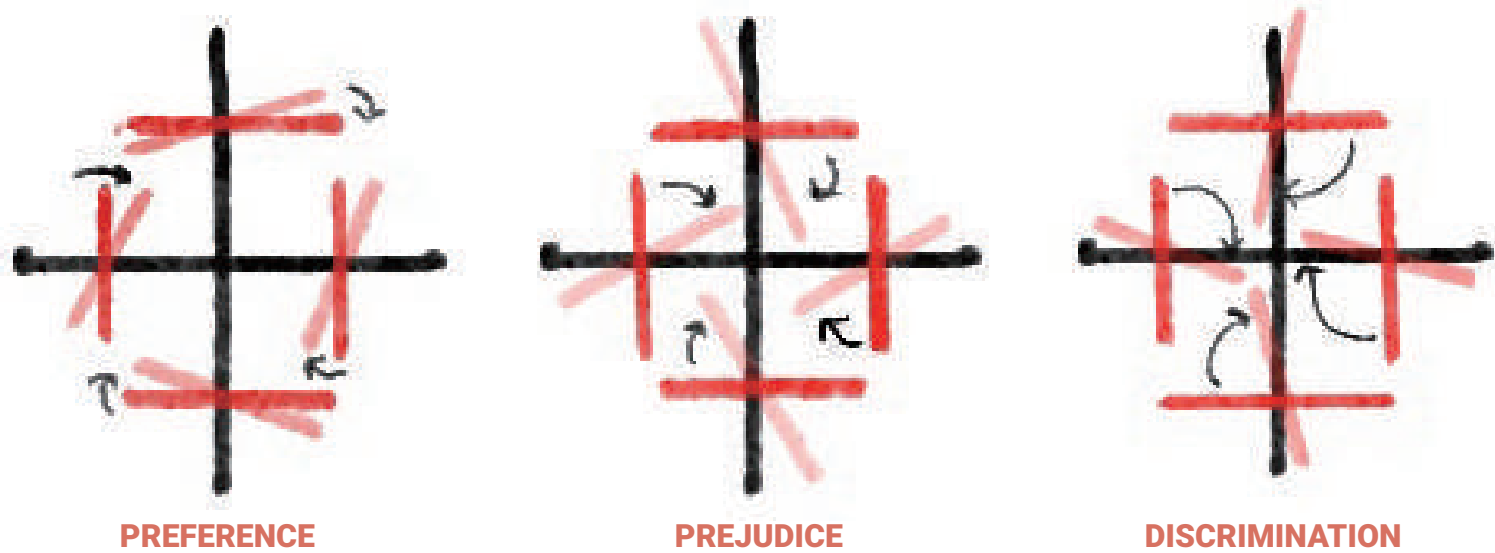
SINGLE MODULE MODEL (TOP VIEW)
Users will push the panel front of them to explore the routes in the space, while creates hamper for the people on the other side



STAGE2: PREFERENCE - PREJUDICE - DISCRIMINATION

Some minorities at the psychological level have only suffered mild reprimands; while other groups have received strong hostility, which we call "scapegoats." This applies to minorities at any psychological level, no matter if they suffer from mild discrimination or full-scale persecution.

Mainstream groups hold stereotypes of small groups with significant racial characteristics and are accompanied by discriminatory behaviors. The result of this is that the members of this small group become more and more resentful, which in turn deepens the tendency of their group to separate.



STAGE3: DISORDER, MULTI-DIRECTIONALITY, TEMPORALITY

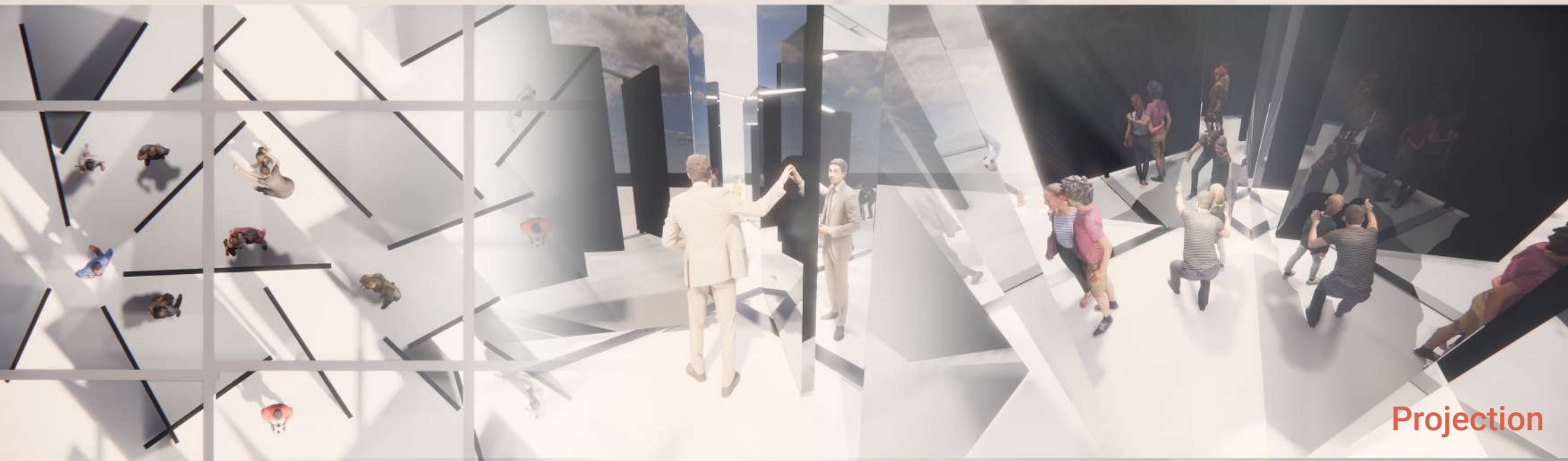
Some outside groups have innocently endured the anger caused by the setbacks of the inside groups. This theory reflects a large part of reality, but it cannot explain why only certain groups have become victims of prejudice, and why anger does not happen to other groups.

Just as we cannot clearly judge when a group is treated as a scapegoat and when it is not, we cannot find a clear principle to summarize the choice of scapegoat. The essence of the problem seems to be that different groups are selected for different reasons.

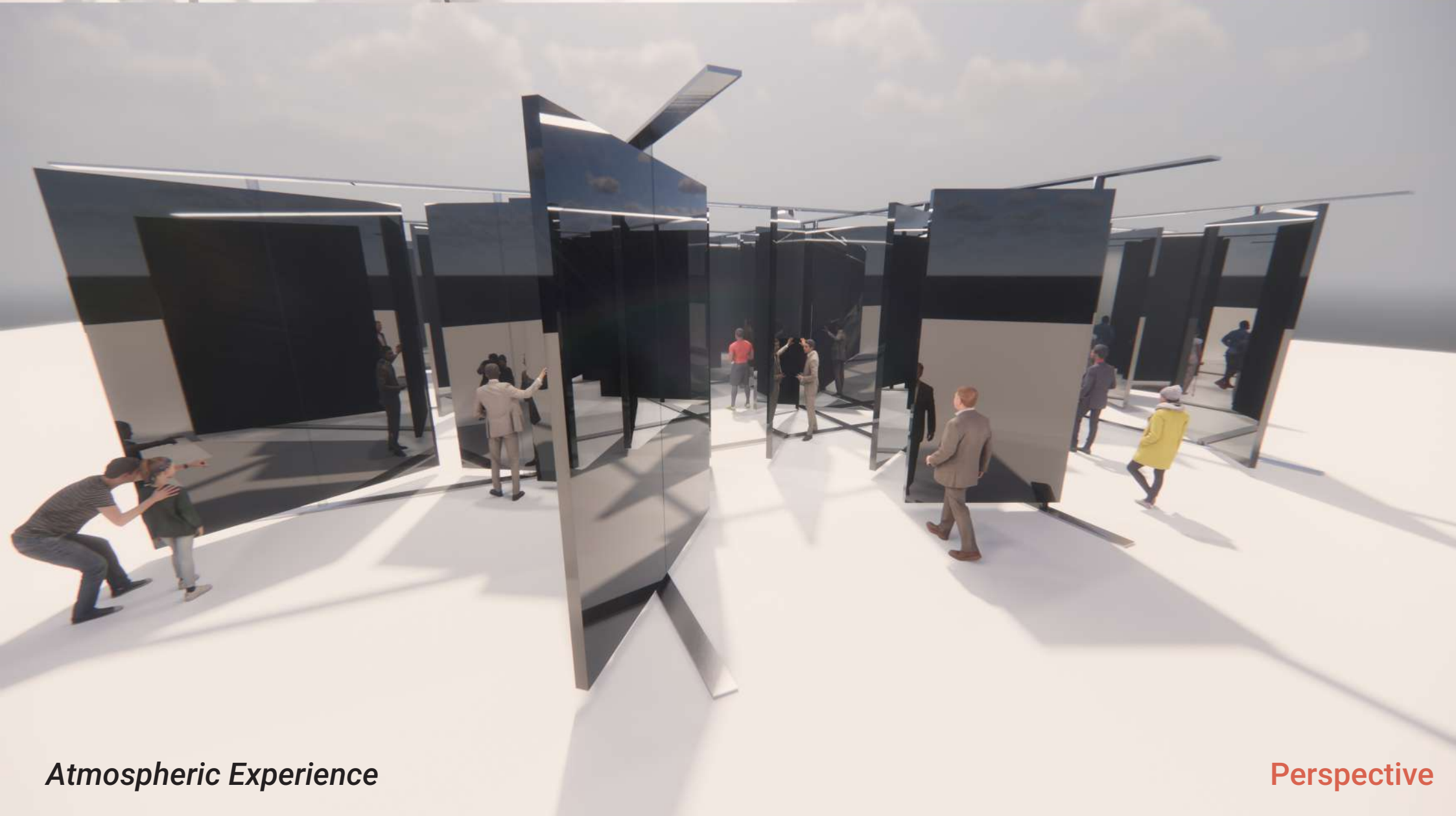




Plan



Projection



Atmospheric Experience

Perspective