

D

● garramilla/
DARWIN

S

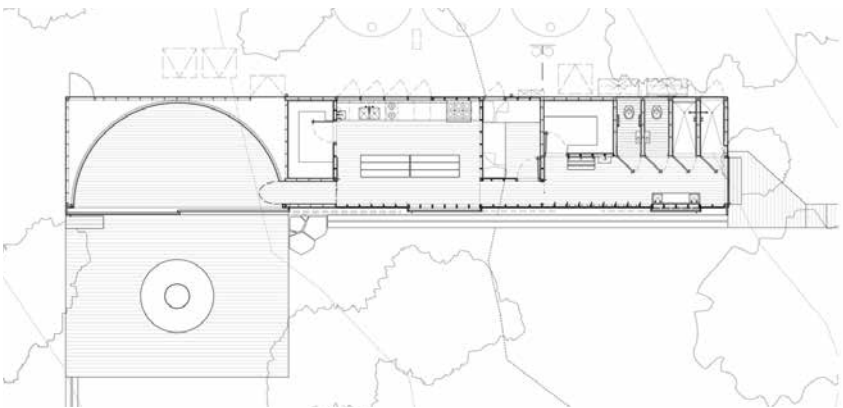
● gadigal land/
SYDNEY

T

○ lutruwita/
TASMANIA

DULUX STUDY TOUR
12.05.2022 - 24.05.2022_
Observations + Reflections
LIZ WALSH

lutruwita/ TASMANIA
DAY 01_
krakani lumi _wukalina/MT WILLIAM NATIONAL PARK
TAYLOR & HINDS ARCHITECTS

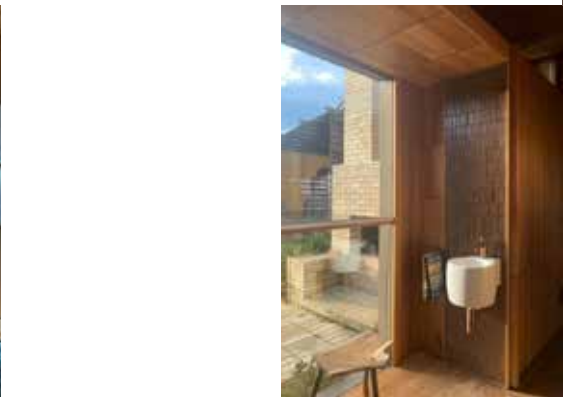
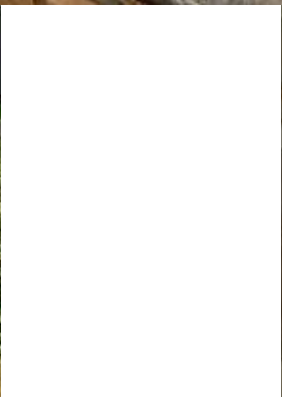
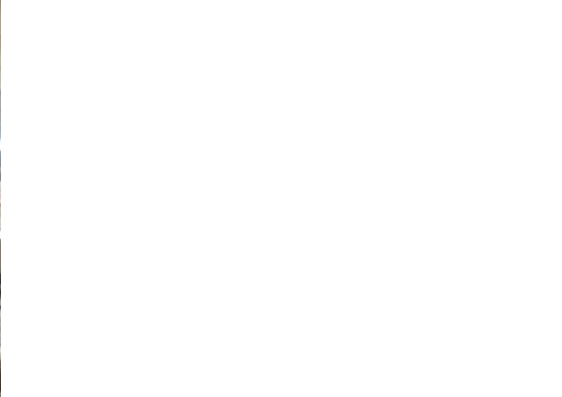


lutruwita/ TASMANIA
DAY 01_
Install House_ Ingle Hall
PARTNERS HILL

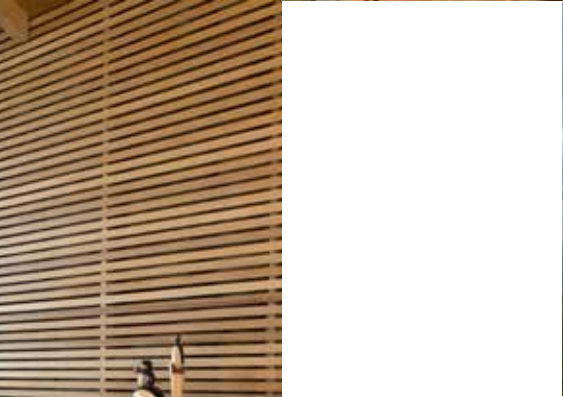


lutruwita/ TASMANIA
DAY 02_
Sunny Bank House
CORE COLLECTIVE



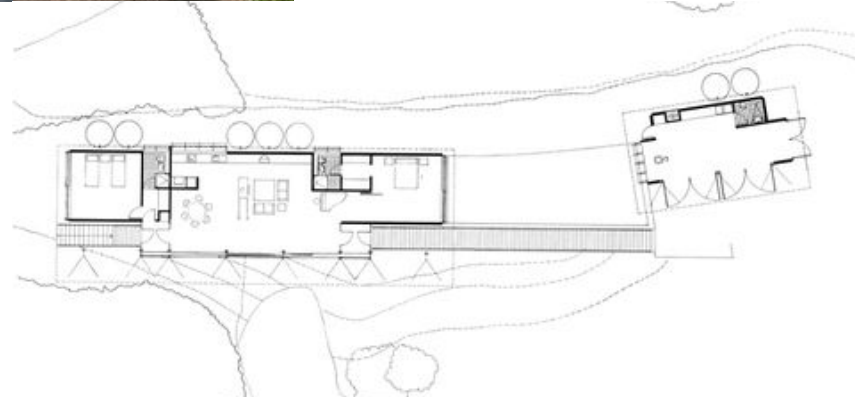


lutruwita/ TASMANIA
DAY 02_
The Shearers Quarters & Captain Kelly's Cottage
JOHN WARDLE ARCHITECTS





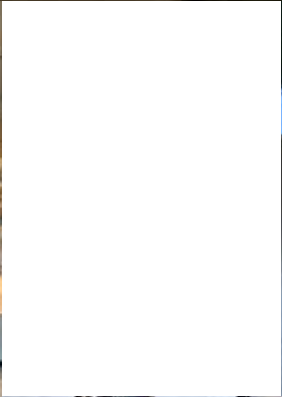
THE BLUE MOUNTAINS
DAY 04_
The Simpson-Lee House
GLENN MURCUTT





gadigal land/SYDNEY
DAY 05
Chau Chak Wing
STUDIO PLUS THREE

"Having seen the outside of so many wonderful art facilities we were well prepared to visit the The Nicholson Galleries, Chau Chak Wing Museum at The University of Sydney by Simon Rochowski's practice Studio Plus Three. The axial spatial planning, rigorous material exploration and overall execution were wonderful to experience – this visit affirming a unique and very moving aspect of the Australian Dulux Study Tour that is the opportunity to see and experience the work of fellow recipients. Such a delight!"



gadigal land/SYDNEY
DAY 05_
Smart Design Studio
SMART DESIGN



gadigal land/SYDNEY
DAY 05_
Indigo Slam
SMART DESIGN



"From the gallery we made our way to Stoke Street – a warehouse redevelopment that is home to both Smart Design Studio and studio Director, William Smart. The office spaces are located within the original warehouse footprint, with the largely altered existing facade demolished and replaced by a fantastically precise brick veil that William described as, "unraveling to the street, marking the entry foyer and providing privacy to the mezzanine offices while peeling away to frame indirect views of the sky and the trees." Internally the layout is characterised by a lofty open plan studio space flanked by project pin-up boards – strategically located to conceal back of house functions. Like many of the projects we visited today the building's material palette is intentionally industrial and spartan. Beyond the studio, up a perfectly executed spiral staircase, we crossed the threshold into William's home – a space more akin to a chapel than an apartment. The two-bedroom home occupies the narrow roof top of the reconstructed foyer space below. The plan is divided into four spaces, each articulated by a catenary arch. The arched volumes are pushed and pulled to throw light across the curved ceilings and allow space for an outdoor roof terrace. Again, the palette is distilled to only three or four key materials. There is an elemental clarity to William's space whereby each part works in unison to express the ingenuity of the structural system – the result is a kind of architectural perfection." Blog excerpt by



gadigal land/SYDNEY
DAY 05_
Smart Design Studio
SMART DESIGN





gadigal land/SYDNEY
DAY 07_
Jorn Utzon
THE SYDNEY OPERA HOUSE



gadigal land/SYDNEY
DAY 07_
Candalapas Associates
PUNCHBOWL MOSQUE



"One of the most memorable parts of the Dulux Study Tour was visiting Adam Haddow's rooftop apartment. Adam's thriving native garden and off-form concrete interiors were incredibly beautiful. However, it was Adam's reflections that were particularly inspiring. Through his own projects, Adam is constantly questioning and challenging notions of "home". When asked about his home, Adam explained that they currently use 40% percent of their apartment, 60% of the time and 60% only 40% of the time. As a result, Adam is reconceptualising a new home would be 40% of the current apartment's size while the remaining 60% would be reconfigured as a bedsit apartment for visiting parents and a ground floor food and beverage venue included to cater for large family lunches. Adam's investigation into new modes of habitation is very clever and something I will carry into my future practice."

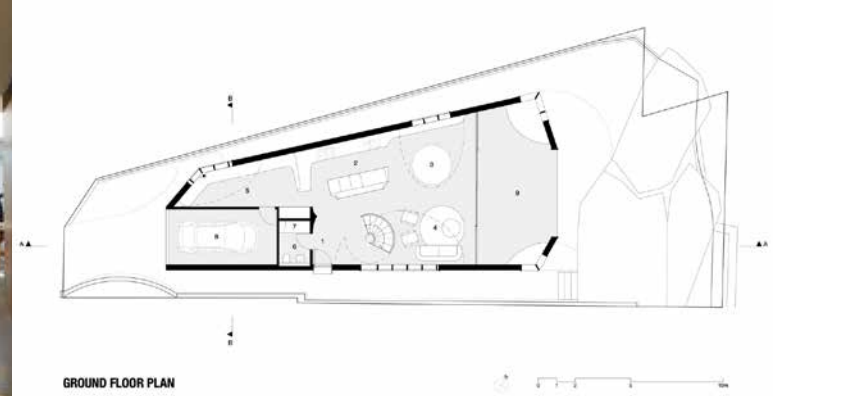
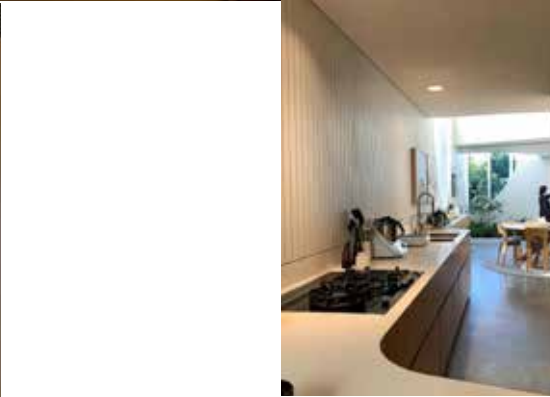


gadigal land/SYDNEY
DAY 06_
Adam Haddow's
APARTMENT & ERIC (HIS DOG)





gadigal land/SYDNEY
DAY 06_
Chen Chow Little
GLEBE HOUSE



GROUND FLOOR PLAN



The last leg of our Dulux Study tour was spent in the Northern Territory: two days in Darwin and two days in the Kakadu National Park. Both experiences were extremely moving – in Darwin we observed a kind of gloves-off approach to architecture, while in the Kakadu we witness Aboriginal community groups continuing to practice their culture on their country as they have done for thousands of years.

I found there was an honesty, a rawness, an acceptance of the human condition that defines the tropical architecture of Beni Burnett and Troppo Architects. Nothing is closeted or hidden away: in fact, even the walls don't quite go up to the ceiling. Fridges are not concealed in joinery, laundries spill out and over into carports and there isn't a glimpse of a butler's pantry, a powder room or a slab of Carrara marble to be seen.

garramilla/ DARWIN
DAY 10_ Troppo Architects
TROPPO OFFICE & TROPPOVILLE



It's a breath of un-air-conditioned fresh air. The architecture is colourful and quirky; there is something inclusive, flexible, accessible and responsible about Burnett's and Troppo's architecture that calls into question every "eco brass tap" I have specified and makes me wonder if, in a time of climate crisis and increasing homelessness, servicing the top five percent of the residential market is enough.

On our last day we visited the Ubirr rock art site in Kakadu National Park. The visit provided the perfect bookend to our first day of the tour which was spent exploring krakani lumi standing camp located in wukalina/Mt William National Park, Tasmania. From the bottom to the top and the start to the finish there was a poetic symmetry to our tour that spoke to a desire for a deeper understanding of place. From the outset, our tour had the unique opportunity to examine how country (land, sea and sky), culture, climate and community can conceptually challenge and perhaps even disrupt architecture. The tour shifted my thinking away from the objectification of architecture, away from buildings, that more often than not, sit intentionally at odds with their context, so desirous is their need to claim the spotlight, towards an architecture that sits quietly often in the back-ground, allowing for, accommodating and sheltering in the most elemental sense of the words.

