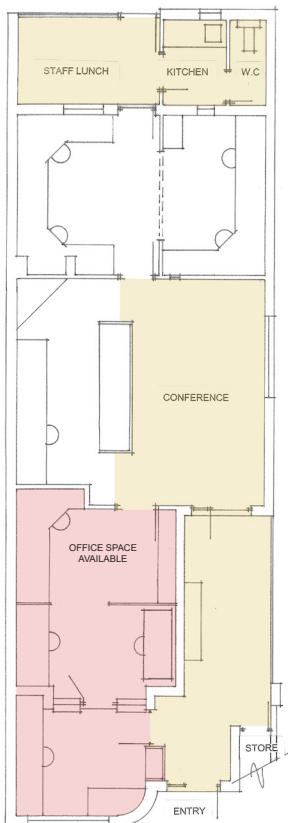


# CO-SHARE WORKSPACE AVAILABLE



A co-share workspace in Subiaco is available for lease...

The space is currently shared by 2 small architectural practices, nashandghersinich architects and interior designers and Maze Architects. There are extra spaces (**4 - 5 workstations**) suitable for a like-minded small practice or sole practitioners in architecture or other design related professions.



The office is fully fitted out with facilities including;

- Internet access
- Shared printer and photocopier
- Meeting room
- Kitchen
- Toilet
- Lunchroom
- 2 separate, onsite car bays available for lease



Our office is one of 4 strata offices within a delightful, fully renovated Federation / Art Deco building. Other businesses in the building include yet more architectural practices, a graphic design company and a recruitment agency. Close to public transport (bus and train), cycleways, a beautiful parkland and walking distance to cafes, restaurants, and bars in Subiaco and nearby West Leederville and West Perth. Overall, a great place to work!

Contact Derek Nash on **0402 792 066** for more information...