

CONNECTING TO A PLACELESS PLACE

Globalisation of key international cities has led to the suppression of ancestral cultural identities. These types of development have broken the physical link between people and land resulting in a placeless place. This loss in uniqueness of place leaves people feeling neglected and an overwhelming emotion of outsideness.

'A deep human need exists for associations with significant places. If we choose to ignore that need, and to allow the forces of placelessness to continue unchallenged, then the future can only hold an environment in which places simply do not matter'.

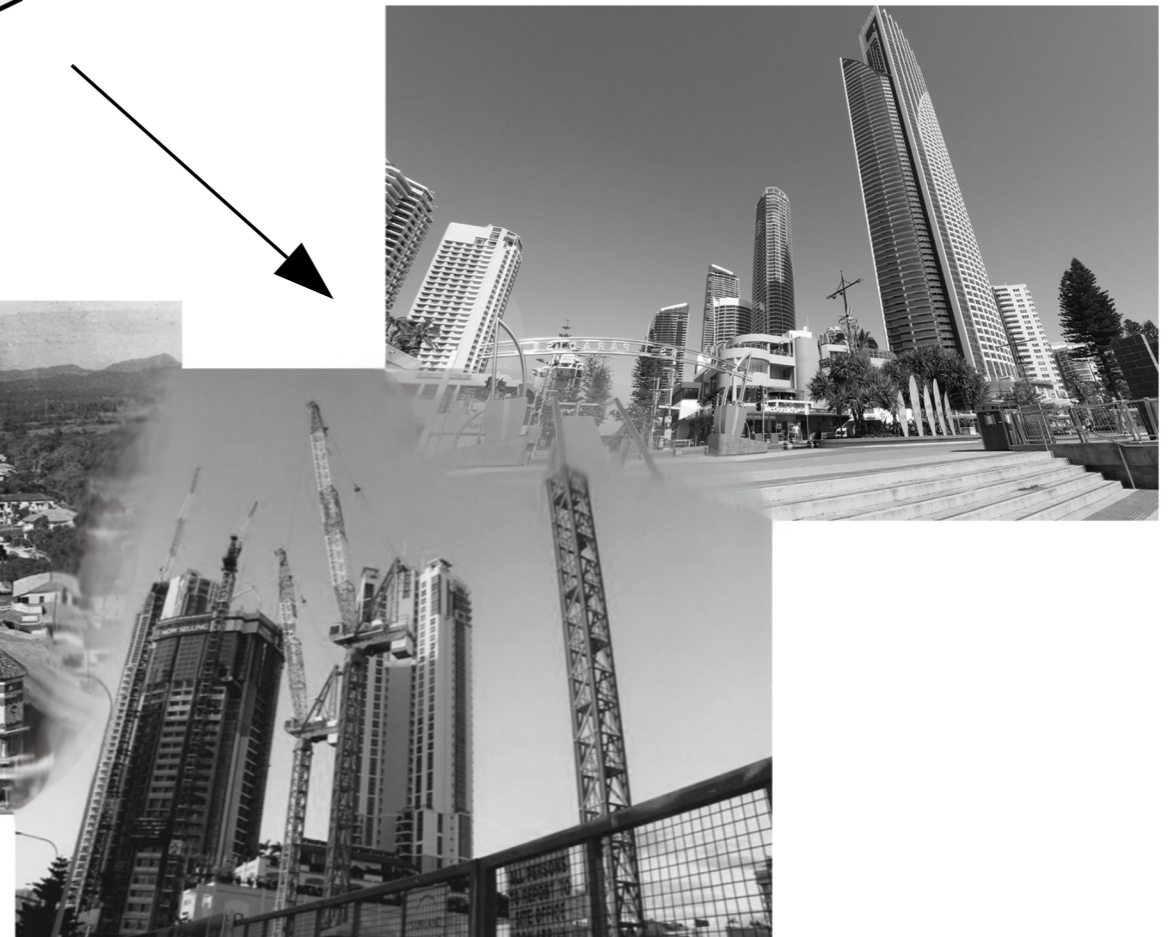
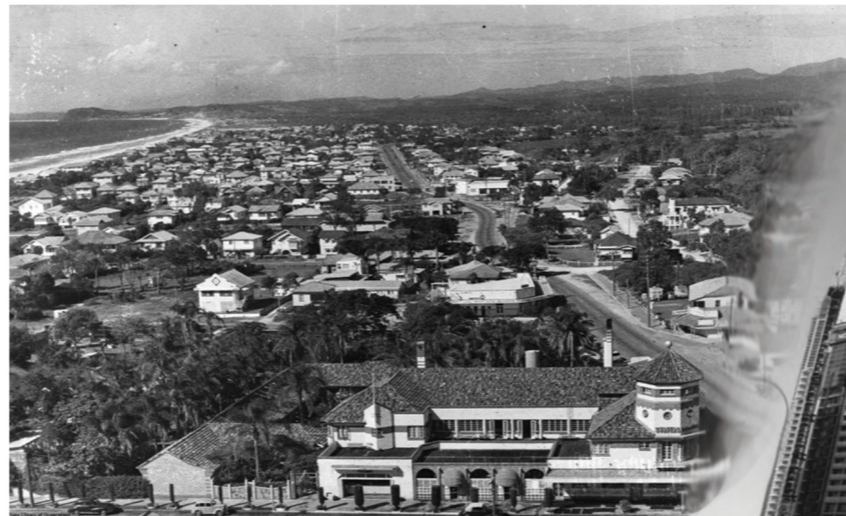
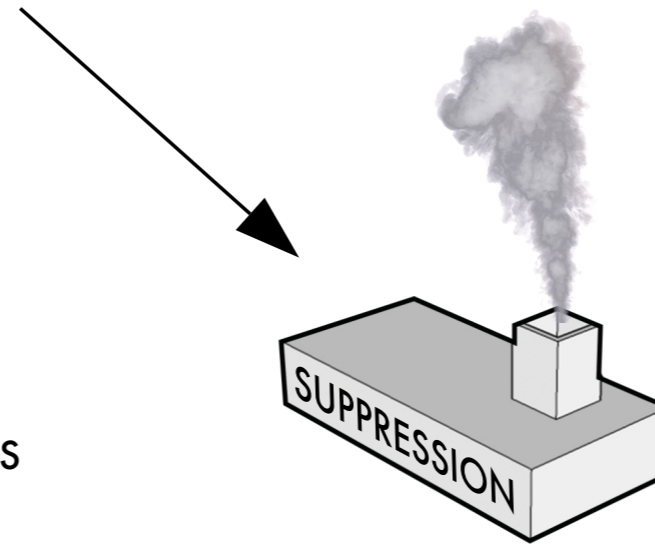
~ Edward Relph, 1976, Geographer

The Gold Coast, an internationally recognised city that thrives off international tourism is continually expanding new developments with very little regard for ancestral heritage. As the traditional custodians of the land, the Yugambeh people have been cast aside to make way for concrete and steel.

Celebration of the Yugambeh people through symbolic architectural story telling allows for a holistic feeling of insideness for all occupants either through direct existential insideness or empathetic insideness.

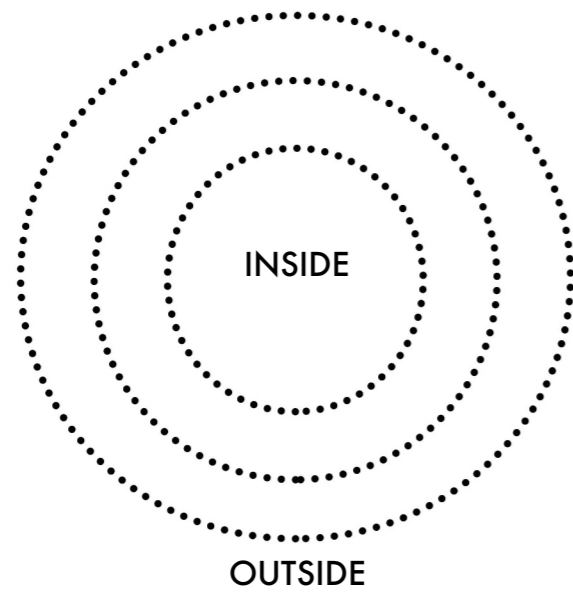


STRONG CONNECTION TO LAND AND NATURAL MATERIALS

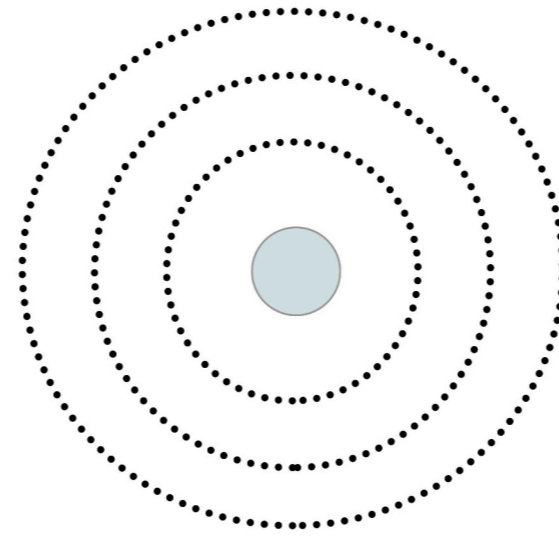


GLOBALISATION OF THE GOLD COAST INTO UNIFORM PLACELESS PLACE

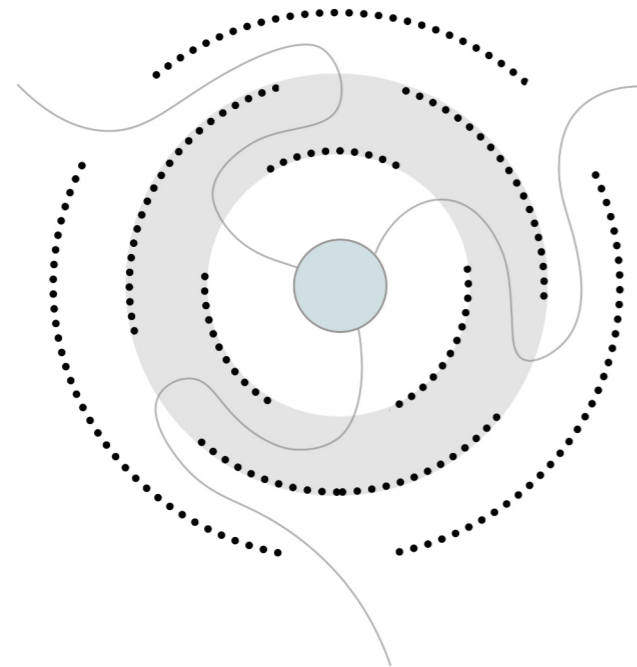
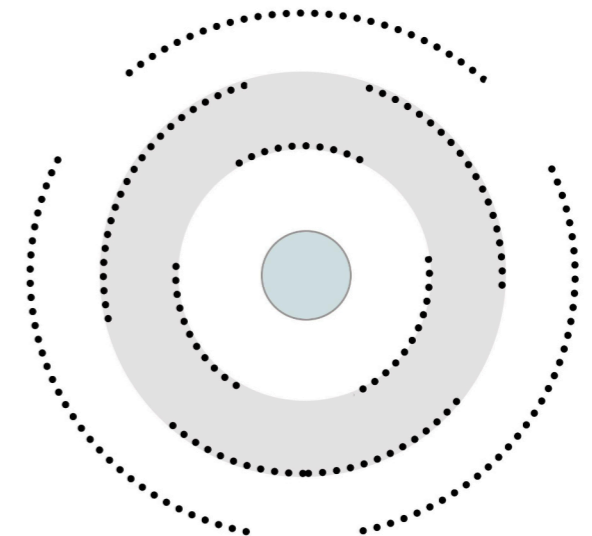
1. OUTSIDENESS VS INSIDENESS



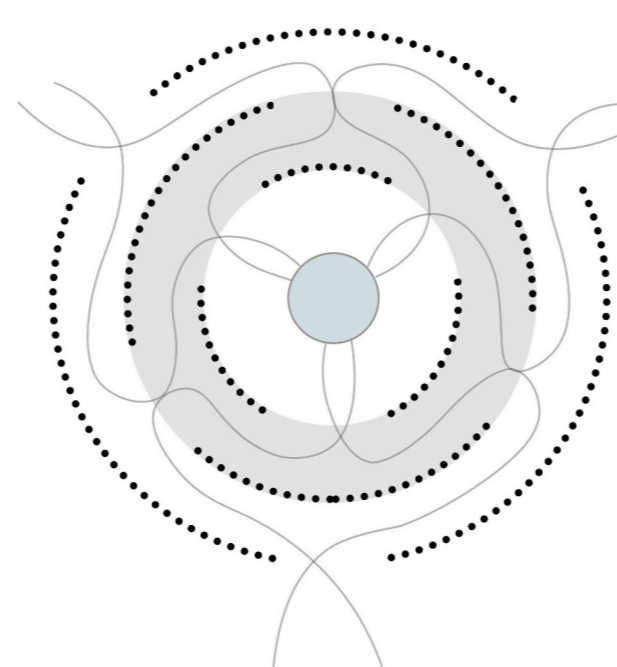
2. REFLECTION SPACE WITHIN



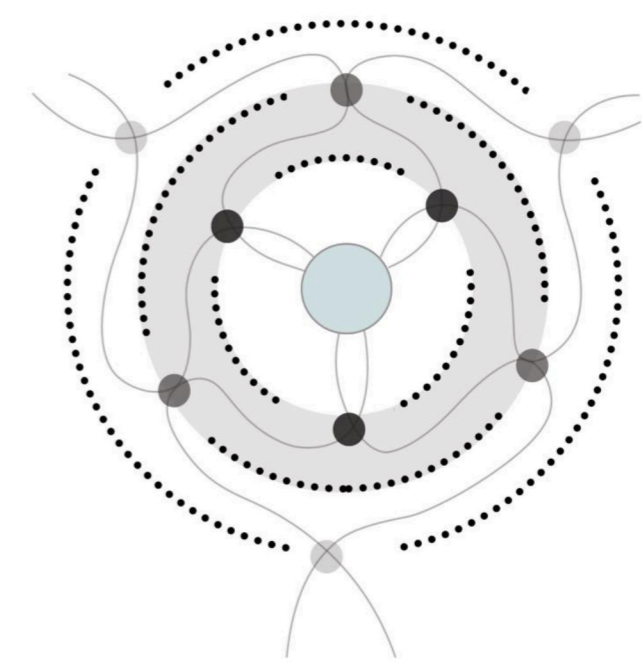
3. SUPPRESSED PAST THROUGH SHADOW



4. MAIN JOURNEY PATHS



5. WEAVING PATHS OF LONGEST JOURNEYS



6. INTERSECTING YARNING POINTS

