



31 May 2026

*****Embargoed until 10:00pm AEST Saturday 30 May*****

Tasmanian Architecture Awards Winners 2026

The State's Best New Architecture Unveiled

Tasmania's most outstanding new architecture has been revealed in the **Australian Institute of Architects' 2026 Tasmanian Architecture Awards**. The 31 awarded projects represent the cutting edge in architectural innovation from the state's sharpest design minds.

The winners for 2026 (detailed on the following pages of this media release) act as a roadmap to the new building projects that are shaping Tasmania's contemporary built environment. The Australian Institute of Architects is the country's peak body for architecture, and the Tasmanian Architecture Awards are the state's premier design awards.

Australian Institute of Architects 2026 Tasmanian Architecture Awards Jury Chair, Martin Stephenson, explained the commonalities in this year's award winners.

"The Australian Institute of Architects Tasmanian Architecture Awards recognise projects making significant contributions to Tasmania's built environment and community. Winners range from exceptional examples of complex adaptive reuse and reduced embodied carbon, to projects which are significant not for what is added but for what is removed — seeking meaningful and compelling truth-telling and reconciliation through subtraction and revelation," said Stephenson.

"Notable across many of the projects is the respect for existing buildings and a careful and restrained approach to conservation and integration of the new. Whether it be a significant civic building extension or a reinterpretation of the humble Tasmanian Shack, a clear theme of respect for physical and social history prevails in this year's entries and highlights what outstanding architecture can achieve."

Each year, the projects in the Tasmanian Architecture Awards shortlist are selected by an esteemed panel of industry experts and leaders. A comprehensive in-person, on-site judging process by the jury determines the eventual winners of the Awards, which were announced on Saturday, 30th May.

This year, the jury included:

- Martin Stephenson RAIA | Rosevear Stephenson (Jury Chair)
- Kate Symons RAIA | Studio Ilk Architecture & Interiors
- Maddie Sewell RAIA | Up to Something
- Felix Blackman RAIA | BE-Architects
- Dr Julian Worrall RAIA | University of Tasmania - Architecture & Design School

The 2026 Tasmanian Architecture Award Winners are as follows:

COMMERCIAL ARCHITECTURE

- **Tasmanian Chapter Colin Philp Award for Commercial Architecture**
Black Swan | Preston Lane

EDUCATIONAL ARCHITECTURE

- **Tasmanian Chapter Sydney Blythe Award for Educational Architecture**
The Forest | Woods Bagot
- **Tasmanian Chapter Educational Architecture Award**
Bowen Road Primary School | MANA Architects
- **Tasmanian Chapter Educational Architecture Commendation**
Cambridge Primary School | Bence Mulcahy



- **Tasmanian Chapter Educational Architecture Commendation**
Legana Primary School | Cumulus Studio

ENDURING

- **Tasmanian Chapter Enduring Architecture Award**
Dorney House at Fort Nelson | Esmond Dorney

HERITAGE

- **Tasmanian Chapter Roy Sharrington Smith Award for Heritage**
The Homestead Renewal at Wybalenna | Taylor and Hinds Architects with the Aboriginal Land Council of Tasmania

PUBLIC ARCHITECTURE

- **Tasmanian Chapter Alan C Walker Award for Public Architecture**
Albert Hall Renewal | TERROIR

RESIDENTIAL ARCHITECTURE - HOUSES (ALTERATIONS AND ADDITIONS)

- **Tasmanian Chapter Residential Architecture - Houses (Alterations & Additions) Award**
Balfour Terrace | Cumulus Studio
- **Tasmanian Chapter Residential Architecture - Houses (Alterations & Additions) Commendation**
Mount Stuart Greeny Flat | Bence Mulcahy
- **Tasmanian Chapter Residential Architecture - Houses (Alterations & Additions) Commendation**
Boa Vista | Licht Architecture
- **Tasmanian Chapter Residential Architecture - Houses (Alterations & Additions) Commendation**
Mid Century River Home | Maguire and Devine Architects

RESIDENTIAL ARCHITECTURE - HOUSES (NEW)

- **Tasmanian Chapter Esmond Dorney Award for Residential Architecture - Houses (New)**
Sandford | 1+2 Architecture
- **Tasmanian Chapter Residential Architecture - Houses New Award**
Spring Beach House | Scale Architecture
- **Tasmanian Chapter Residential Architecture - Houses New Commendation**
Flowerpot | TANNER
- **Tasmanian Chapter Residential Architecture - Houses New Commendation**
Isabel and Elsie | Christopher Clinton Architect with Core Collective Architects

RESIDENTIAL ARCHITECTURE - MULTIPLE HOUSING

- **Tasmanian Chapter Residential Architecture - Multiple Housing Award**
Queens Walk Housing | Cumulus Studio

SMALL PROJECT ARCHITECTURE

- **Tasmanian Chapter Peter Willmott Award for Small Project Architecture**
The Ablutions at Wybalenna | Taylor and Hinds Architects with the Aboriginal Land Council of Tasmania

COLORBOND® AWARD FOR STEEL ARCHITECTURE



- **Tasmanian Chapter COLORBOND Award for Steel Architecture Award**
The Ablutions at Wybalenna | Taylor and Hinds Architects with the Aboriginal Land Council of Tasmania

SUSTAINABLE ARCHITECTURE

- **Tasmanian Chapter Barry McNeill Award for Sustainable Architecture**
The Forest | Woods Bagot
- **Tasmanian Chapter Sustainable Architecture Award**
Isabel and Elsie | Christopher Clinton Architect with Core Collective Architects
- **Tasmanian Chapter Sustainable Architecture Commendation**
Mid Century River Home | Maguire and Devine Architects
- **Tasmanian Chapter Sustainable Architecture Commendation**
Spring Beach House | Scale Architecture
- **Tasmanian Chapter Sustainable Architecture Commendation**
Cambridge Primary School | Bence Mulcahy

CHAPTER SPECIFIC AWARDS

- **Tasmanian Chapter SWT Blythe Student Prize**
Jack Rose | The Archive
- **Tasmanian Chapter Emerging Architect Prize**
Guy Edwards | BE-Architects
- **Tasmanian Chapter EmAGN Project Award**
Albert Hall Renewal | TERROIR
- **Tasmanian Chapter Henry Hunter Triennial Prize**
Inveresk Library, University of Tasmania | Wardle
- **Tasmanian Chapter President's Prize**
Professor Rufus Black | Vice-Chancellor and President of the University of Tasmania
- **Tasmanian Chapter Tasmanian Architecture Medal**
The Ablutions at Wybalenna & The Homestead Renewal at Wybalenna | Taylor and Hinds Architects with the Aboriginal Land Council of Tasmania

-ENDS-



Tasmanian Chapter Colin Philp Award for Commercial Architecture

Black Swan | Preston Lane



The Black Swan is a modern tale of three brothers, an architect and two builders, who revive a long-lost Hobart corner. Originally a colonial public house, the building was destroyed by fire in 1835 and eroded by a century of unsympathetic ‘alterations’.

Black Swan advances adaptive reuse through a unified design approach, resolving a complex program while navigating heritage constraints and building compliance, all within a typically modest Tasmanian budget.

The architecture is precise and refined against backdrops of raw and often ragged material histories. A plinth of vertically laid reclaimed brick anchors light black steel window frames above. Reflective double glazing conceals the building by day and reveals its secrets by night. A double-height corner atrium opens generously, then guides visitors back into the colonial interiors, drawing them into the deeper, darker history of the old public house. Original re-pointed fireplaces and timber detailing reinforce this continuity.

Within the apartment, timber stairs, sagging with the weight of time, bend over a powder-coated, earthy steel substructure, while matching steel elements merge into red, dusted-brick walls.

It is both authentic and appropriate.

The Colin Philp Award recognises Black Swan as a model for the renewal of Tasmania’s commercial architectural heritage.



Tasmanian Chapter Sydney Blythe Award for Educational Architecture
The Forest | Woods Bagot



Ambitious, thoughtful and beloved by students, The Forest is a creative reimagining of what a university campus can be. Conceived as a sequence of spaces developed within existing built fabric, it brings together a diversity of learning environments with access to greenery, light and civic generosity.

Entry is through the iconic Robert Morris-Nunn glass dome atrium, which has been reactivated as a welcoming, landscaped anteroom. Existing heritage structures, including historic warehouses, are carefully revived and integrated with new interventions that bring new function to old buildings. The project's commitment to low-carbon construction sets a high benchmark for responsible design, with the integrity of these decisions resulting in tactile, robust spaces.

The jury was struck by the project's quality, comfort and resolution, despite its considerable complexity. The level of craftsmanship, coordination and thought stood out and brought delight and intimacy to a large-scale project.

When visiting, it is easy to see that The Forest is already well-used and well-loved. It supports a wide range of learning modes, from quiet focus to collaboration, while welcoming the broader community through generous public connections. Acoustic comfort and amenity were clearly successful as we observed hundreds of students working, collaborating, socialising and enjoying a space that felt theirs.



Tasmanian Chapter Educational Architecture Award
Bowen Road Primary School | MANA Architects



The Bowen Road Primary School General Learning Areas project by MANA is a clever exercise in turning site disruption into a civic opportunity. Arising from the loss of a building to fire, the project transcends simple replacement to capitalise on an under-utilised school quarter and successfully reorients it to embrace its streetscape and community. By pivoting the building's orientation, the architects have created new protected outdoor space to Bowen Road whilst enhancing the school entry and the eastern pre-existing playground. The building's form displays a sophisticated yet restrained sensitivity to context. A simple skillion roof presents a low street profile respectful of the scale of neighbouring heritage cottages, while rising to a scale appropriate to the site's original 1929 schoolhouse. This dialogue between eras is further enriched by a contemporary yet contextual material palette; Longford red bricks and white sheeting echo the original building and used with restrained precision. In contrast is a playful use of curved features that create "cloud-like" seating nooks at a delightful, child-friendly scale. Internally, the flexible learning environments are calm and legible. Transparency is used to foster collaboration and passive surveillance whilst block colour, acoustic treatments and lighting are deftly handled to provide a tranquil, sensory-informed environment for students and teachers alike.



Tasmanian Chapter Enduring Architecture Award
Dorney House at Fort Nelson | Esmond Dorney



JH Esmond Dorney (1906-1991) designed and built three houses embedded in the gun emplacements of the 1904 harbour defences at Fort Nelson, Hobart. The first house, which was constructed on the southern emplacement in 1949, provided the genesis of ideas that were continuously explored and expanded over the next 30 years. A second house was constructed in 1966 on the northern emplacement. This grander three-storey structure, with Esmond's office on the upper floor burned down in 1976, and at the age of 72 Dorney constructed a third house in 1979-80. This is the only Tasmanian building listed on the Docomomo Australia Register of Buildings.

Dorney explored the idea of the house as a functional dwelling connected to its site, through inventive and expressive architecture. The Fort Nelson House erodes traditional relationships between functional activities and between inside and outside, creating specific relationships to the broader landscape in which it is located. Internal spaces are defined by level changes, with a central sunken conversation pit and fireplace providing a focus for social interaction.

The house and surrounding 35 acres were acquired by the City of Hobart in 2006, and the versatility of the unique spaces has allowed it to be used as a dynamic and dramatic setting for a range of cultural and community events over the last 20 years.



Tasmanian Chapter Roy Sharrington Smith Award for Heritage

The Homestead Renewal at Wybalenna | Taylor and Hinds Architects with the Aboriginal Land Council of Tasmania



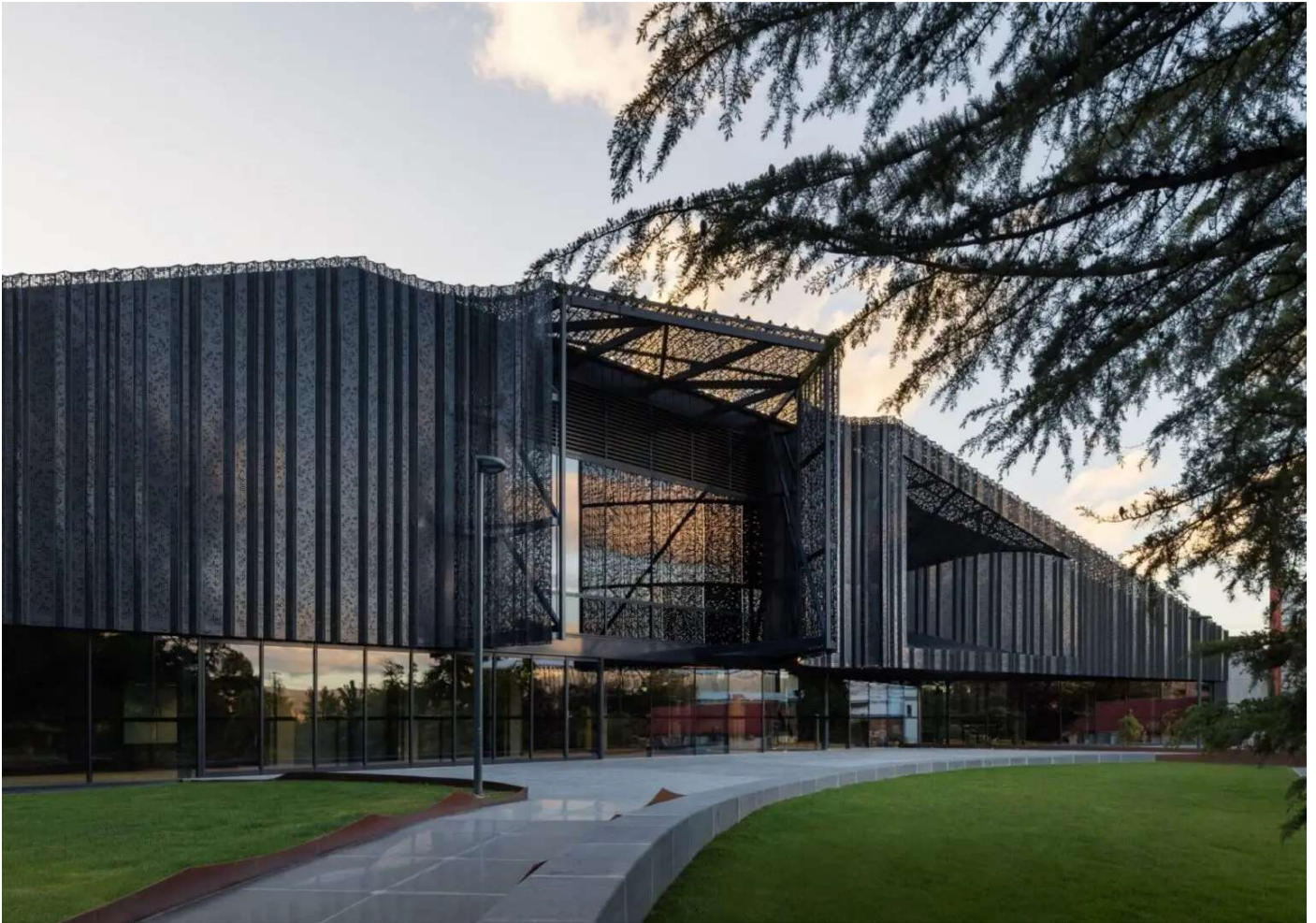
Wybalenna, on Flinders Island in the Bass Strait, is a site of genocide. It is the place to which the Indigenous survivors from the Black War of 1824-32 were systematically rounded up, transported, incarcerated, and left to die. Forty thousand years of an unbroken culture came to a grim terminus in unmarked graves on a windswept field. It is a haunted place.

Heritage, at its core, is concerned with how the past is connected to and revalued in the present. At the homestead at Wybalenna, this is achieved through 'unbuilding' – the removal of plaster and wallboard; stabilisation of underlying brick and timber; sleeving in the basic infrastructure of storage and ablutions noble in craft and material, to support temporary reoccupation. It is a painstaking unpicking of the Master's house, directed by those who once were his prisoners.

In the stripping back of the original building, trauma is both re-enacted and exorcised. In removing the colonial layers to reveal the bricks that once confined the original people of lutruwita Tasmania, a direct human connection is reinstated across a gulf of pain and time through architecture. In awarding the named award in this category, the Jury seeks to acclaim an approach to heritage not as preservation, but as reclamation and redemption.



Tasmanian Chapter Alan C Walker Award for Public Architecture
Albert Hall Renewal | TERROIR



This Albert Hall Renewal is a skilled act of architectural diplomacy that boldly navigates the threshold between Launceston's premier civic venue and the much-loved classical landscape of City Park. It re-establishes a civic unity last seen when the Albert Hall once sat alongside a series of temporary pavilions built for the Industrial Exhibition in the 1890s, and the architects have resolved a century-long urban disjunction with complex sensitivity. The project's success lies in the use of shadow as a metaphor to define its existence between the Hall and the Park. On face value, it is a shadow-like presence, but on another layer, the new foyer acts as an amorphous and porous intermediary to avoid competing with the Hall's historic fabric. Dappled light from the perforated screens—evocative of the park's tree canopy and historic wrought-iron structures—creates an atmospheric interior that feels mysterious and ephemeral yet familiar and contextual. The manipulation of the ground plane "gathers up" the park's network of pathways, pulling the landscape into the foyer whilst creating an accessible public terrace and entrance that was previously lacking. Working within limited space and stringent heritage constraints, the design maintains deference to the Hall's scale while providing the spatial flexibility and modern amenity required for a contemporary cultural destination.



Tasmanian Chapter Residential Architecture - Houses (Alterations & Additions) Award
Balfour Terrace | Cumulus Studio



Balfour Terrace is a clever and restrained reconfiguration of the existing footprint, using thoughtful planning, intersecting internal volumes and curated views to create a deeply functional family home with generous spaces for gathering, cooking, dining and everyday life.

A single decisive architectural move, supported by internal reconfigurations, transforms a house into a coherent, generous home that restores ease, connection, and belonging.

The integrity of the early 19th-century house is carefully held with minimal intervention. New insertions are light-filled and volumetric, slipping gently within the original fabric without overwhelming it, and with no increase in footprint.

Set quietly within its streetscape, the addition is restrained and legible, responding to the existing building while clearly expressing its internal order. Carbon-neutral, low-maintenance materials define the exterior, with timber deployed intentionally, including vaulted forms to the new kitchen and dining space.

Modesty, scale and restraint underpin the work. Internally, a layered material palette introduces warmth, tactility, spaces for calm, and unexpected moments of joy that subtly enrich daily life.

Balfour Terrace is a precise exercise in spatial clarity and care—an architectural idea distilled into a grounded, enduring family home that gently transforms how it is lived, felt, and shared.



Tasmanian Chapter Esmond Dorney Award for Residential Architecture - Houses (New)
Sandford | 1+2 Architecture



Sandford carries a century of family memory. Generations have built and rebuilt shacks on this site, each iteration shaped through material reclamation. The new house does not subjugate itself to the informality of the Tasmanian shack. Instead, the architect develops a clear architectural idea, organising the home as a series of smaller built forms that respond to the unique brief of clients who bring their lived experience to the table.

Rather than a single dwelling beneath one roof, the house is arranged around a sheltered north-facing verandah. Moving between rooms requires stepping outside. You feel the weather, hear the sea, and glimpse the headland. The house invites engagement with these elements, while also providing refuge. Unlike the leaky shacks of the past, it offers shelter and comfort, carefully framing aspect and outlook.

A plinth of bricks gathered across decades grounds lighter forms in timber and Zinalume, drawing on a vernacular tradition rather than mimicking its luxury. The jury was delighted by the many small surprises throughout, including a sliding window behind the kitchen that opens onto a semi-commercial servery. Even on the coldest days, the house feels warm and full of light.

What the architects have achieved is understated and remarkable. They have assembled the values, materials, and rhythms of the older shacks into a house that belongs to its own time, acknowledging nostalgia while resolving a clear and coherent architectural expression.

Sandford is a thoughtful continuation of a family connection to this place, and a deserving recipient of the Esmond Dorney Award.



Tasmanian Chapter Residential Architecture - Houses New Award
Spring Beach House | Scale Architecture



Spring Beach House is a comfortable and unfussy coastal dwelling that embodies the idea of doing more with less. Its' simple architecture and gabled roof feel both designed and at home with the surrounding 'shacky' shacks. Lightly elevated within the scrub, it sits in the landscape with ease, its silvering timber and Zinalume roof helping it to belong.

The planning is compact and highly resolved within a 100 square-metre footprint. A small vestibule mediates arrival before opening to a vaulted living space, drawing in light, sky and distant views into living areas. Bedrooms and bathrooms are arranged to provide privacy and flexibility for two families at once, while other nooks cleverly provide opportunities for small children and guests.

Material choices are robust and purposeful, selected to age gracefully and minimise impact. Standard timber construction and careful detailing respond intelligently to budget and remoteness, reducing complexity without sacrificing quality.

The house offers warmth, comfort and moments of delight, from inviting window seats to a playful mezzanine. Even on a cold and rainy day, it felt sunny inside the Spring Beach House, and the jury commends the resolution and effort that makes this simple project so special.



Tasmanian Chapter Residential Architecture - Multiple Housing Award
Queens Walk Housing | Cumulus Studio



Queens Walk Housing is an exemplary and ambitious large-scale social housing development, skilfully navigating complex site, contextual, and heritage constraints to deliver a generous and uplifting residential environment. It responds with clarity and quiet confidence to its setting, grounding itself firmly in the landscape through a strong spatial framework and a robust, materially expressive architecture.

The project acknowledges the site's layered heritage references, reinterpreted through subtle, playful variations that bring nuance to new insertions. Core architectural intent is consistently resolved: generous open-air corridors draw light and air through the building, finely articulated tiled facades establish rhythm and texture, and emphasis on the ground plane fosters immediacy and connection, with natural light and cross-ventilation placing resident wellbeing at the centre.

Working with Realm Studio, the landscape and accessibility strategy extends architecture into a unified ground condition. Spatial generosity, durable materials, and modulated thresholds strengthen the relationship between building and landscape, while reactivated gardens and enhanced shared amenity enrich daily life and encourage encounter and exchange.

Well received by occupants, Queens Walk Housing establishes a compelling and quietly confident benchmark for social and community housing—one that elevates expectation and signals a more generous, humane, and enduring future for this essential typology.



Tasmanian Chapter Peter Willmott Award for Small Project Architecture

The Ablutions at Wybalenna | Taylor and Hinds Architects with the Aboriginal Land Council of Tasmania



In a category often defined by clever utility, The Ablutions at Wybalenna transcends its functional brief—to provide basic amenities—by becoming an architectural manifestation of resilience and endurance of the palawa people. Taylor and Hinds have navigated the immense weight of Wybalenna’s history with profound sensitivity, delivering a structure that is both materially meaningful and culturally resonant. Form-making references traditional patterns of circular and curved scarification, whilst the use of Coreten steel echoes the use of ochre; a material denied to the Aborigines exiled at Wybalenna and replaced with mutton fat and the rust from convict farming implements to maintain their ceremonial obligations. This is architecture as an act of service and reconciliation; it is a pro-bono gift of design and construction that provides a simple function but with extraordinary meaning. The words of the CEO of Aboriginal Land Council of Tasmania, Rebecca Digney, express it best: “To sit with us and hear our stories, and hear people talk openly about things, and then create architecture that breathes life into those feelings and emotions, is incredible to witness. It is like magic.”



Tasmanian Chapter COLORBOND® Award for Steel Architecture Award

The Ablutions at Wybalenna | Taylor and Hinds Architects with the Aboriginal Land Council of Tasmania



For The Ablutions at Wybalenna, steel is not just a structural and functional choice; it is a medium selected for a symbolic and contextual dialogue. This project receives the COLORBOND® Steel Award for its exceptional use of material to articulate a narrative of resilience and survival. The choice of Corten steel throughout serves as a direct, visceral link to the history of the site, where the exiled palawa people, denied their traditional ochre, used mutton fat and the rust from convict farming implements to maintain their ceremonial obligations.

The execution of the pavilion demonstrates technical rigour through its prefabricated assembly and lean, expressive detailing. The rounded steel walls reference circular and curved scarification traditional practices of the Tasmanian Aborigines and cleverly provide cladding, structure, and experience in one. Designed to weather and patinate in harmony with the coastal environment, the structure is designed to endure and be easily maintained. By utilising donated steel to create a structure of such poetic and permanent quality, the project illustrates the power of materiality to tell truths that words often cannot.



Tasmanian Chapter Barry McNeill Award for Sustainable Architecture
The Forest | Woods Bagot



The Forest demonstrates a deeply embedded commitment to sustainability, showing meaningful effort in incorporating low-carbon decision making at every stage of the design and delivery. Working with what already existed, the design prioritises adaptive reuse, significantly reducing the need for new construction while extending the life of significant buildings.

A rigorous lifecycle assessment informed key decisions throughout, guiding the selection of materials and systems. The result is a project that substantially outperforms typical benchmarks, achieving a remarkable reduction in both upfront and embodied carbon. These outcomes are not only technical achievements but are expressed in the character of the building itself, through the warmth and tactility of natural materials like timber, bricks and hemp.

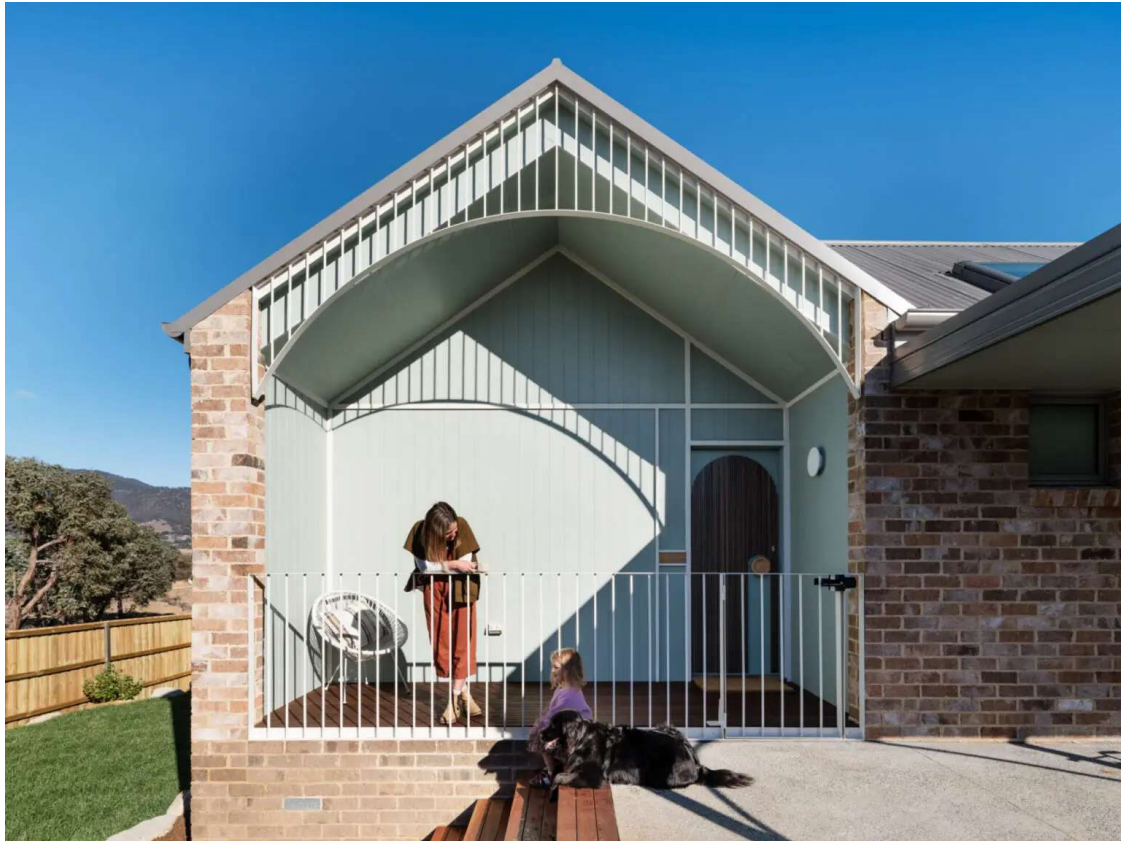
The project embraces circular economy principles with integrity and visual legibility - a feature the jury loved to see as a key design principle in a learning space. Materials are used thoughtfully rather than decoratively, with many elements designed for disassembly and future reuse. Considerable effort by the Woods Bagot team was put into innovation, including scaling the credentials and usability of hempcrete in commercial applications by pursuing additional testing.

The Forest is an inspiring demonstration of how architecture can respond to the urgency of climate action, balancing performance, adaptability and felt experience. It sets a confident benchmark for a new generation of low-carbon, resource-conscious buildings.



Tasmanian Chapter Sustainable Architecture Award

Isabel and Elsie | Christopher Clinton Architect with Core Collective Architects



True sustainability encompasses more than environmental factors; it includes social and economic dimensions and, in expansive formulations, extends to incorporate cultural aspects too. Isabel and Elsie is awarded a sustainability award for an expansive understanding of what makes a project sustainable.

In offering spaces for women escaping domestic violence, the project's very purpose supports the social foundations of a sustainable community - safe, respectful, and nurturing relationships. Efficient interior planning and built-ins, such as a daybed that doubles as a guest sleeping nook, afford the flexible occupancy patterns to accommodate complex families or extended social support networks. By providing the material substrate for autonomy, this project also supports the economic sustainability of the women that it seeks to serve.

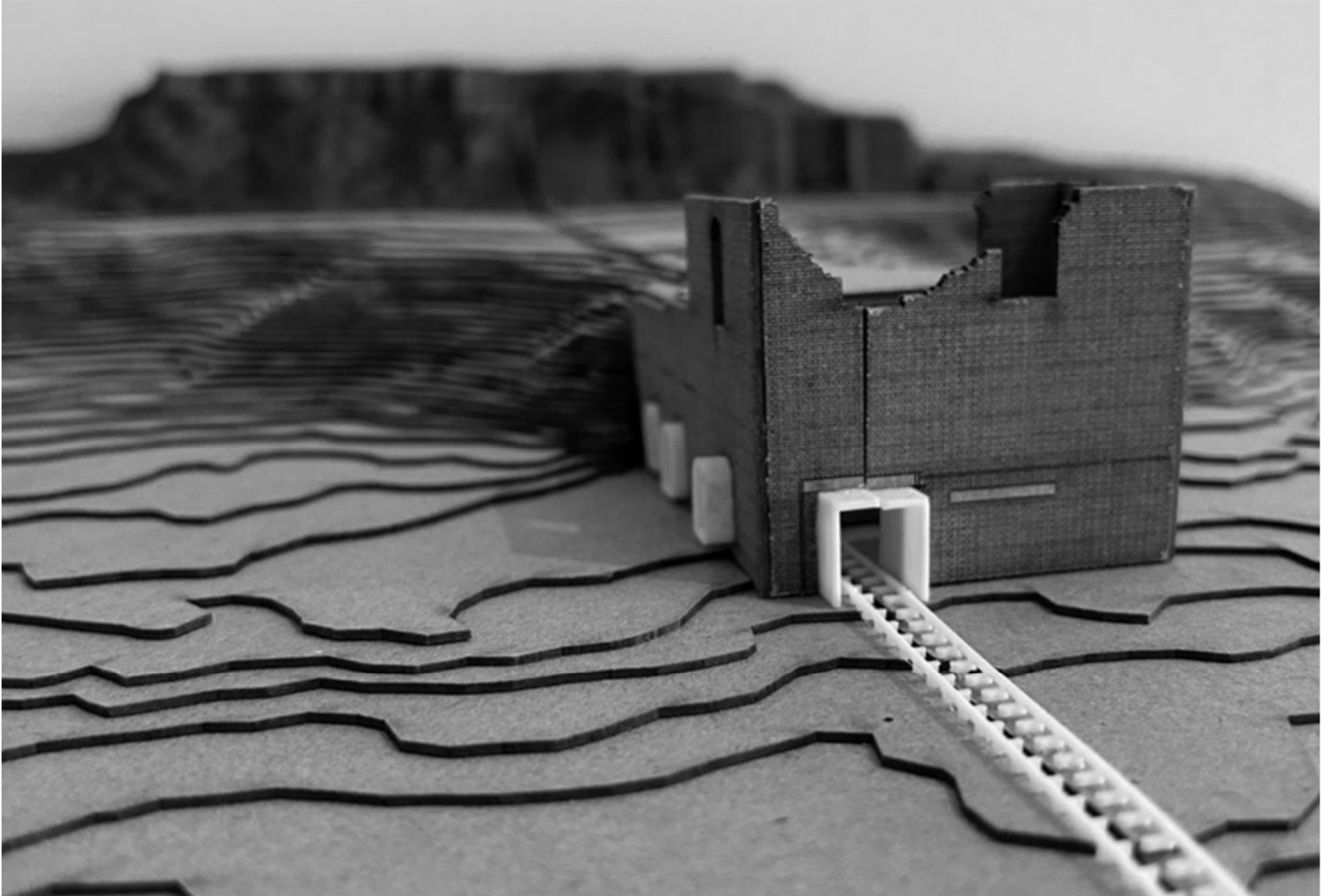
In environmental terms, the provision of small-footprint, modestly scaled, L-shaped dwellings maximises the benefits from limited resources, leaves space for a sheltered, low-maintenance garden, and keeps environmental impact low. Materials are durable and economical: carbon-neutral bricks, plywood wall linings. Solar arrays and rainwater tanks harvest energy and water.

Every effort counts; each sustainable house is important. But by developing this as a prototype for future replication, the project multiplies its potential for positive contribution. Sustainability becomes systemic rather than symbolic.



Tasmanian Chapter SWT Blythe Student Prize

Jack Rose | The Archive: Architecture in Slow Collapse



The Archive: Architecture in Slow Collapse – Tracing Entropy on Wukaluwikiwayna is a poetic and rigorously resolved exploration of decay as continuity rather than loss. Set on Maria Island, the project embraces entropy as both subject and method, proposing architecture not as resistance to time, but as its careful witness.

The project operates simultaneously as heritage record, adaptive reuse, and speculative future ruin. Existing brick fabric is neither restored nor erased; instead, it is allowed to weather, fragment, and endure. Across 10 and 200 years, the drawings trace a slow collapse, while a growing underground archive forms a physical timeline of the island's entropy.

Subtle in touch yet gently radical in intent, the proposal reinforces the value of existing built fabric for new uses. Sectional investigations and material detailing reveal a layered and highly considered response — evocative in atmosphere, yet grounded in tectonic clarity.

The Archive offers a compelling study of care in architecture: building less, listening more, and allowing decline to generate meaning. For its conceptual depth, narrative strength, and mature architectural resolution, Jack's project is a deserving recipient of the SWT Student Prize.



Tasmanian Chapter Emerging Architect Prize

Guy Edwards | BE-Architects



Guy Edwards is a highly accomplished emerging architect whose work and study balance design excellence, intellectual rigour, and a strong sense of social responsibility. He consistently advocates for architecture's capacity to improve our built environment and has demonstrated an ability to integrate diverse stages of the architectural process across a wide range of projects, resulting in outcomes that are contextual, responsive, and socially aware.

As project architect at Liminal Studio, Guy was fundamental to the design and delivery of Youth 2 Independence Campbell Street, a project that repositions social housing for young adults and demonstrates that generous, joyful, and spatially diverse housing can positively impact the urban environment. The project redefines expectations for social housing in Tasmania, setting a new standard for how architecture can foster dignity and opportunity.

Guy's leadership and design sensitivity were central to translating this ambition into a built outcome that has influenced current thinking in community housing design. The architecture empowers residents to feel they deserve well-designed environments and the opportunity for a better future. This innovative project received the Ray Heffernan Award for Residential Architecture – Multiple Housing in the 2024 Tasmanian Architecture Awards.

An active participant within the Tasmanian Chapter of the Australian Institute of Architects, Guy now serves as a Chapter Councillor, and a member the Significant Architecture Task Group. Guy continues to advocate for design excellence through his involvement in state housing policy and local authority medium-density design guidelines. He has been a generous mentor to graduate architects at Liminal Studio and contributes to architectural education as a tutor and guest critic at the University of Tasmania.

Bringing critical thinking, unwavering commitment, and genuine care to every project, Guy is dedicated to shaping equitable and sustainable spaces. His thoughtful approach and advocacy for design-led policy mark him as an emerging



Australian
Institute of
Architects

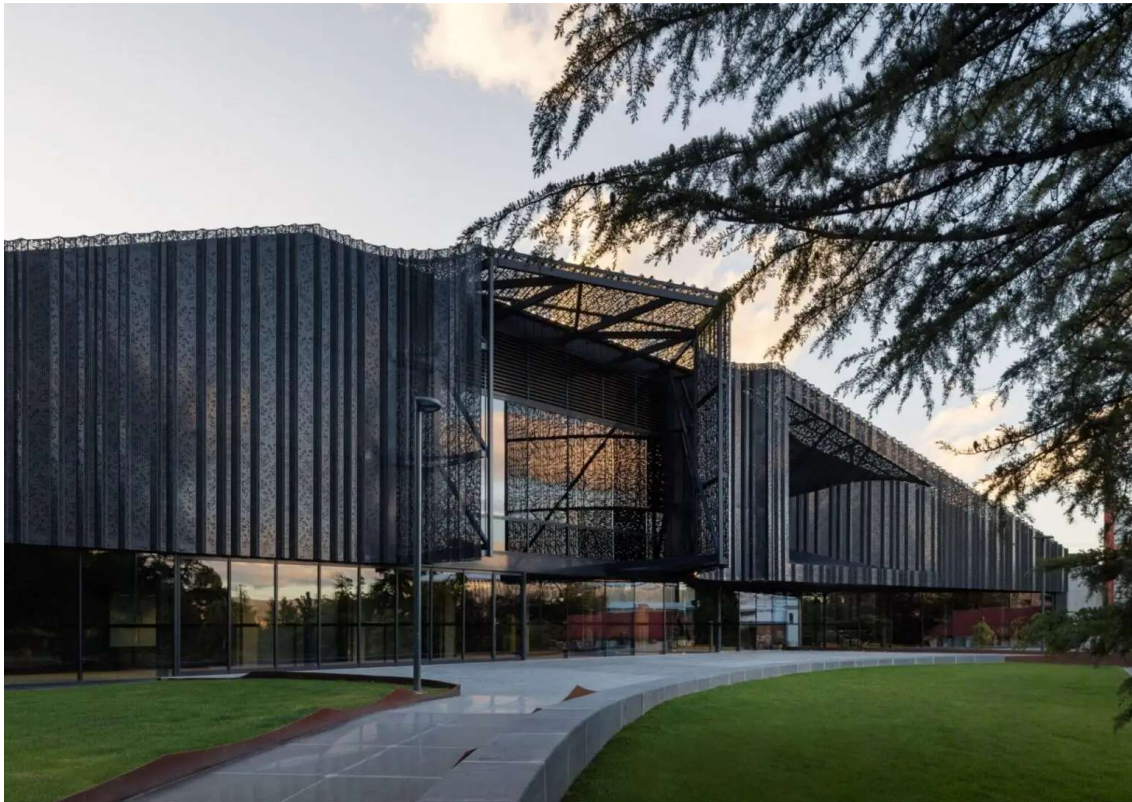
**MEDIA
RELEASE**

leader whose impact will continue to shape the profession in the years ahead. He is a worthy recipient of the 2026 Tasmanian Emerging Architect Prize.



Tasmanian Chapter EmAGN Project Award

Albert Hall Renewal | TERROIR



TERROIR's Albert Hall Renewal is an exemplary work of precision and civic generosity, distinguished by the pivotal role of EmAGN leadership in realising its full potential. Positioned as a threshold between Albert Hall and City Park, the project transforms a long-unresolved edge into a richly atmospheric public realm.

Central to the project's success is the sustained leadership of Emily Slevin as Project Lead. Over five years, she guided a complex, multi-stakeholder public project through sensitive heritage constraints, coordinating a 27-discipline consultant team while maintaining a strong architectural vision with clarity and optimism. Emily's progression from Associate to Senior Associate to Principal over the life of the project reflects the depth of her contribution and TERROIR's commitment to nurturing emerging leadership. Equally significant is the culture of mentorship and collaboration fostered throughout the project, with a substantial EmAGN cohort contributing across design and delivery. The resulting architecture is conceptually rigorous and finely resolved; deferential yet transformative, it strengthens the relationship between hall and park through a careful orchestration of ground, form, and light. The alignment between opportunity, authorship, and built outcome is embodied in the work itself, making the Albert Hall Renewal a highly deserving recipient of the EmAGN Project Award.



Tasmanian Chapter Henry Hunter Triennial Prize
Inveresk Library, University of Tasmania, Wardle



The jury awards this honour to a project that achieves a remarkable balance between community, culture, and sustainability. The Inveresk Library demonstrates a clarity of purpose and a generosity of spirit, offering a civic place that is both welcoming and deeply attuned to its context. Through thoughtful scale, intuitive accessibility, and a flexible spatial framework, the building supports a wide spectrum of users — from individuals seeking quiet study to small groups and larger community gatherings — reinforcing its role as an inclusive social and academic hub.

Wardle's meaningful engagement with place is evident in the project's materiality, form, and careful response to the Inveresk precinct. The design integrates art and cultural narratives with sensitivity and purpose, most notably through the incorporation of Caleb Nichols-Mansell's artwork within the custom carpet design, embedding Indigenous stories and connections into the everyday experience of the building.

A strong environmental agenda underpins the project, with the successful use of CLT and mass timber construction contributing to both sustainability and a warm, tactile interior character. The result is a work of architecture that is rigorous yet inviting, contextually grounded yet forward-looking. It stands as a significant contribution to the University of Tasmania's evolving campus and a benchmark for contemporary public architecture in the state.



Tasmanian Chapter President's Prize

Professor Rufus Black | Vice-Chancellor and President of the University of Tasmania



The 2026 President's Prize recognizes an individual who has made a significant contribution to the architecture profession in Tasmania through collaboration, mentorship and advocacy.

As Vice-Chancellor of the University of Tasmania, Professor Black has demonstrated a strong commitment to the role of universities as civic institutions, with a clear focus on impact, place and community. Central to this has been his recognition of the value of architecture and the built environment in shaping Tasmania's future; championing architectural education, fostering design discourse, and supporting the discipline's contribution to the state's cultural, social and economic life.

Over recent years, this commitment has been reflected in the highly awarded redevelopments and expansion of the University of Tasmania's campuses across the state, including the North West campus, the Inveresk campus in Launceston, and more recently new buildings in Hobart, including 'The Forest'. These projects are more than academic facilities; they are city making institutions that contribute to the life, identity and vitality of their communities.

Across these developments, there has been a consistent emphasis on sustainability, carbon reduction and circularity, alongside a careful consideration of each building's relationship to its site and to its occupants. Under Professor Black's watchful eye, projects have been shaped through rigorous critique, a collaborative approach and a generosity of engagement that has consistently drawn more from both project teams and outcomes. This dialogue between architects and client has elevated the quality and ambition of the work, demonstrating the value of thoughtful leadership in the creation of meaningful public architecture.

In recognition of his leadership and his contribution to advancing the value of architecture and the built environment in Tasmania, the Tasmanian Chapter of the Australian Institute of Architects is pleased to award the Tasmanian President's Prize to Professor Rufus Black, presented by Tasmanian Chapter President Daniel Lane.



Tasmanian Chapter Tasmanian Architecture Medal

The Ablutions at Wybalenna & The Homestead Renewal at Wybalenna | Taylor and Hinds Architects with the Aboriginal Land Council of Tasmania



For too many nations, there is a place where the traumas of history congeal as architecture. For lutruwita/Tasmania, that place is Wybalenna, site of the colonial internment of Aboriginal Tasmanians – an Australian genocide.¹

Two architectural acts have been made on this haunted ground: an unbuilding and a building.

The old Homestead has been unbuilt, its layers of colonial occupation peeled away, disinterring the timber bones and brick flesh of the building. Minimal insertions, made of raw and noble materials, are sleeved into the remnant spaces. This is architecture as excavation, a taking away in order to give back, making space for remembrance, reclamation and reoccupation.

The Ablutions, most humble of functions, enacts the counterpoint: building. This simple raised pavilion, built entirely of oxidised steel, has the bearing of a delicate monument. With ochre colour and rounded forms, the structure evokes the skin of ancestors adorned by ceremony and ritual. Its precise geometries bear time, like an ancient shell washed up from the depths.

Together, these interventions enact a quiet manifesto of architecture's profound duty and promise. To give the past presence. To make the future tangible. To connect one another. To bear meaning and to heal trauma. They create a new foundation for this sacred place.

For all these reasons, the jury awards the Tasmanian Architecture Medal to Taylor & Hinds with the Aboriginal Land Council of Tasmania for the Homestead and Ablutions at Wybalenna.

¹ Wybalenna Aboriginal Mission was explicitly referenced by the Polish-Jewish lawyer Raphael Lemkin during the post-war establishment of the UN Genocide Convention.