

WA
ARCHITECTURE
AWARDS
2022



National
Architecture
Awards

CITY OF FREMANTLE
WALYALUP CIVIC CENTRE



Australian
Institute of
Architects

WA ARCHITECTURE AWARDS 2022

CONTENTS

WA

ARCHITECTURE

AWARDS

4	FROM THE WA CHAPTER PRESIDENT	40	INTERIOR ARCHITECTURE
5	FROM THE JURY CHAIR	48	PUBLIC ARCHITECTURE
6	2022 JURY	54	RESIDENTIAL ARCHITECTURE – HOUSES (ALTERATIONS AND ADDITIONS)
8	THE GEORGE TEMPLE POOLE AWARD	58	RESIDENTIAL ARCHITECTURE – HOUSES (NEW)
10	THE BRIAN KIDD ENABLING ARCHITECTURE PRIZE	66	RESIDENTIAL ARCHITECTURE – MULTIPLE HOUSING
14	COLORBOND® AWARD FOR STEEL ARCHITECTURE	72	SMALL PROJECT ARCHITECTURE
18	COMMERCIAL ARCHITECTURE	76	SUSTAINABLE ARCHITECTURE
28	EDUCATIONAL ARCHITECTURE	78	THE MONDOLUCE LIGHTING AWARD
34	THE EMAGN PROJECT AWARD	82	URBAN DESIGN
36	ENDURING ARCHITECTURE	86	EMERGING ARCHITECT PRIZE
38	AWARD FOR HERITAGE		

COVER IMAGE: WALYALUP CIVIC CENTRE | GEORGE TEMPLE POOLE AWARD | KERRY HILL ARCHITECTS (KHA)
PHOTOGRAPHER: NICHOLAS PUTRASIA

THE AUSTRALIAN INSTITUTE OF ARCHITECTS THANKS THE PARTNERS OF THE 2022 WA CHAPTER ARCHITECTURE AWARDS.

MAJOR NATIONAL PARTNERS



NATIONAL CORPORATE PARTNERS



NATIONAL INSURANCE PARTNER



NATIONAL MEDIA PARTNER



WA CHAPTER PARTNERS



FROM THE WA CHAPTER PRESIDENT



SANDY ANGHIE RAIA
WA CHAPTER PRESIDENT

Thank you to everyone who entered this year’s WA Architecture Awards – and thank you also to everyone who tuned in to watch the Awards, to support their colleagues and our profession.

As always, this year’s Awards showcase the incredible contribution that West Australian architects make in shaping our city and state – with a diverse range of innovative projects across the award categories.

From reimagined public places and spaces, to environment-responsive homes, and state-of-the-art education precincts, the entrants show a commitment to sustainability and the community.

With the built environment accounting for about 39% of global emissions, in building construction and operation, architects have a significant role to play in emissions reduction targets. We are seeing architects actively committing to carbon neutral practices and the Institute has embarked on its own carbon neutral journey.

But it’s important to remember that architects also play a part in the social and economic sustainability of our cities and regions.

The past two years have been unprecedented with the global pandemic changing how we live and work – possibly forever. While homes have become places of work for many, some offices are starting to look more like homes,

as organisations work hard to entice people out of the suburbs and back to our deserted urban centres.

Each year we honour projects that focus on community and people as much as they do design, so in this spirit – I’m pleased to announce a new prize this year – The Brian Kidd Enabling Architecture Prize.

This new prize is named in honour of Brian James Kidd AM, a highly respected architect, teacher and access consultant. Brian was tireless in his campaign for accessible environments for all, and homelike environments for older people in residential aged care. This is a particularly timely issue, and one which the Institute is proud to champion through this prize.

Following two years of hugely successful virtual awards exhibition and presentations – with the ability to reach thousands of people across the country and the world – we are staying with this format again this year, with celebrations in person to follow.

Thank you again and congratulations to everyone who is a part of this year’s WA Architecture Awards. All of the projects are worthy of celebration for the contribution they make to the people who occupy them, and to the communities in which they are located.

FROM THE JURY CHAIR



SIMON PENDAL
WA JURY CHAIR

Thoughtful architecture is one way in which society can be served with great affection. At our best, our profession operates with empathy and intellect, feeling and thinking, prefacing these before self-interest and excess. Our perpetual challenge is improvement and adaptation to our time – to confront our past and better respect our lands and its peoples and to move from linear to truly cyclical economies, reacquainting ourselves with the natural world and its beauty.

And so I offer observations on this year’s awards process as evidence of incremental improvement. I witnessed:

- Institute staff who gave this process the utmost care and diligence;

- an Institute committed to celebrating our best professional behaviours;
- patient volunteerism on a large scale, observing, listening and working collectively;
- great variety of projects and ideas to which our members commit themselves;
- and of course, I saw our profession’s constant struggle with its own imperfections, with the desire for improvement hard-wired into all of us.

Thank you to the Institute, its staff, our members, awards entrants, jury members and chairs and the University of Notre Dame. Congratulations to all award winners for 2022!

2022 JURY

THE GEORGE TEMPLE POOLE

Simon Pendal – 2022 WA Jury Chair
Sandy Anghie – WA Chapter President
Kim Macdonald – The West Australian
Finn Pedersen – Iredale Pedersen Hook

THE BRIAN KIDD ENABLING
ARCHITECTURE PRIZE

Peter Rouhliadoff (Chair) – Hassell Studio
Lara Mackintosh – Notre Dame University
Toni Neck – Think-e

COLORBOND® AWARD
FOR STEEL ARCHITECTURE

Ian Thow – BlueScope (Sponsor)
Georgina Willis (Chair) – Bernard Seeber Pty Ltd
Peter Keleman – Cameron Chisholm Nicol
Kym MacCormac – MacCormac Architects

COMMERCIAL ARCHITECTURE

Kaylee Hyland – Rondo (Sponsor)
Carolyn Marshall (Chair) – Life Fellow RAIA
Justin Carrier – CAPA Studio
Steven Smyth – Hunt Architects

EDUCATIONAL ARCHITECTURE

Colm McCormack – FMC Homeguard (Sponsor)
Jennie Officer (Chair) – Officer Woods Architects
Glenn Russell – Kerry Hill Architects
Will Thomson – Site Architecture Studio

EMAGN PROJECT AWARD

Jonathan Lake (Chair) – Gresley Abas
Beth George – Beth George, Architect
Jane Wetherall – With Architecture Studio

EMERGING ARCHITECT PRIZE (EAP)

Sandy Anghie (Chair) – WA Chapter President
Louise Ward – 2021 WA Emerging Architect
Prize Winner
Ahmed Elsayed – EmAGN Co-Chair
Ahdha Moosa – EmAGN Co-Chair

ENDURING ARCHITECTURE

Kate Hislop (Chair) – The University of Western
Australia
Maxine Canning – Maxine Canning – Architect
Adrian Iredale – Iredale Pedersen Hook

HERITAGE

Stephen Carrick (Chair) – Stephen Carrick
Architects
Nerida Moredoundt – Element Advisory Pty Ltd
Lara Watson – Lara Watson Architect

INTERIOR ARCHITECTURE

Katherine Ashe (Chair) – vittinoAshe Pty Ltd
Brenden Kelly – Hassell Studio
Dennis Silva – Cast Studio

MONDOLUCE LIGHTING AWARD

Mitchell Cook (Chair) – Kloppe & Davis Architects
Martin Klaasen – Klaasen Lighting Design
Rosie Norris – Tempo Studio Pty Ltd
Nicholas Putrasia – Plus Architecture

PUBLIC ARCHITECTURE

Martin Asiata – Fielders (Sponsor)
Jane Wetherall (Chair) – With Architecture Studio
Marco Vittino – vittinoAshe Pty Ltd
Greg Howlett – COX Architecture

RESIDENTIAL ARCHITECTURE

– HOUSES (ALTERATIONS AND ADDITIONS)

Yun Nie Chong (Chair) – Nie & Co Architects
Michael Jorgensen – Brown Falconer
Mark Young – Hunt Architects

RESIDENTIAL ARCHITECTURE

– HOUSES (NEW)

Beth George (Chair) – Beth George, Architect
Andrew Boyne – Western Architecture Studio
Gertjan Groen – Kerry Hill Architects

RESIDENTIAL ARCHITECTURE

– MULTIPLE HOUSING

Rana Schuller – Dulux (Sponsor)
Dimmity Walker (Chair) – Spaceagency
Matt Delroy-Carr – MDC Architects
Christopher Shaw – Kerry Hill Architects
Claire Tyrell – Business News

SMALL PROJECT ARCHITECTURE

Jonathan Lake (Chair) –Gresley Abas
Carl Greaves – Western Architecture Studio
Lee Syminton – Lee Syminton Architect & Curtin
University
Louise Ward – Hillam Architects

SUSTAINABLE ARCHITECTURE

Eugene Hooks – Living Edge (Sponsor)
Leonie Matthews (Chair) – Matthews McDonald
Architects
Tobias Busch – spaceagency
David McLoughlin – Development WA

URBAN DESIGN

Clive Bergamaschi – Midland Brick (Sponsor)
Eamon Broderick (Chair) – TRCB
Jessica Hames – Hames Sharley
Mandy Leung – Space Collective



WA
ARCHITECTURE
AWARDS
2022



THE GEORGE TEMPLE POOLE AWARD

WALYALUP CIVIC CENTRE

KERRY HILL ARCHITECTS
(KHA)

Walyalup Civic Centre quietly resolves its complex brief. A sharp glass box is covered by a lustrous veil providing shade and urban scale. The veil registers constant change via reflected light. It connects street to square providing cover and a convenient shortcut.

A lawn is planted offering civic space to meet, be that in celebration or protest; a soft public space framing the stony rear of St John's Church. Under the lawn is a library with a ceiling that swooshes upwards to an internal promenade. Shaded courtyards define the library's east and west, offering places of genuine quality to read. Windows automatically adjust to save energy, the building's mass used as an absorber of heat. The new work plugs into the existing Town Hall, giving it greater serviceability and accessibility.

Entry occurs naturally. An internal loop at grade connects library, reading room, reception counter and civic foyer-cum-gallery. Moving outside again is to see another loop, this time up the inclined bank, onto an all-weather verandah and directly to the council chambers and reception rooms, where local matters are contested and resolved in the gaze of the townspeople. From here continues the more private offices beyond and above – offices of efficiency, economy and elegance.

Experiencing this 'sequence of sequences' appears so simple and self-evident it could be mistaken as being inevitable or easy. This is the great achievement of Kerry Hill Architects, that with elegance, exactitude and purpose it has been realised.





THE BRIAN KIDD ENABLING ARCHITECTURE PRIZE

ROCKY BAY GIRRAWHEEN

KPA ARCHITECTS

This project sets a wonderful precedent and new benchmark for residential facilities of its type, putting the residents' lifestyles and their support requirements front and centre. It demonstrates a generous response to the various needs of this user group, beyond the high-level of support required. Support and operational services are seamlessly integrated into a typical suburban residential setting, where natural light, volume and space enhance interaction between residents and resident's different needs are normalised, resulting in homes for 6-8 adults in a challenging social and budgetary context.

The project is empathetic in its approach to responding to a prescribed and detailed brief, exceeding the facilities normally provided, and demonstrating strategies for use in future housing. The layers of complexity and sensitivity in the design for the residents, staff and operators shows compassion by KPA and that they considered the end user in every step of the process which Brian Kidd advocated for and for which this prize celebrates.





**COMMENDATION FOR THE BRIAN KIDD
ENABLING ARCHITECTURE PRIZE**

**KIDS' BRIDGE
(KOOLANGKA BRIDGE)**

**FRATELLE AND BROWNLIE
ERNST & MARKS (BEAM)**

The amenity provided is exceptional, specific to the site and the target user group. The Kid's Bridge allows respite from the clinical world of the hospital in a fun and engaging way through colour, sound and its enticing and expressive shape. It is more than a bridge from point A to B.

Through experiential pragmatism and consideration of the unique needs of the users this project underpins the ethos of the Brian Kidd Prize.





COLORBOND® AWARD FOR STEEL
ARCHITECTURE

RFBYC
DINGHY & TRAINING CENTRE

MJA STUDIO

RFBYC Dinghy & Training Centre is a refined architectural composition providing a highly functional building within its beautifully detailed yet restrained form. The low level pavilion-style building comprising of three intersecting forms, sits nestled on the banks of the Swan River.

The selection of cladding materials responds to place and the immediate environmental conditions of the site. The composition of sliding perforated metal screens, with glazing orientated to utilise river views and limestone masonry elements to the north, is a nod to the site's architectural heritage.

Steel framing is utilised to enable large clear spans, expressed and well detailed in selected locations.

The Aramax roof cladding allows for a deep free-spanning cantilevered roof form. Rising to the north allowing natural light to enter central spaces, falling to the south to offer protection against the prevailing seabreeze while reducing visual impact from the Swan River.

The roof is the most distinctive visual element of this project, restrained and understated with well-resolved composition of materials results in the overall elegance of this addition to the RFBYC.





COLORBOND® AWARD FOR STEEL
ARCHITECTURE – COMMENDATION

MOTHER SETON CENTRE SETON CATHOLIC COLLEGE

PARRY AND ROSENTHAL ARCHITECTS

Mother Seton Centre solution complements and shows sensitivity to the existing buildings on the site, resolving complex site conditions.

The project responds to the vernacular forms of the existing buildings, with the selection of materials and finishes offering warmth and elegance.

The use of COLORBOND® low profile matt steel cladding with the resolution of gutter detailing provides a refined finish to the roof form, contributing significantly to the resolution of the project.





THE ROSS CHISHOLM AND GIL NICOL
AWARD FOR COMMERCIAL ARCHITECTURE

LINKS KENNEDY BAY
GOLF CLUBHOUSE

GRESLEY ABAS

The Links Clubhouse at Kennedy Bay is a precise insertion in the evolving landscape of this coastal suburb. The project has been oriented as a focal point and meeting place for the growing community, responding to the landscape of the golf course and the main urban axis of the future town centre. The building planning has been carefully considered to respond to the climatic and solar conditions of the site. Its interpretation of the brief and the typical requirements for a golf clubhouse is both innovative and refreshing. Openings in the singular black skin of the facade have been carefully considered for views, daylight and cross ventilation.

The building has been lifted above the ground to enhance its role as a community focal point as well as to conceal the necessary back of house functions which support the building program. The coordination of the architecture with the engineering services, the landscape design and the graphic design of the signage, create a highly crafted whole which is greater than the sum of its modest parts. The Kennedy Bay Links Clubhouse is an exceptional example of collaboration between the architect, a committed client and the allied design disciplines to produce a building which will serve its community admirably for years to come.





AWARD FOR COMMERCIAL ARCHITECTURE

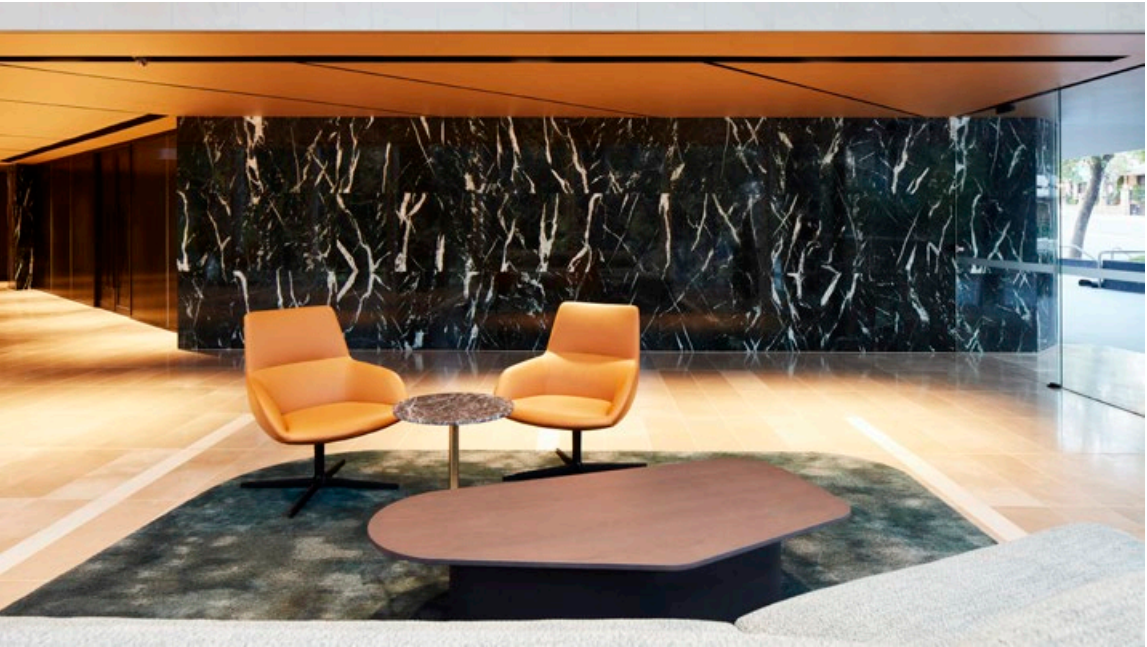
251 VISTA GREEN

COX ARCHITECTURE

The jury was impressed by the transformation of the entry and public interface of 251 Vista Green and the realisation of the core concepts which reimagine and relate it to its surrounding landscape, urban and heritage context with sensitivity and care. The new lobby intervention for the clients, tenants and broader community has been masterfully crafted as a new entry sequence and communal space. Changing volumes and scale, and, a clear re-organisation and opening of internalised spaces invite the adjacent landscape and natural light deep into the building's core.

The palette is restrained yet crafted with careful attention to detail, creating a pleasant space to journey to and from the building, or for people to meet and socialize in. A new cafe within the lobby and alfresco terrace extends the new experience onto the park, reinforcing the architects' core concept of adjacency, landscape and connection to place while encouraging people to stay to enjoy.

While modest in scale as a commercial piece of architecture, the final outcome has been executed to full effect and is a deserving recipient of an architectural award.





AWARD FOR COMMERCIAL ARCHITECTURE

**ABN GROUP
HEADQUARTERS**

HASSELL

The new headquarters for the ABN Group is a considered design response to its context. Acknowledging the past, the present and offering a quality precedent for future infill development in our established suburbs. The architects have touched each edge of the complex site, adding value to the public realm and pedestrian experience of this urban location. The insertion of showrooms, laneways and food tenancies have created opportunities which are also being seized by adjacent property owners to activate previously inactive spaces with new courtyards and shopfronts.

The resolution of the architecture has been crafted with the same care and consideration. The detailing of familiar materials creating depth, shadow and texture combined with landscape at all levels enhances the building's presence within its context. The ABN Group headquarters is a highly considered work of urban architecture in which the influence of the architect can be seen beyond the boundaries of the site, making a positive contribution to the fabric of Leederville as it continues to evolve.





**COMMENDATION FOR COMMERCIAL
ARCHITECTURE**

**KARRINYUP SHOPPING
CENTRE**

**HAMES SHARLEY AND
TRCB**

The architecture of the redeveloped Karrinyup Shopping Centre was inspired by the relaxed sensibilities of its beachside location, the architecture balances a complex composition of existing buildings, layered spaces and challenging brief requirements. The new mall is flooded with daylight by a sinuous and sculptural skylight, the ground plane animated by a series of precincts and links to external spaces which connect gathering places, future residences and transport infrastructure. The architects have deftly combined these disparate elements into a cohesive and disciplined architectural composition.





COMMENDATION FOR COMMERCIAL ARCHITECTURE

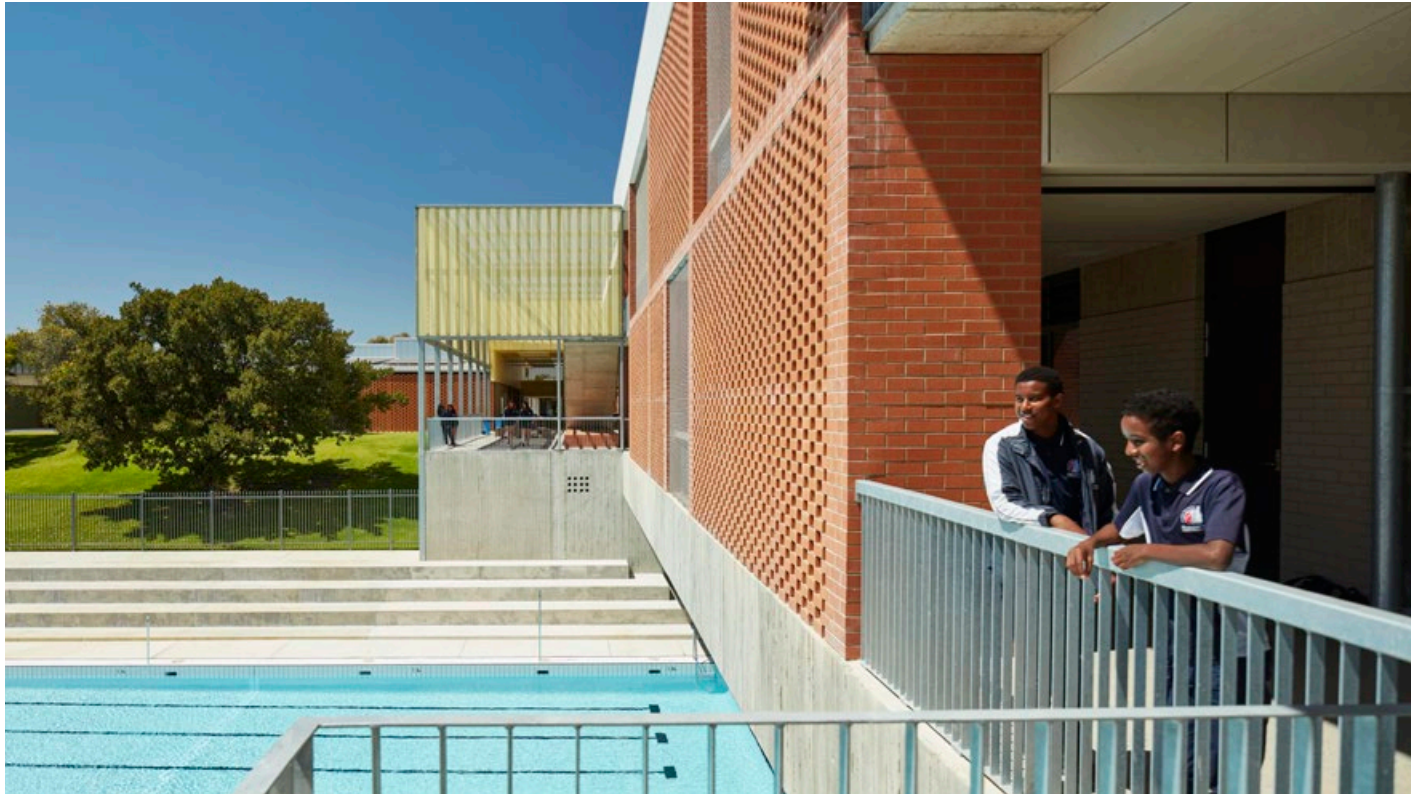
WOLF LANE OFFICE

COX ARCHITECTURE

Inspired by the edgy and urban character of the ever-evolving laneways of Perth, the Wolf Lane Office captures the essence of this context in a bespoke, refined and seamless design response. The reorienting of the entry to the laneway provides a commercial outcome for the floor plate, while the restrained palate of materials, and integrated approach to the allied disciplines create a precise insertion into the existing building fabric giving it new life as a contemporary urban workplace in the heart of the city.

PHOTOGRAPHY: JACK LOVEL





**THE HILLSON BEASLEY AWARD FOR
EDUCATIONAL ARCHITECTURE**

**BALCATT A SENIOR HIGH
SCHOOL REDEVELOPMENT**

HASSELL

The architecture of Balcatta Senior High School Redevelopment is cleverly defined through consideration of place, site and context. A deft planning gesture boldly extends the original campus spine and integrates disparate new teaching spaces, resulting in successful reorganisation and a compelling contemporary reimagining of the 1960s Marshall Clifton school.

Careful consideration of the existing campus organisation responds to and seamlessly integrates the old and new, reinforced by the clever reimagining of the existing school material palette through the bold use of off-form concrete, split-faced block and brick. The architecture is a subtle but immediately recognisable nod to the existing school language.

This voluminous four-storey building presents an imposing scale to the street, cannily organising the new learning spaces across the dramatically sloping site to anchor the building against the existing school. The interface between old and new seems effortless, flashing a vibrant splash of golden yellow against the concrete tones and textures. Subtle but meaningful interventions within the original campus respond to the new architecture and solidify the sense of careful integration.

This is an exceptionally conceived and executed project. Its perceptive response to site, context and school character is embodied by a highly engaging architectural language.





AWARD FOR EDUCATIONAL ARCHITECTURE

**KIARA COLLEGE ADDITIONS
AND IMPROVEMENTS**

**WITH ARCHITECTURE
STUDIO**

With Architecture Studio have successfully transformed and rejuvenated this mid-70s school with a fresh new identity. This singular building gesture outperforms its primary function as the new school performing arts theatre, to redefine and provide clarity in the spatial organisation of the school; through a welcoming ‘green carpet’ forecourt, a strong contemporary presence to the street and the enhancement of the ancillary landscaping and external spaces.

The bold architectural response sits comfortably within the existing school fabric, reflective of the broad-banded eaves of the original architectural language, with a balanced palette of materials providing clear legibility and architectural order to the built form. The landscape entry forecourt and six-season garden are sensitively considered spaces, serving to define this project and its place within the existing campus.

The crisp contemporary architectural approach is successful at multiple scales; the white fluted floating ‘crown’ draped over the striated brick facade is visually striking, the white brick reveal and courtyard entry extends a welcoming procession and expands the foyer beyond internal confines, entry canopies are cleverly reinterpreted with apertures that animate sunlight and shadow, with integrated seated edges and gated veils all holding the qualities of a theatrical performance succinctly and seamlessly choreographed.

PHOTOGRAPHY: ED JANES





COMMENDATION FOR EDUCATIONAL
ARCHITECTURE

MOTHER SETON CENTRE
SETON CATHOLIC COLLEGE

PARRY AND ROSENTHAL
ARCHITECTS

Mother Seton Centre does not aim to reidentify the Seton College campus, but commendably accepts and enhances its disposition and morphology. This new building is an integral set piece in the college masterplan, and deftly organises entry, topography and enclosure simultaneously; providing a legible school entry with a modestly 'grand' roof and stair; creating an edge to a previously porous open space to make a highly amenable courtyard, and making warm, comfortable, tactile internal spaces that belie their institutional setting.

PHOTOGRAPHY: ROBERT FRITH / SILVERTONE





THE EMAGN PROJECT AWARD

ROCKINGHAM YOUTH CENTRE

SITE ARCHITECTURE STUDIO

The City of Rockingham's new Community Youth Centre has transformed a mundane, unloved, and substandard commercial tilt-up building into a thriving and delightful, contemporary youth hub.

For the emerging architects who designed and delivered the centre, it's clear that the project provided a challenging yet inspiring and rewarding learning experience; for the youth representatives who were guided through a meaningful and collaborative consultation journey by their architectural counterparts, the project has galvanised a strong sense of identity and created a sophisticated and flexible 'home away from home'.

In direct contrast to the confined nature of the existing building, the design has responded to the youth's primary design objective to connect with outside space.

New openings have been carefully placed in external walls to visually connect with the landscape beyond and, together with a new canopy, engage with the streetscape. A large internal void draped with greenery creates a light-filled, welcoming entry lobby.

Although modest in scale, the project required negotiation of many unforeseen challenges during the design and construction phases. Shortcomings were creatively resolved with enthusiasm and commitment by the project team, who have delivered an inspired outcome for the city and an important community facility for Rockingham youth.





**RICHARD ROACH JEWELL AWARD FOR
ENDURING ARCHITECTURE**

CHRIST CHURCH GRAMMAR SCHOOL CHAPEL

**ORIGINAL ARCHITECT:
HOBBS WINNING
& LEIGHTON**

PHOTOGRAPHY: DMAX PHOTOGRAPHY

The 1970 Christ Church Grammar School Chapel is a worthy recipient of the Enduring Architecture Award. Of outstanding merit, this is a building that not only endures through but continues to influence time. It has been in constant use as the spiritual heart of the school for over 50 years. In that time, minor refurbishments have extended seating capacity and upgraded technologies to welcome virtual congregations from across the world.

The respectfully designed renovations, most recently by With Architecture Studio, testify to the chapel's generous accommodation of growth and change. Life's cycles of celebration, gathering and mourning have been hosted in its capacious timber-lined interior; the expansive south-facing glazing – so novel in its day and still fresh as an idea – providing reflective solace for users. That it is so strong a marker in the lives of those connected to the school is the very definition

of enduring. So too, the fact that it anchors the school's future development plans. It is a delightful, quiet, uplifting architecture emanating from masterful siting, formal simplicity, acoustic warmth, and a majestic view. Naturally ventilated and thermally controlled, it is a building of artistry and intelligence, as appropriate for its use today as it was half a century ago.



FREMANTLE TOWN HALL

HOCKING HERITAGE
& ARCHITECTURE

The Fremantle Town Hall with its prominent city centre location and tall clock tower is a landmark building. It is recognised as a fine civic building that is designed in the Victorian Free Classical Style. It symbolises civic dignity.

The architects have successfully worked collaboratively with the client and builder on the external conservation works that have combined with the contemporary design of the new Walyalup Civic Centre to enhance the community and visitor experience.

Conservation principles and best practice have been followed through extensive research, a staged approach and an evidence-based methodology to the work. Material deterioration and water ingress determined the priorities for the conservation work.

Works included new Welsh slate to the main roofs, reconstruction of decorative finials and balusters on the mansard roofs and turrets and conservation work to the stucco wall finish. Historic photographic evidence and contractor investigation contributed to decisions on material and colour selection as well as specific building details.

The architects have displayed considerable skill with the external conservation work being respectful of and sympathetic to the Town Hall's heritage values and positively contributes to the wider Fremantle town centre.

PHOTOGRAPHY: HOCKING HERITAGE & ARCHITECTURE





THE JULIUS ELISCHER AWARD FOR
INTERIOR ARCHITECTURE

WALYALUP CIVIC CENTRE

KERRY HILL ARCHITECTS
(KHA)

The Walyalup Civic Centre carefully weaves complex programmatic requirements in a cohesive yet diverse approach, representing Fremantle's character. The difficulty of the site's unusual geometry is primarily resolved through the anchoring of a unique curved volume that pierces through all levels. Users move in and around this finely crafted timber vessel, reminiscent of Fremantle's boating history – the space belonging to the public on the lower levels while the upper levels host civic and council functions. The underlying principles of democracy are celebrated in the termination of this dexterous manoeuvre with the council chamber being visible to the city as it spills open and into a publicly accessible balcony.

PHOTOGRAPHY: LEE KHENG TEOH



PHOTOGRAPHY: ROBERT FRITH



AWARD FOR INTERIOR ARCHITECTURE

HAMES SHARLEY PERTH STUDIO

HAMES SHARLEY

The Hames Sharley Studio relocation is an astute, adaptive reuse project showcasing the potential of underutilised first-floor tenancies within Perth CBD. The simplicity of, and neutral material selections give the project a sense of balance and an overall order. The key spatial move of carving out the core of the concrete floor structure creates a central void that acts as a hinge between the studio levels. This elegantly detailed vertical interchange distributes the program according to working modes – the lower level is determined as the quieter spaces and the more lively upper level spaces welcome you upon arrival.

The same principal staircase negotiates the vastness of the floor plate into smaller, more defined areas while still allowing the studio to host more significant public events.

On the horizontal plane, a beautifully organised material library is on display across the void to those meeting. On the edges, the operability of openings and screening allow for human-scale interactions within this expansive building envelope. Finer grain design responses amplify its contextual setting – such as the balcony poking its nose into the mall and the skylight funnel visually dragging an upper tenancy roof terrace down into the reception area adding to the atmosphere of the studio.

PHOTOGRAPHY: DION ROBESON





AWARD FOR INTERIOR ARCHITECTURE

THE PAD

SUZANNE HUNT ARCHITECT

The Pad is an exemplar ‘downsizing’ project and a demonstration of a close collaboration between client and architect to redefine the experience of aging in place. It privileges the quintessential elements of light, air and vegetation in a clear and sequential manner. A cumulative impact is impressed by a series of small moves seamlessly coordinated as you move through the site’s central axis.

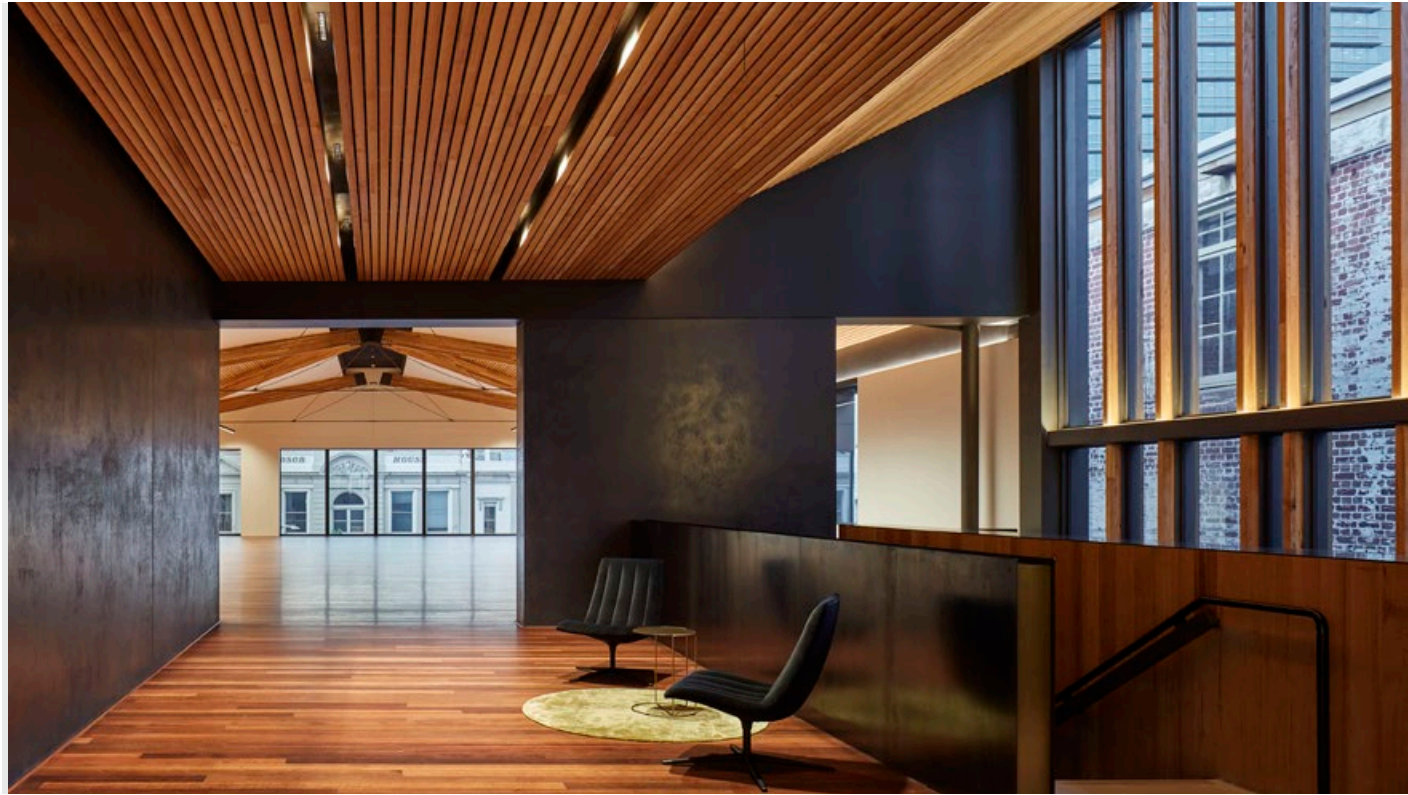
The circulation spine reveals the coveted river view upon entry and balances this vista through thoughtfully placed courtyards interjecting this passage. The embodied memory from the client’s previous home greets you as a small borrowed door detail at the front entry – a reminder of treasured places and past processes. Upon entering, you are then immersed in a rich and calm inner world.

PHOTOGRAPHY: DION ROBESON



The client’s need to temper light has resulted in a material palette of dark timber and deep green foliage that subdues and modulates the harshness of Perth’s abundant sunlight. Deep thresholds further regulate the inside and outside worlds through a refined series of layers; glazing, insect screening, glare control, blinds and security. The level of coordination and integration of lighting is handled with a level of care that is indicative of the client/architect working relationship.





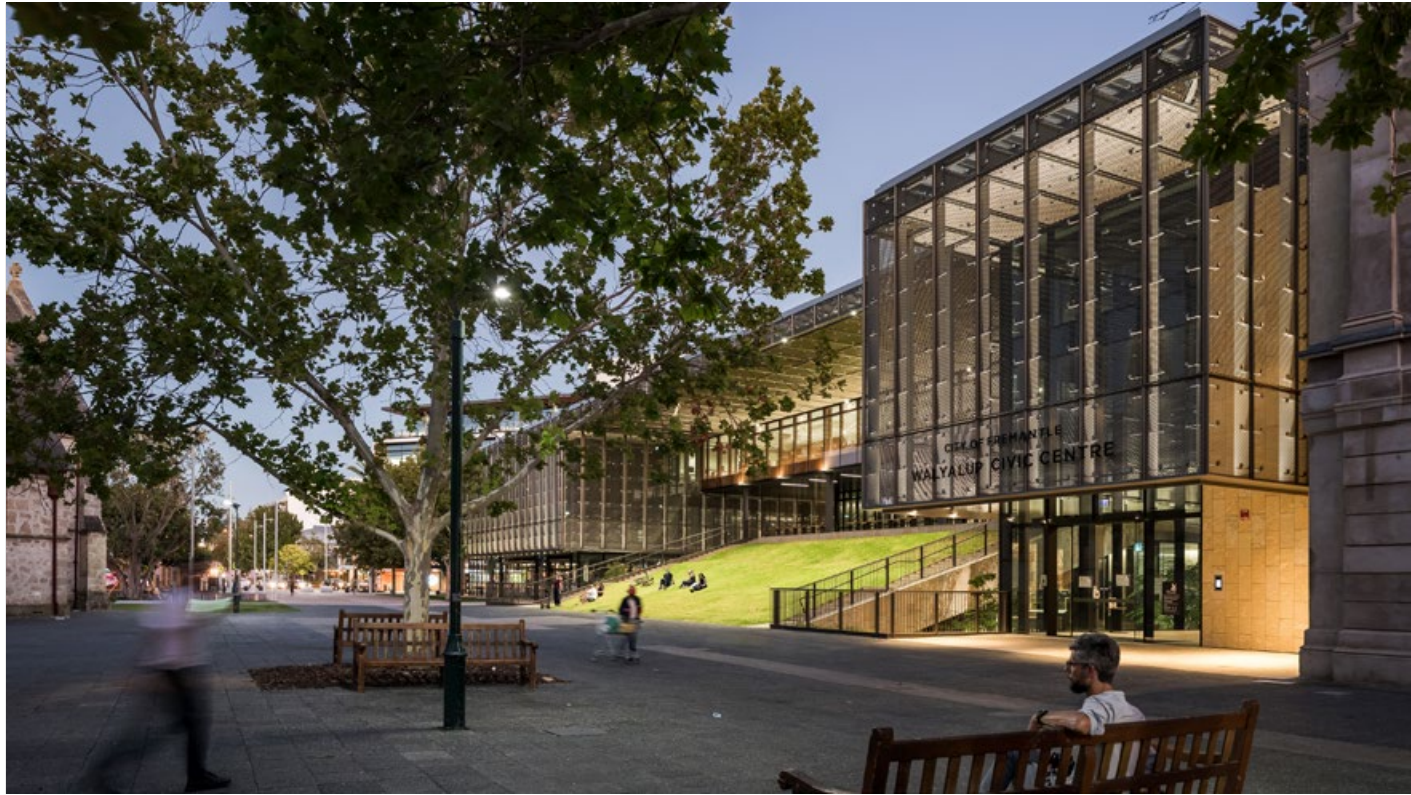
**COMMENDATION FOR INTERIOR
ARCHITECTURE**

WOLF LANE OFFICE

COX ARCHITECTURE

The Wolf Lane Office is a delightful addition to the laneway city fabric. The dilapidated heritage building has been brought back to life and reinvented by the architect's intervention. The repositioning of the entry to Wolf Lane is a decisive move that creates an impressive volume pulling light deep into the previously dark plan. The contextual design response celebrates the honesty and richness of materiality, while the playful and elegant approach to structure creates a beautiful and finely detailed open-plan space.





THE JEFFERY HOWLETT AWARD FOR
PUBLIC ARCHITECTURE

WALYALUP CIVIC CENTRE

KERRY HILL ARCHITECTS
(KHA)

Walyalup Civic Centre re-presents one of the most significant sites within the urban centre of Fremantle. Through a series of carefully considered historical, social, material, and formal references, the proposal addresses and responds to its surrounding context by establishing a clear language reflective of its civic function. The building encourages and reinforces public engagement through the integration of a community lawn, sunken gardens, transparency and permeability. The restrained approach of the project is primarily ordered by two elements, the inclined external lawn and the heavy internal drum, housing the council chamber. These two elements celebrate the notion of democracy, by setting the stage for public gatherings and inviting the community deep within the central functions of the building – coalescing in section with a deep accessible balcony.

PHOTOGRAPHY: NICOLAS PUTRASIA

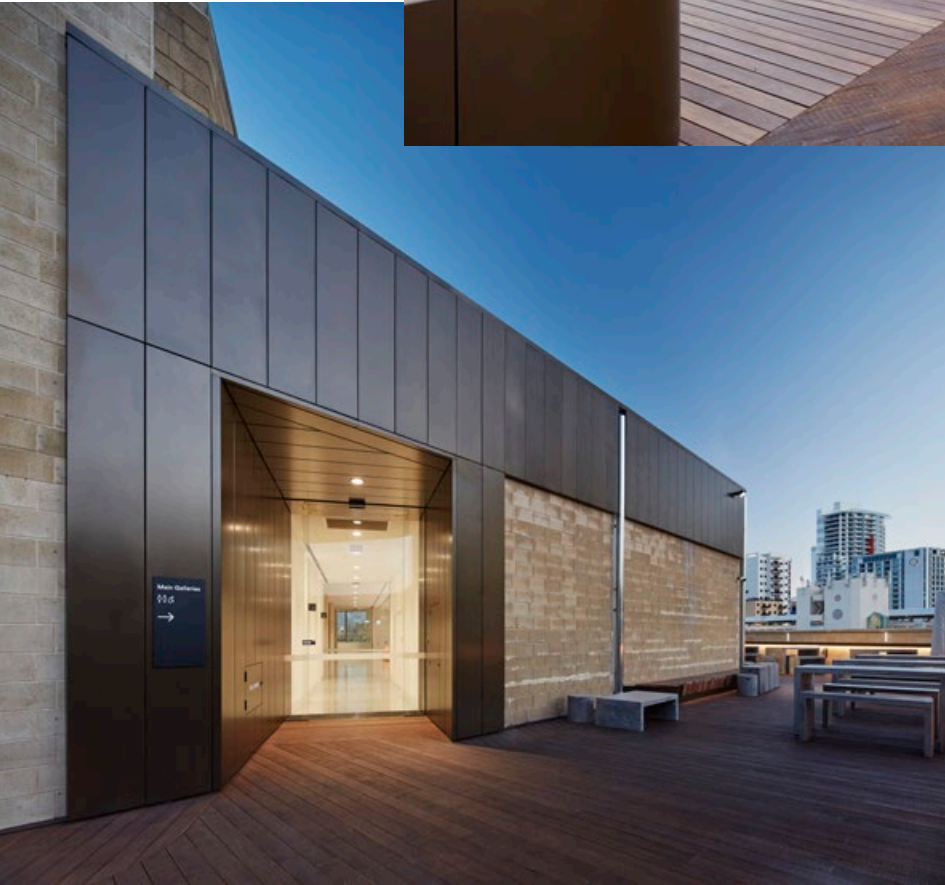
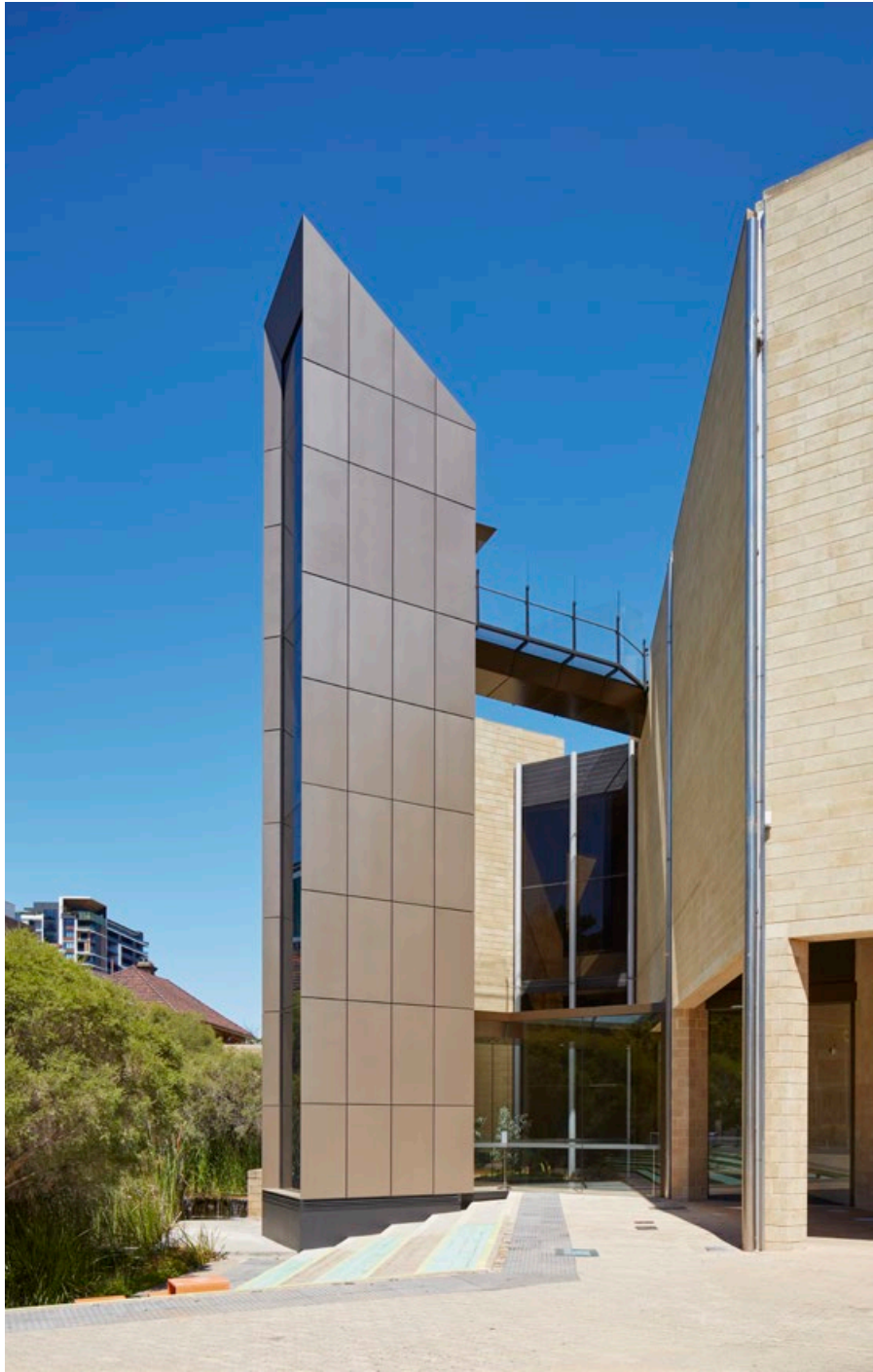


AGWA – ELEVATE

TAG + FJMTSTUDIO

The respectful and thoughtful design of AGWA rooftop has helped realise the gallery's vision to expand their demographic and reinvigorate customers' interaction with art and architecture. Focused primarily on providing public access to the building's impressive rooftop, the project has realised so much more.

The drawcard terrace is expansive yet nuanced as it negotiates the circuit of available roof-space, establishing visual connections with the cultural precinct and wider context, and re-establishing AGWA as a 'building in the round'.





**COMMENDATION FOR PUBLIC
ARCHITECTURE**

**RFBYC
DINGHY & TRAINING CENTRE**

MJA STUDIO

The RFBYC Training Centre is an elegant solution to a relatively minor and utilitarian building housing boats, training facilities and amenities.

Conceived as three separate elements, the design is skilfully integrated through close attention to detail and clever use of materials. The Aramax roof, with heroic cantilever, is particularly successful in providing a generous sheltered verandah facing the river, while its low-slung form minimises intrusion upon the heritage clubhouse beyond and the site generally, when viewed from the river.

The jurors believe the building is well deserving of a commendation.

PHOTOGRAPHY: DION ROBESON



THE PETER OVERMAN AWARD FOR
RESIDENTIAL ARCHITECTURE – HOUSES
(ALTERATIONS AND ADDITIONS)

HIGHAM ROAD HOUSE

PHILIP STEJSKAL
ARCHITECTURE

Higham Road House is a finely crafted and playful family home.

The client and architect’s shared journey developing the design has resulted in a delightful home bursting with rich and varied spatial qualities.

The central courtyard functions as the fulcrum point of the house. The surrounding internal living spaces extend into the courtyard blurring the interior and exterior, imparting an open spacious quality throughout the house.

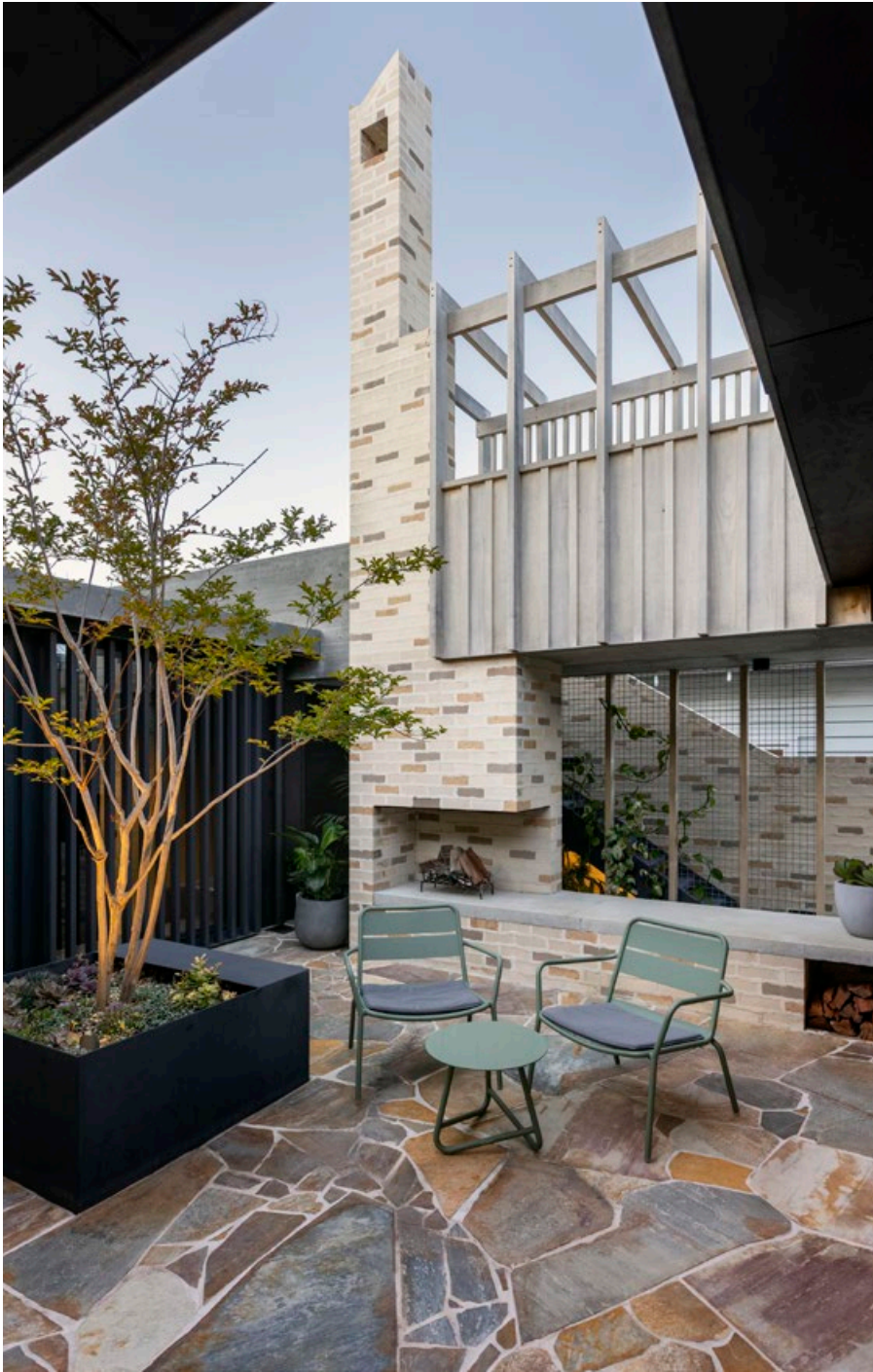
The challenges of a south-sloping site are overcome with the central courtyard, cleverly arranged high window placement and innovative roof forms that allow ample natural light into the internal rooms. Driven by passive solar design, the resulting spatial qualities are dynamic.

The project exhibits a care and love of maintaining rigour in all aspects of planning and detailing.

Building elements are rich in material and carefully composed, working together as a coherent whole.

Considerable thought has been invested in the making of this beautiful bespoke family home. It is an accomplished design and a joy to be in.

PHOTOGRAPHY: BO WONG





**COMMENDATION FOR RESIDENTIAL
ARCHITECTURE – HOUSES (ALTERATIONS
AND ADDITIONS)**

RULE STREET ADDITIONS

**OFFICER WOODS
ARCHITECTS**

Rule Street Additions is an intelligent and thoughtful architectural response to a modest site and budget.

While maintaining the craftsmanship of traditional carpentry inherent to the existing weatherboard cottage, the addition is distinctly contemporary. The topography of the site has been effectively utilised to deliver a series of spatially generous new living spaces. The design concepts are clear and skilfully executed.

The architects have cleverly managed value and impact to achieve a meaningful addition for their client.

Rule Street Additions is a beautiful project and a commendable work of architectural restraint.





**THE MARSHALL CLIFTON AWARD FOR
RESIDENTIAL ARCHITECTURE – HOUSES
(NEW)**

JIMMY’S HOUSE

**MJA STUDIO WITH
STUDIO ROAM AND IOTA**

PHOTOGRAPHY: JACK LOVEL

This exceptional house places conceptual and programmatic aspirations on equal footing with broader agendas: neighbourhood generosity, passive environmental performance, and biodiversity. This inner-suburban infill development absorbs a 2-3 bedroom household while sustaining more landscape area than the site’s initial footprint. The house’s courtyard configuration, fringed by two, L-shaped wings, receives optimal sun exposure and creates three tiers of garden and terrace, meeting the neighbouring park and playground with a deferential height. The interiors are warm and comfortably private, yet there is a friendly outward expression of the house’s daily life. Blue-glazed bricks reference the surrounding roof tiles, and in searching for a Perth vernacular, the architects sought design lessons from local architects of the 1960s in the production of a home both vibrant and modest. Inside, there is a balance between refined and raw finishes.

Perforated walls and moveable screens enable changeable levels of exposure to the street as well as passive thermal control, and all spaces are one-room deep to ensure cross ventilation, enhanced by a thermal chimney. The activity of the house spills onto various decks and into the main courtyard, which in turn bring gardens – medicinal, edible, endemic, and treed – to the interiors. Jimmy’s House is exemplary in its approach to small-scale infill development.





AWARD FOR RESIDENTIAL ARCHITECTURE – HOUSES (NEW)

CHESTER STREET HOUSE

NIE AND CO ARCHITECTS

Chester Street House accommodates three generations of family members across a long, sloping site, through an arrangement of gardens and elegant, pavilion-like structures. There is a strong sense of fluidity throughout the design, which cleverly negotiates complexities including solar access and shading, adaptation to different family configurations, and potential future subdivision. Strategically located courtyards support the planning and, together with delicately detailed timber screens, lend privacy to the many different users as well as the interface with the street.

There are multiple ways for the family to move through the project and engage with one another, as well as spaces for retreat. The architects have given attention to resolving details and creating delight throughout the scheme, with wonderful spaces for the family to assemble in different ways – from the pool and courtyard that link

the two wings of the house, to a roof deck, a double-height terrace, and the heart of the design: a generous, beautifully designed kitchen and living area where they gather for shared meals. Chester Street House is less a dwelling than a small village, skilfully designed to foster ageing in-place and provide a warm family home for many years to come.





**AWARD FOR RESIDENTIAL ARCHITECTURE
– HOUSES (NEW)**

ENCLOSED HOUSE II

MORQ

Cloister House II pursues sculptural and atmospheric qualities from the site scaled to the detail. It meets the street with secrecy and intrigue: monolithic walls hug three boundaries, and at the front slide past one another, broken up by planting and concealed openings. Within these walls are subtractions: small courtyards to the east corners, and a cloistered garden at its centre. Consistent with its monastic heritage, the cloister is ringed with circulation and shared spaces, with more private rooms toward the house's perimeter. It holds a deck that can be merged with the living space, and through it the sky and weather become inseparable from the interiors.

The architects have crafted immersive moments: moving from the low-lit entry into the open living space that is connected to the courtyard; taking in deep views from the recessed and beautifully detailed kitchen, passing through a wash of filtered light at as you turn toward the master bedroom. The courts, smaller openings and skylights bring in sunlight and provide long views outward, connecting with surrounding trees. There are deeply shaded recesses with a sense of calm and quietude, creating sanctuary for the occupants. Light and darkness are in this project handled as materials with form and substance.





**COMMENDATION FOR RESIDENTIAL
ARCHITECTURE – HOUSES (NEW)**

D_RESIDENCE

**CARRIER AND POSTMUS
ARCHITECTS**

A project with a clear and elegant planning logic and a marvellous section, D_Residence is carefully arranged around a light-filled double volume. Connections and unexpected lines of sight are orchestrated through the architect's expert handling of the house's section, where a series of levels deftly negotiate the house's sloping site. The architects have worked closely with the builder to use concrete to sculptural effect. Plan and section, structure and space, and hard and soft landscaping are seamlessly integrated in this well-considered family home.





**THE HAROLD KRANTZ AWARD FOR
RESIDENTIAL ARCHITECTURE – MULTIPLE
HOUSING**

**GUILDFORD GRAMMAR
NEW BOARDING HOUSE**

**WITH ARCHITECTURE
STUDIO**

PHOTOGRAPHY: DION ROBESON

The skill of the architects has delivered much more than 132 student accommodation rooms. The project resonates with conceptual clarity across all scales from siting to planning to detail. Seamlessly integrating with the wider heritage precinct and the streetscape, impressively responding to the topography and wetland setting, it is rigorously and rationally planned to provide maximum operational flexibility and high levels of amenity for the students.

Materials are well selected and deftly handled, the red bricks connect the new building with the language of the existing campus while the detailing is clearly contemporary, resulting in a building with a magnetic presence that holds its own in the heritage context. Equal attention is given to both internal and external areas with economy and generosity. Interior finishes are robust yet refined throughout, creating comfortable and welcoming spaces that support the student experience.

Careful and intelligent planning is evident, prioritising views to the wetlands from common spaces, with well resolved security and privacy considerations essential to a co-educational boarding facility. The integration of systems to monitor and reduce waste and energy consumption and fresh air via opening windows to every room make for a masterful building that delivers on many fronts.



ALOCASIA RESIDENCES

HILLAM ARCHITECTS

Alocasia Residences is anchored by a fine balance between structural economy and restrained architectural expression. The singular gesture of the curtain screen element has multiple facets; its composition simultaneously characterises the elevation, provides sun shade, balustrading, privacy, fire separation, and is also beautiful. The apartment planning responds directly to the leafy suburban context, framing views to the river and nearby parkland. Through expert interpretation of local planning strategies, this project serves as an exemplary model of suburban infill development.



PHOTOGRAPHY: DMAX PHOTOGRAPHY



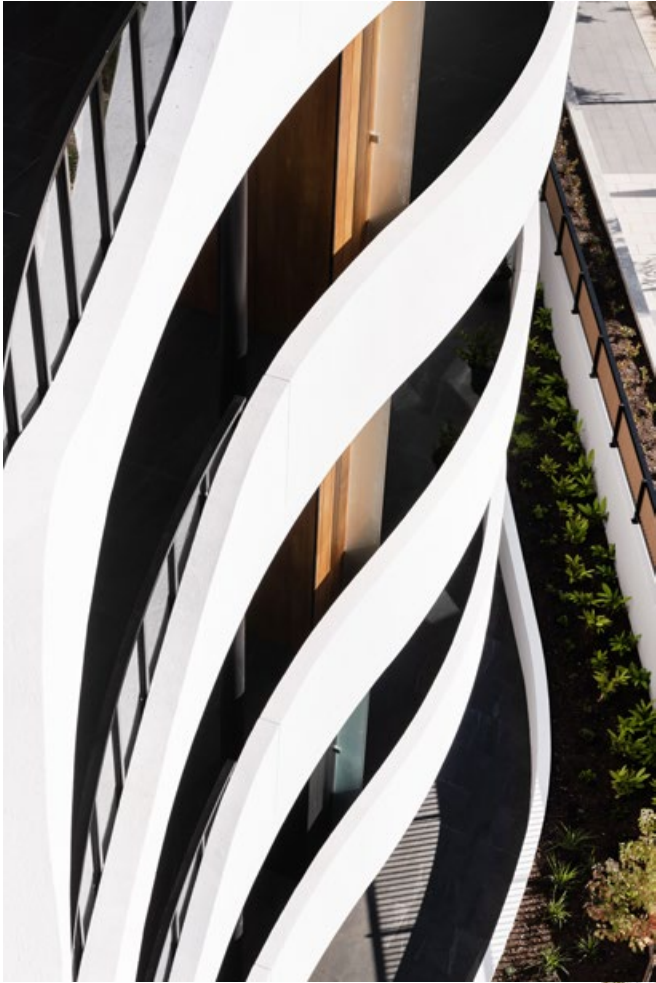


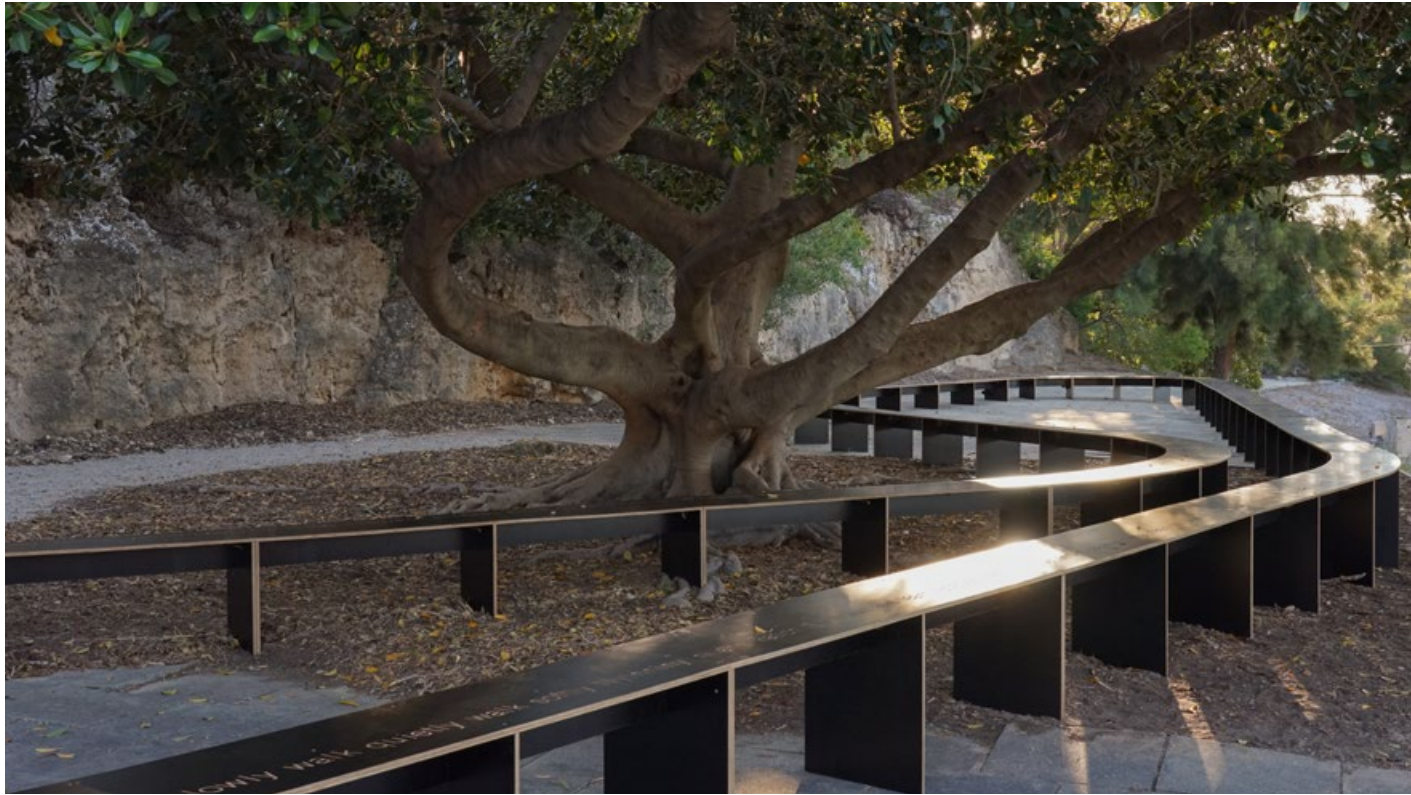
COMMENDATION FOR RESIDENTIAL
ARCHITECTURE – MULTIPLE HOUSING

TREEHOUSE

MJA STUDIO

Treehouse is rigorously planned around key conceptual and functional principles that privilege north orientation and natural ventilation. The result is a fluid building that is pragmatic and responsive to the broader context, while generous in its offer to residents. The central, open-air circulation spine is populated with planters and light wells, that ensures every dwelling is cross-ventilated, and, with the benefit of time, allows one to envisage a lush vertical garden within the internal breezeway.





THE IWAN IWANOFF AWARD FOR SMALL PROJECT ARCHITECTURE

GATHERING PLACE

PENHALE + WINTER WITH SANDRA HARBEN

The Gathering Place by Penhale + Winter, in collaboration with Sandra Harben, is a highly considered and conceptually complete project. The product of co-authorship with Whadjuk Noongar Elder Sandra Harben they have produced a culturally rich and contextually sensitive design outcome.

Its physical form of a sinuous form-ply seating that gently winds its way around a large fig tree is deceptively simple. However on each layer of inspection, from its overall place and siting to the final nuancing of its construction and installation, the team have achieved a high level of resolution and completeness in execution.

Created as a love letter to place, the Gathering Place was constructed in response to the specific quality of the place and acknowledges both its traditional deep time history and its recent transformation through colonisation.

The form-ply seating winds its way around the fig tree and carefully connects to other significant existing spatial qualities such as the limestone excavation, views out over the Derbarl Yerrigan and the broad dark canopy of the fig tree.

While the seating physically ties the site together it's the carved 'love letter' within the seating that really elevates the experience of the place. It is both a story that can be read as a narrative but also bring beauty in its execution of cursive writing and finally as simple phrases to be enjoyed in themselves.





COMMENDATION FOR SMALL PROJECT
ARCHITECTURE

WILLETTON LIBRARY
REFURBISHMENT

CHINDARSI ARCHITECTS

The Willetton Library Refurbishment by Chindarsi Architects is a compelling response to a challenging client budget and brief.

Externally a re-orientation of the entry creates a stronger connection to the site, improving wayfinding and accessibility. A simple lick of paint transforms the library into a bright and vibrant community building.

Internally saw the insertion of large floor-to-ceiling windows with clever use of coloured film over the highlight levels. This simple move adds a vibrancy and delight that transforms the whole experience of the library.

The final outcome is a warm and welcoming space that has given new life to a valuable community building.



COMMENDATION FOR SUSTAINABLE
ARCHITECTURE

WALYALUP CIVIC CENTRE

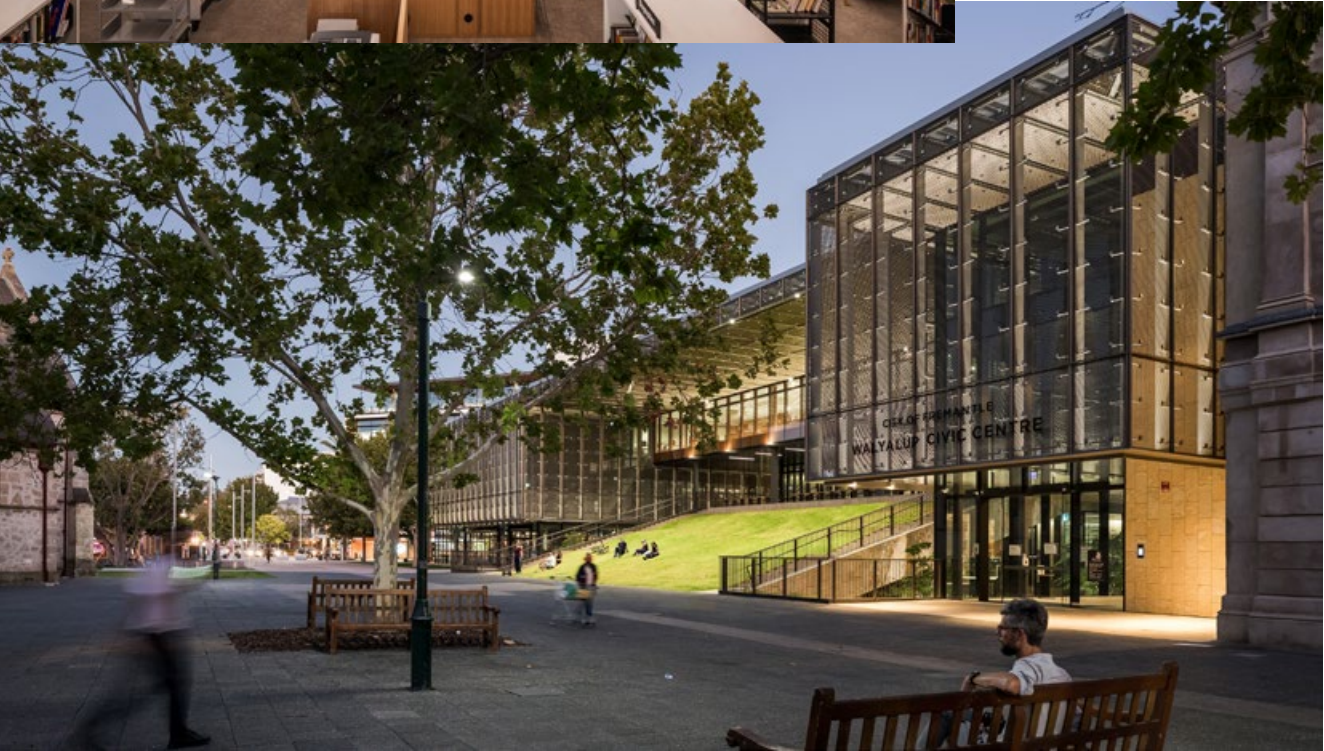
KERRY HILL ARCHITECTS
(KHA)

Kerry Hill Architects has designed the new spaces within the Walyalup Civic Centre for the City of Fremantle to achieve an operational net zero target. To achieve this, they have employed a series of passive and active strategies including landscaping, shading, double glazing, mixed-mode ventilation and solar energy.

The jury commends Kerry Hill Architects for creating a new building that is more sustainable and makes a significant contribution to the civic heart of Fremantle.



PHOTOGRAPHY: NICOLAS PATRUSIA
LEE KHENG TEO (OPPOSITE ABOVE)



WOLF LANE OFFICE

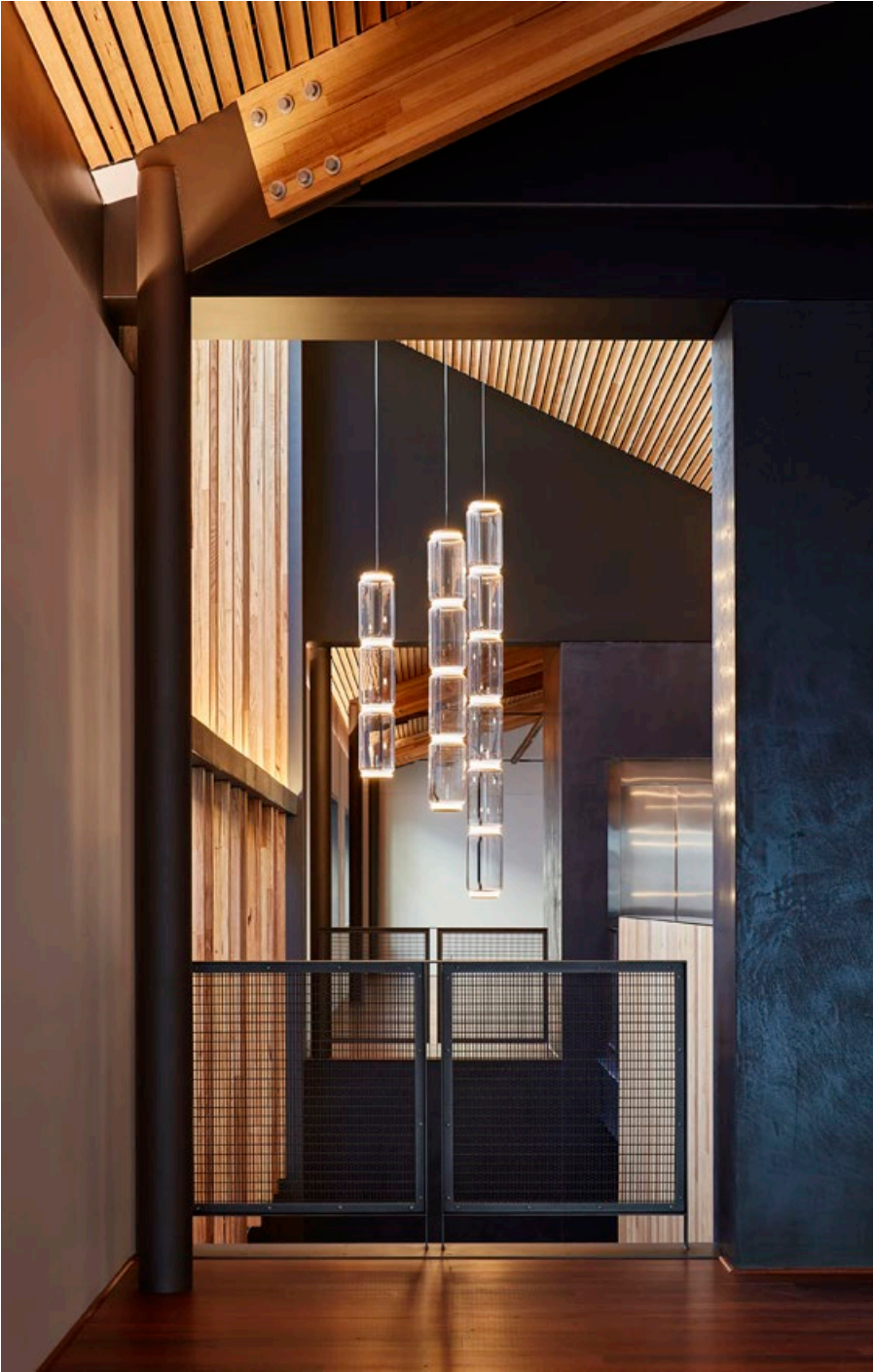
COX ARCHITECTURE

Set above the hustle and bustle of Murray Street and within the gritty context of Wolf Lane, this office refurbishment is an exceptional example of how lighting and architecture can work together to create something unique and truly memorable.

Cleverly integrated feature lights illuminate the glazed opening, guiding visitors to the side entry while activating the laneway. Once through, bespoke glass pendants accentuate the verticality of the volume and gently lead one up the staircase to the exhibition space above. Here a combination of lighting effects offer a uniform, warm glow, accentuating the many timber finishes.

Most notably, the simplicity of the suspended slim-line extrusions and concealed up-lights celebrate the bespoke scissor trusses as architectural features. Building on the column-free, open-plan layout, the balance of ambient, feature and task lighting offers much needed flexibility within the commercial spaces.

The jury commends the strong collaboration between architecture, interior design, and lighting design evident in the technical resolution, overall feeling of the space and meticulous attention-to-detail.



PHOTOGRAPHY: JACK LOVEL





COMMENDATION – THE MONDOLUCE
LIGHTING AWARD

THE PAD

SUZANNE HUNT ARCHITECT

The jury was impressed with the amount of collaboration evident between architect, lighting designer and the client in this project. Together, they've created a lighting design which is aesthetic and highly functional. While considerate of aging in place generally, the approach was also highly personable and clearly in response to many of the client's unique quirks and living habits.

Features of note included low-level sensor-activated lights to all circulation spaces and wet areas, low-glare task lighting and a variety of clever lighting controls.





THE JOHN SEPTIMUS ROE AWARD FOR
URBAN DESIGN

WALYALUP CIVIC CENTRE

KERRY HILL ARCHITECTS
(KHA)

The design of Walyalup Civic Centre in Fremantle is elegantly stitched into its complex setting in the heritage-listed west end of Fremantle.

The resolution of a complex programme allows public access through the building at varying times over multiple levels in a manner that lifts expectations and then delivers.

The civic space of the adjacent Walyalup Koort (Kings Square) seamlessly extends into the public realm of the council library, foyer and meeting rooms in a generous and trusting gesture; culminating with the inclined front lawn overlooking the square.

This north-facing shaded grass terrace is already home to several community events, music and theatre performances, lots of lunches and even a few political protests; Fremantle residents are making it their own.

PHOTOGRAPHY: GERTJAN GROEN

The veiled glazed facade of the building is proportioned to complement the adjoining heritage-listed town hall while providing a welcoming and informal edge to the surrounding streets. Pulled apart at key moments to allow connections across the site and through the building, this device is very successful.

The Walyalup Civic Centre is a beautifully designed building that is effortless in its simplicity; a place that is intuitive to enjoy and welcoming to its community.



PHOTOGRAPHY: BEOMJIN KWAN (ABOVE) | NICOLAS PUTRASIA



COMMENDATION FOR URBAN DESIGN

KID'S BRIDGE (KOOLANGKA BRIDGE)

FRATELLE AND BROWNLIE ERNST & MARKS (BEAM)

The Koolangka Bridge successfully traverses a constrained site to deliver a physical link between the Perth Children's Hospital and Kings Park, providing children, carers and staff with reprieve from the hospital setting and access to the healing powers of nature.

Externally the bridge is subtle, giving passers-by only a hint of its vibrant interior. From above the playful use of colour noticeably softens as the bridge nestles into its native environment.

As you move across, the sinuous and enveloping form creates ethereal rainbow-framed views of the expansive tree canopy beyond offering a fitting sense of escape.

It is a memorable and joyful experience, that though establishing a connection in fact creates a destination.

PHOTOGRAPHY: ASSET REPORTS





EMERGING ARCHITECT PRIZE

MATT DELROY-CARR

MDC ARCHITECTS

Matt Delroy-Carr is the director of MDC Architects. His fundamental belief is that architecture should be for everyone, and that good design is central to an improved quality of life.

With a focus on infill housing, accessible to the wider majority, Matt has completed the design and documentation of a number of single and multiple residential projects in Perth.

With this experience, Matt was one of the contributors to the state government's draft medium density design guidelines, which aim to improve the design quality of medium density housing for Western Australians and address the need for greater housing diversity and choice.

Prior to establishing his own practice, Matt was a collaborative partner of felix. working on a number of research and competition proposals. Of note was Matt's role as one of the Creative directors for the felix_Giles_Anderson + Goad team for the Australia Pavilion at La Biennale di Venezia 2014, curating the digital content for the exhibit *Augmented Australia* 1914-2014.

Balancing his work with contribution to the profession, Matt has been a sessional staff member at the University of Western Australia since 2009 and continues to coordinate design studios in the undergraduate degree.



WA
ARCHITECTURE
AWARDS
2022



WA
ARCHITECTURE
AWARDS

2022