



Australian
Institute of
Architects

A nighttime photograph of a modern building with a large, illuminated sculpture in the foreground. The building has a flat roof and large windows, some of which are lit from within. The sculpture is made of dark panels with white line drawings of human figures and objects. The scene is set on a grassy slope with trees in the background.

**NSW COUNTRY DIVISION
ARCHITECTURE AWARDS 2022**

FROM THE JURY CHAIR / CO-CHAIR OF THE REGIONAL COMMITTEE



NOEL THOMSON
JURY CHAIR

It was an honour and privilege to be appointed Jury Chair of the NSW Regional Country Division Architecture Awards program that offers the opportunity to acknowledge and award architectural practices in regional areas.

The Awards are a critical asset in the promotion of high-level design excellence for architecture in a regional context all over NSW. The architecture produced showcases the diverse and outstanding projects from small to large scale projects. The awards program provides a platform for peer and public recognition and to celebrate the architecture more broadly with our respective communities and regions.

This year's Regional Country Division Awards program has again demonstrated the high calibre of architecture being produced across regional NSW. It was a pleasure to join my colleagues, Louisa Gee, Jarad Grice, David Holm and Carly Martin to judge the NSW Regional Country Division Architecture Awards.

This year there was a total of 19 submissions across different categories, which after the challenging past year with pandemic building difficulties was encouraging. An innovation this year was that all entrants, as well as providing detailed analysis of their projects, presented additional plans, information, images to highlight successful design outcomes to the jury. This required an enormous commitment from the jurors with their detailed analysing of the submissions and presentations provided for robust discussions when discussing design excellence and project outcomes. We were aware of the responsibility when formulating a consolidated opinion based on the judging criteria across the diverse range of projects.

A recurring theme was the ability of architects to address the many challenges arising from working in regional areas with design quality, high client expectations and where budgets are often limited.

On behalf of the jury, I wish to thank the Institute staff, Peter Fry, Vivian He, Wayne Egelton and Joanna McAndrew for their support and direction. Without their commitment, the awards program, would not be possible.

I'd like to thank the NSW Regional Country Division Committee for their commitment to supporting regional practices and architects.

Finally, I'd like to thank and congratulate all the entrants into this year's Regional Country Division Awards. Your projects play a vital role in showcasing the many varied successful projects across NSW.

NOEL THOMSON, FRAIA
NSW REGIONAL COMMITTEE CO-CHAIR
JURY CHAIR

JURY 2022



NOEL THOMSON FRAIA
JURY CHAIR / NOEL THOMSON ARCHITECTURE



CARLY MARTIN
AKIMBO ARCHITECTURE



DAVID HOLM
COX ARCHITECTURE



LOUISA GEE
LOUISA GEE ARCHITECTS



JARAD GRICE
SAM CRAWFORD ARCHITECTS



JAMES BARNET AWARD

SCRIBBLY BARK HOUSE

WALKNORTH ARCHITECTS

PHOTOGRAPHY: DAVID MOORE & SACHA ZEHNDER

On an exposed sloping corner site in northern NSW there is an exemplar for contemporary home office and residential architecture. Scribbly Bark House exudes timeless modernity and demonstrates an exceptional cohesion and connection to the land and surroundings.

The design has the entry and office at the lower level, with living areas of the family home opening to a striking private sanctuary garden courtyard at the upper level. The external and internal areas are seamlessly integrated with the private framed courtyard that effectively expands the house. Responding to the needs of the occupants and the local

climate, there is a small transitional surrounding veranda consisting of moveable screens, which allows all the spaces to breathe.

The exterior facades use decoration referencing the scribbly gum tree that allows for patterns of light into the interior that change and move throughout the day which gives an extraordinary display at night. This celebration of the contemporary family home, incorporating clever planning into a small yet generous footprint, means Scribbly Bark House is worthy of the 2022 James Barnet Award.





VISION AWARD

SUMMERLAND FARM

DFJ ARCHITECTS WITH
PLUMMER & SMITH

PHOTOGRAPHY: NATALIE MCCOMAS

Summerland Farm is a community asset which celebrates the quintessential Australian working farm, as well as providing a place of employment for people with a disability. More than 80,000 people visit the farm annually, exploring the adventure playground, retail hub, plant nursery and café facilities.

The design for the site deliberately sought to reuse existing buildings, which have been carefully expanded and made more user-friendly through the introduction of covered walkways and verandah elements. The landscape is treated as the hero element, and prioritised throughout the site, in a considered and restrained approach.

The simple forms create varied indoor and outdoor spaces for enjoyment – from the soaring covered entry to the shed refitted as a café, and the market square defined by covered walkways. Visitors of all abilities can enjoy access throughout the site and take in the view over the surrounding garden and play areas. Summerland Farm represents a skilful approach which prioritises and places the user at the centre of the experience.





TIMBER AWARD

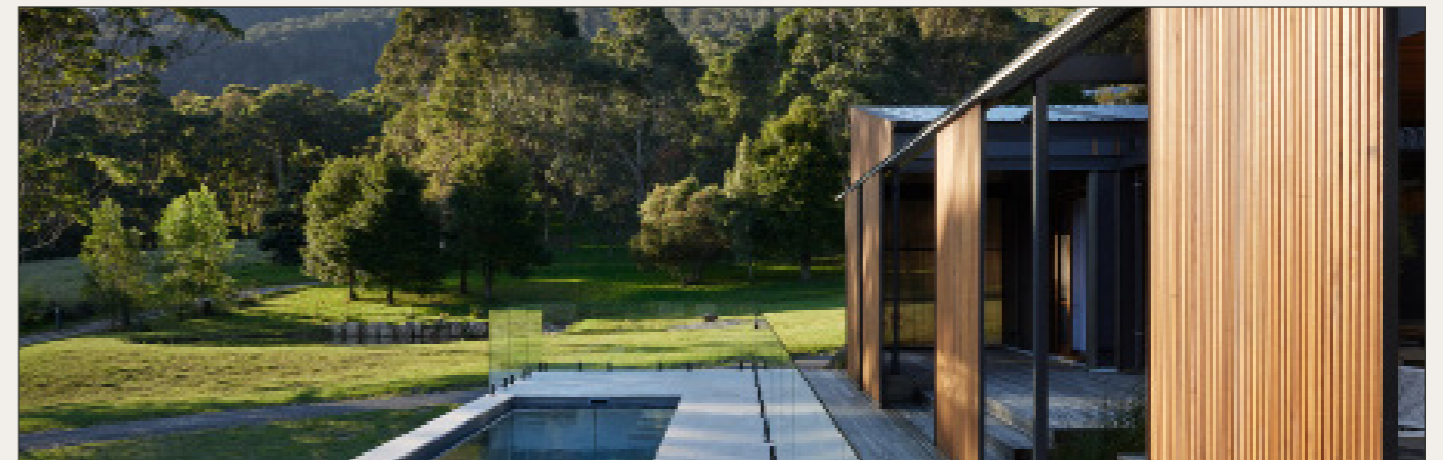
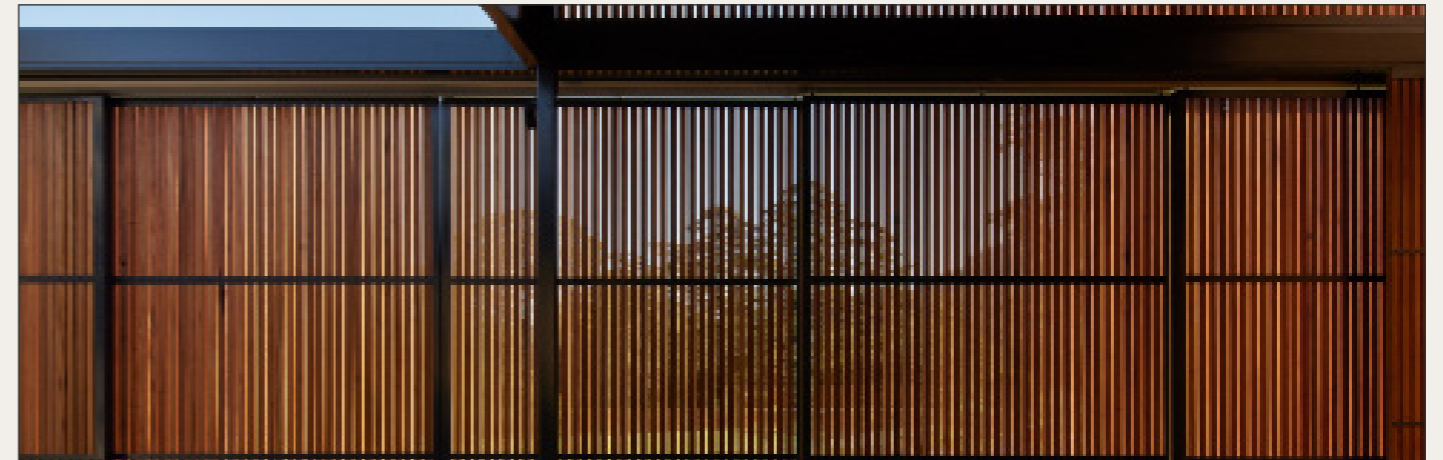
TIMBER SCREEN EXTENSION

LOCALARCHITECT SOUTH COAST

PHOTOGRAPHY: TOM ROE

The Timber Screen Extension house design is driven using timber as a resilient, renewable and affordable material. Sensitively crafted timber detailing separates the new and old whilst reflecting the timber hardwood dress studs used on the cladding of the existing house.

The design successfully defines a series of flexible outdoor rooms using screens as shade devices, wind protection and privacy elements complimenting and completing the existing architectural composition. The warmth embodied in the use of timber utilizing shade shadow and contrast reflects a natural attitude acknowledging a challenging context and climate.





AWARD FOR INTERIOR ARCHITECTURE

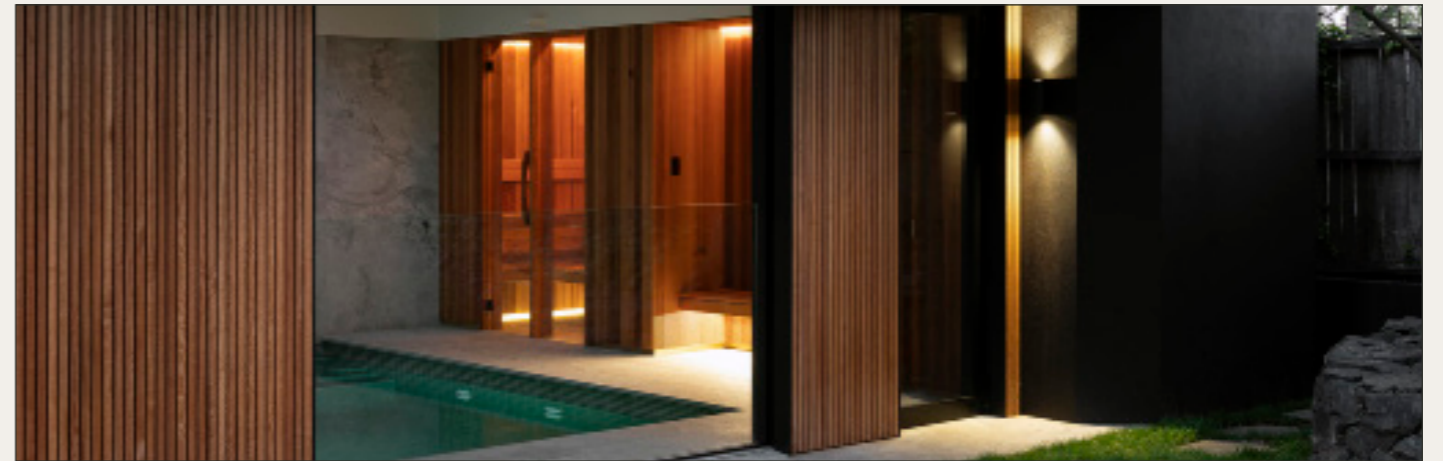
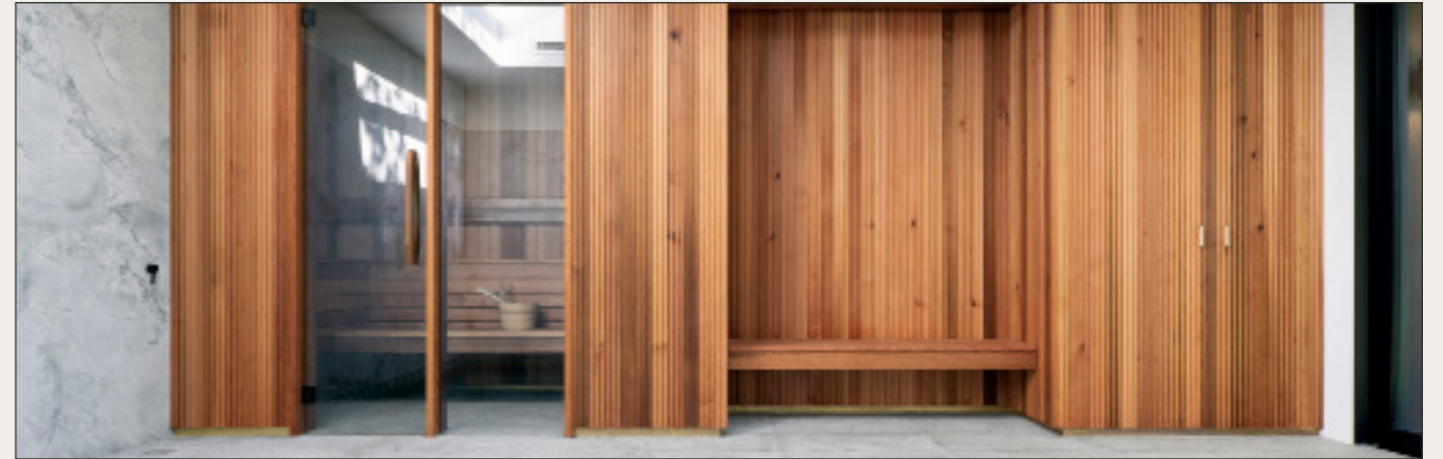
March Pool Pavilion is a rigorously crafted space for relaxation and recreational bathing.

Warm and calm, monolithic stone slabs, vibrant aquamarine tiles, brass highlights and blackbutt cladding, combine, in an interior where visual simplicity belies complex detailing.

MARCH POOL PAVILION

SOURCE ARCHITECTS

PHOTOGRAPHY: TOM FERGUSON





AWARD FOR PUBLIC ARCHITECTURE

Mudgee Regional Arts Precinct blends the refurbishment of the former Cudgegong Shire building with a new gallery environment containing flexible exhibition spaces, tourism offices and ancillary facilities.

The design captures a contemporary expression of the arts and architecture respecting and enhancing an existing heritage environment.

MUDGEE ARTS PRECINCT - GALLERY

BKA ARCHITECTURE

The context of rectilinear heritage listed colonial buildings is juxtaposed by the angled expansion set below the adjacent roof form allowing the existing to retain its primacy. Sculptural skylights capture the essence of heritage chimneys and work with solar panels and a mechanical system with humidification control, aiding sustainability reducing energy consumption.

PHOTOGRAPHY: BRETT BOARDMAN





COMMENDATION FOR
RESIDENTIAL ARCHITECTURE –
HOUSES (NEW)

In historic Burradoo, Osborne House fits within a context of expansive country houses whilst taking a more refined and subdued approach.

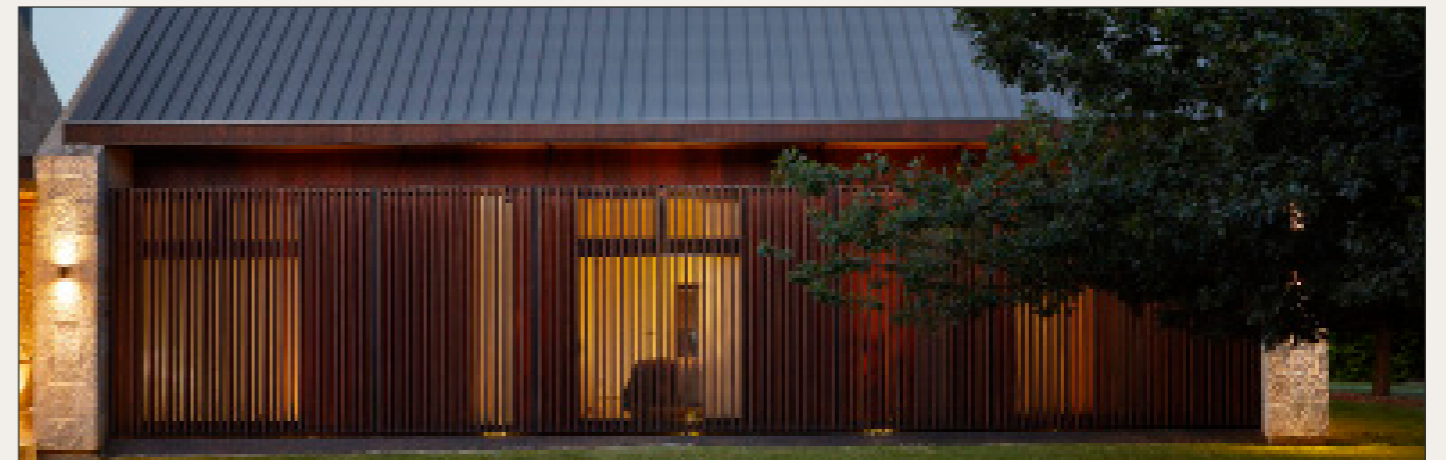
A material palette of timber cladding and zinc provides a lightweight contrast to the robust mass of the sandstone walls anchoring the ends of each pavilion.

OSBORNE HOUSE

TZIALLAS ARCHITECTS

PHOTOGRAPHY: NATALIE HUNFALVAY PHOTOGRAPHY

Three pavilions form a structured and decisive planning arrangement, allowing for expansion and contraction of shifting occupational needs. The entry, via a glazed portal between solid sandstone clad walls, which visually express the geology of the region, isolates a guest pavilion large enough to accommodate visiting family from the two everyday living pavilions.





AWARD FOR RESIDENTIAL ARCHITECTURE – HOUSES (NEW)

MULI MULI

DFJ ARCHITECTS

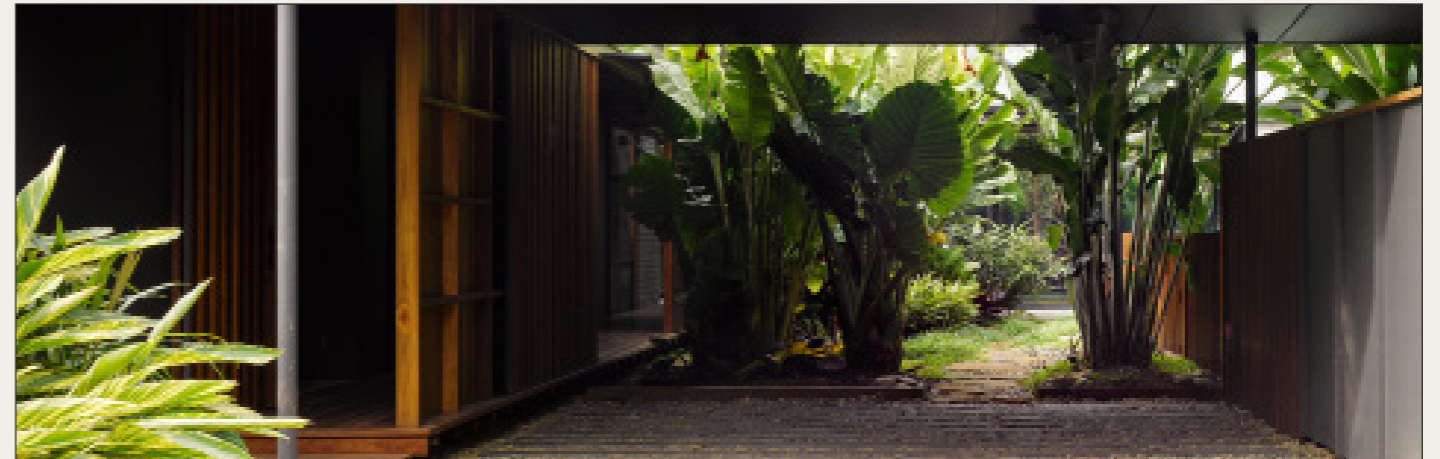
PHOTOGRAPHY: CHRISTOPHER FREDERICK JONES

Muli Muli is a modern take on the traditional beach house. A refreshingly restrained floor plan sees the architecture celebrated through careful technical detailing, considered material choices and connection to the lush landscape setting.

The house is designed to sit towards the edges of the block allowing the landscape to be prioritised and celebrated. A sense of privacy within the suburban context is created through internal courtyard spaces that offer views of the garden rather than neighbouring houses.

The architect's approach to embrace the mild coastal climate results in a clever and efficient footprint. Functions are separated into pavilions and the hallway circulation is located externally. While rooms are modest in size, they expand through the placement of windows that embrace garden views and draw in natural light and ventilation.

The new house by DFJ is an excellent example of a quality design outcome that is modest, flexible, and beautifully executed.





AWARD FOR RESIDENTIAL ARCHITECTURE
- NEW

SCRIBBLY BARK HOUSE

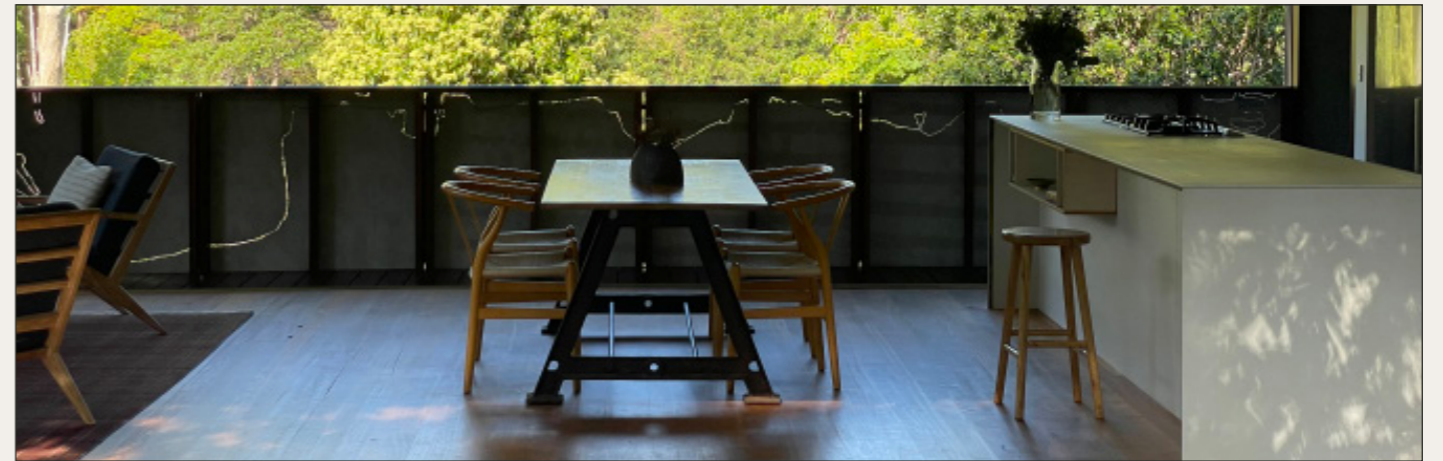
WALKNORTH ARCHITECTS

PHOTOGRAPHY: DAVID MOORE & SACHA ZEHNDER

Scribbly Bark House is a celebration of the contemporary family home, incorporating clever planning into a small yet generous footprint. The design is split over two levels, and seamlessly integrates a home office studio within the home. The exterior of the house is strikingly embellished with decorated operable screens, created by artist Georgie Lucock in reference to the bark patterns of the local Scribbly gum tree. The continuous artwork of perforated pattern wraps around the perimeter of the house, also casting patterns of light into the interior that change and move throughout the day.

The house has been designed to respond to the needs of the occupants and the local climate, the screens, and windows able to be opened and closed to adapt to the changing conditions. A courtyard created adjacent to the living zone effectively expands the footprint of the house, providing an additional room in good weather.

Scribbly Bark House is joyous, elegant, and refined - an exemplar of contemporary Australian residential architecture.





COMMENDATION FOR
RESIDENTIAL ARCHITECTURE
- HOUSES (ALTERATIONS AND
ADDITIONS)

**TIMBER SCREEN
EXTENSION**

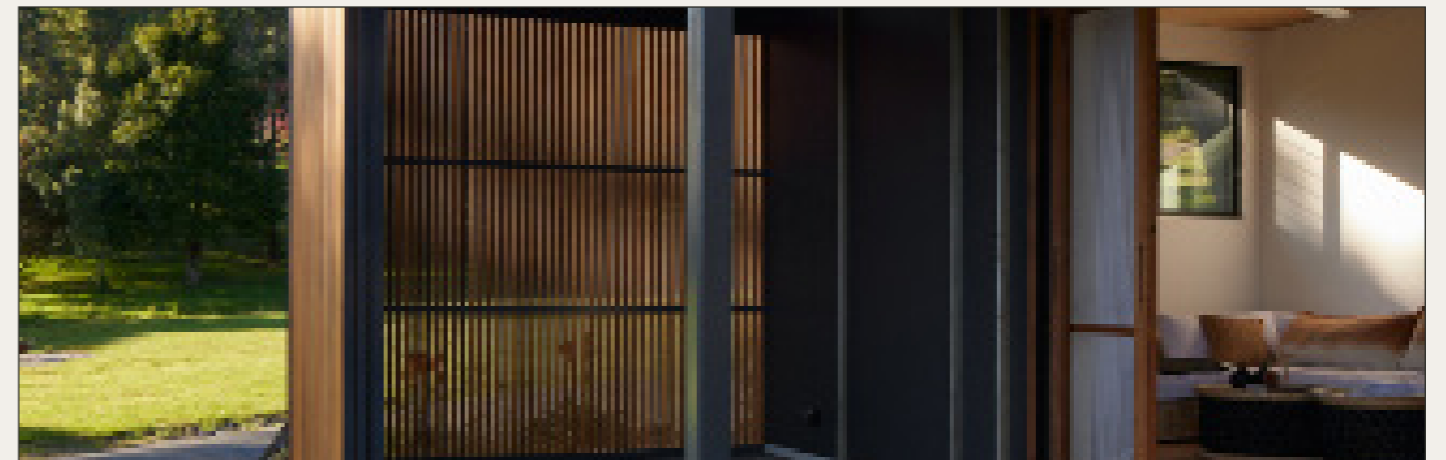
LOCALARCHITECT SOUTH COAST

PHOTOGRAPHY: TOM ROE

The Timber Screen Extension house is a carefully crafted blend and expansion to an existing house in the Southern Highlands of NSW. The design explores a series of flexible outdoor rooms using screens as shade devices, wind protection and privacy elements whilst also complimenting and completing the existing architectural composition.

The design explores the idea of flexible living that can be used year round via careful orientation and detailing.

The thoughtful use of a restricted palette of materials and minimal detailing has allowed the house to be achieved to a budget whilst allowing greater usage throughout the varying annual climates.





AWARD FOR RESIDENTIAL
ARCHITECTURE - HOUSES
(ALTERATIONS AND ADDITIONS)

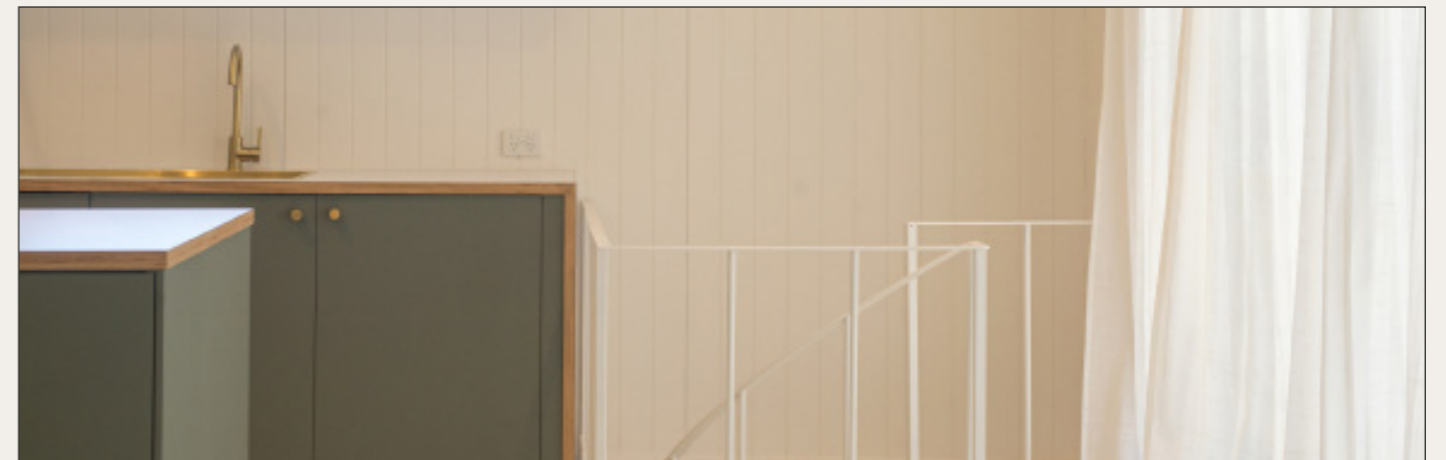
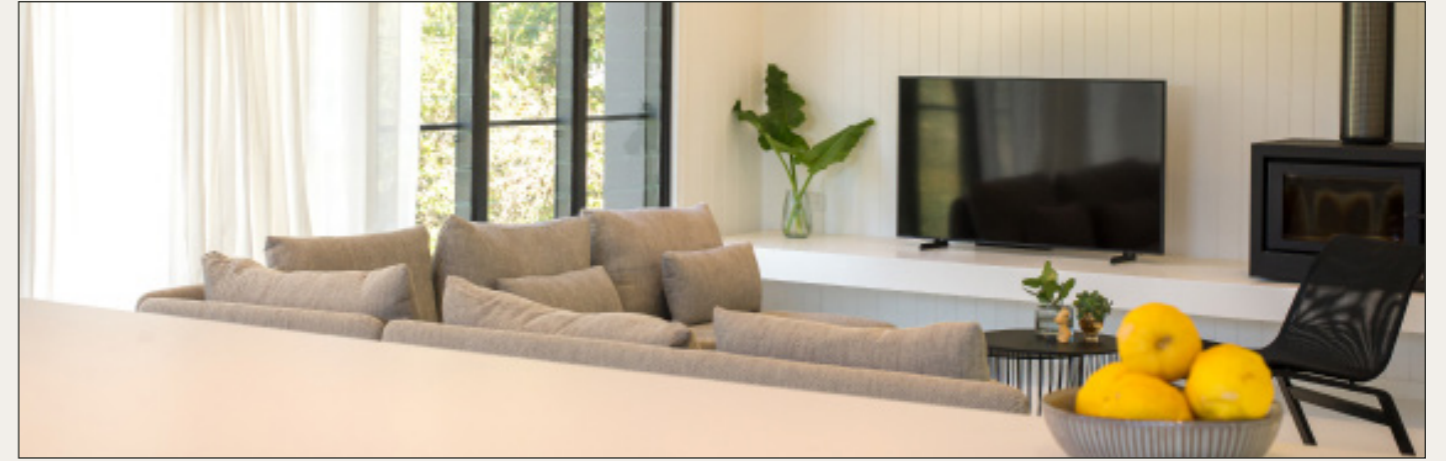
MY MALUA

TZIALLAS ARCHITECTS

PHOTOGRAPHY: GINA UMOREN PHOTOGRAPHY

My Malua is a humble and beautifully executed renovation of a tired beach house. All too often older houses are knocked down in favour of big, bold new builds, and with that the character and stories of the street are lost. My Malua sensitively reflects the scale, materiality and tone of its surrounding area and creates a considered outcome for the streetscape through the redesign of the front facade.

Key challenges of the flawed existing house are addressed through simple but considered moves such as opening the house to views, natural light, and ventilation. The architect took a conscious approach to empower the three girls who will grow up in the house to act as the clients. This personal approach is reflected in the transformation of the internal spaces and the attention to detail in each room. The outcome is a great celebration of architecture in a small community, and a refreshing reminder that older houses can have a second life.





AWARD FOR COMMERCIAL ARCHITECTURE

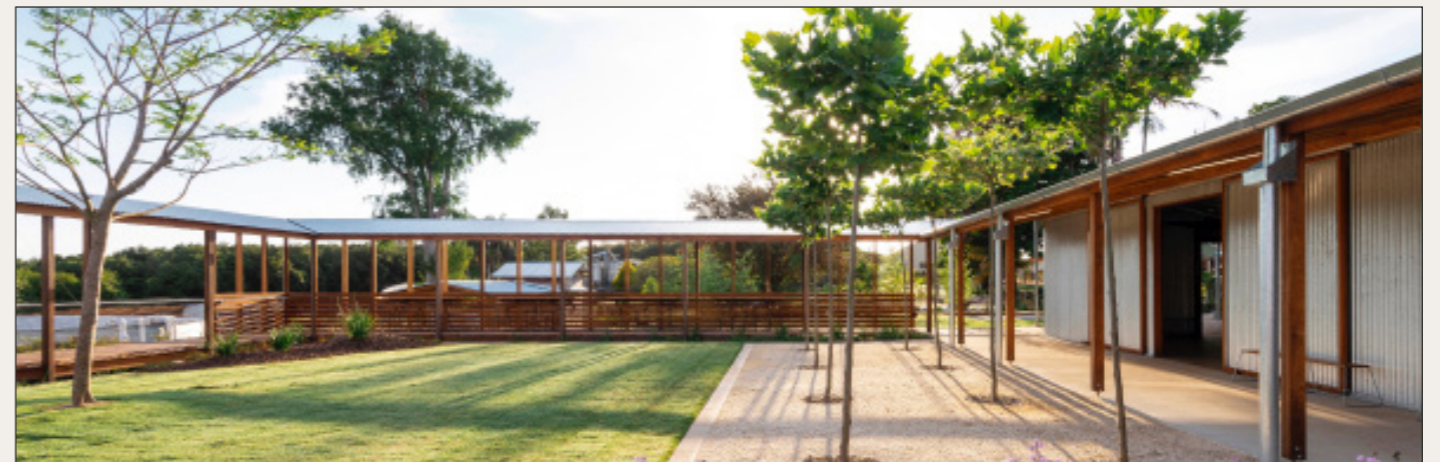
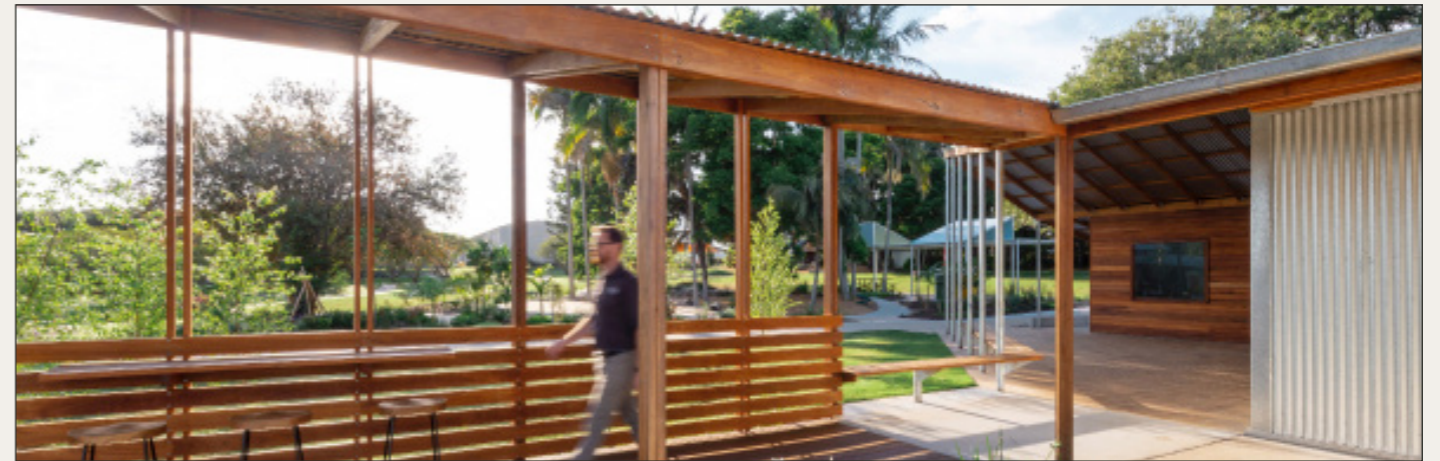
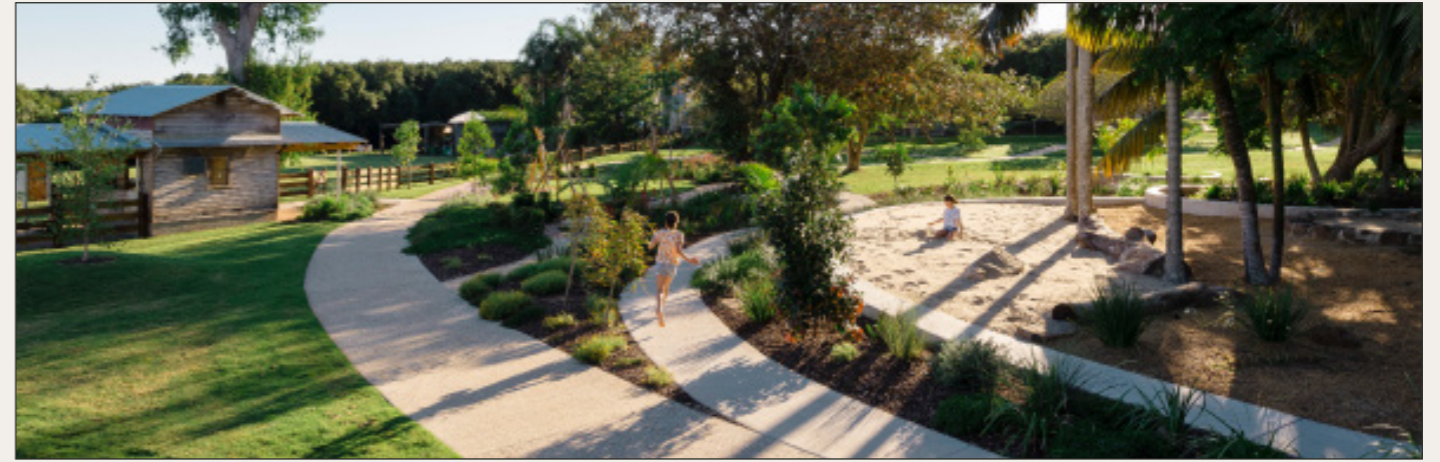
SUMMERLAND FARM

DFJ ARCHITECTS WITH PLUMMER & SMITH

PHOTOGRAPHY: NATALIE MCCOMAS

Summerland Farm demonstrates a refined and restrained approach as it draws existing buildings, new structures, and landscape into a cohesive whole. The reimagined masterplan features a new adventure playground set in lush landscaping, overlooked by the retail hub, housing a café, gift/produce shop, back-of-house facilities, plant nursery and ticket booth.

An existing large shed was adapted to house the majority of the program, and elegantly enhanced through the addition of wrap-around verandas. These verandas provide a new soaring entry canopy and form a market square connecting with the plant nursery.



While simple in form and material, these additions augment the existing and enhance the site's agricultural context.

The sequence of indoor and covered outdoor spaces create a seamless connection to the surrounding landscape and play areas. Summerland Farm prioritises landscape and user experience in a successful and sophisticated way, providing an exemplary series of buildings and spaces for visitors to enjoy.



COMMENDATION FOR SMALL
PROJECT ARCHITECTURE

OBERON FARM STAY

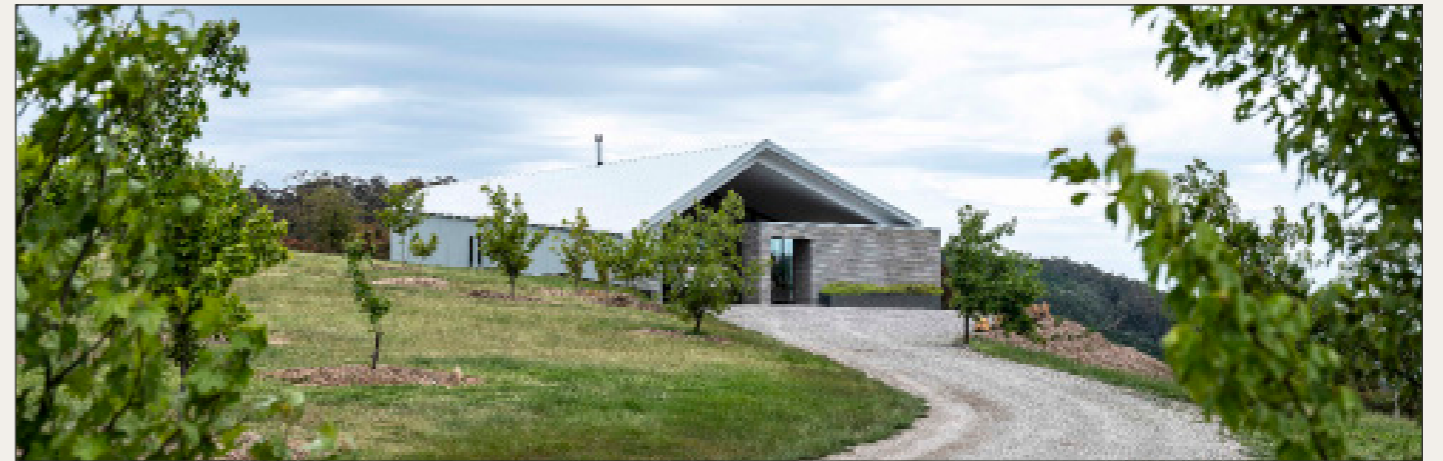
SOURCE ARCHITECTS

PHOTOGRAPHY: TOM FERGUSON

In picturesque valleys surrounding Oberon, there is a simple but sculptural galvanised iron clad form set into the hillside that has structured and decisive planning arrangement for this farm stay accommodation experience.

There is a strong rectangular plan for the living and bedroom areas that face north and provides the dramatic views to the undulating hills beyond. The angled service area to the south provides for circulation and working spaces that allow for a dramatic sloping roof form which anchors the building to the hill.

The house is designed to be completely off grid and the passive environmental systems were key in the design with a single depth floor plan allowing for cross ventilation. The interior spaces are refined but restrained with robust finishes and the project represents extraordinary value for such a very tight budget.





AWARD FOR SMALL PROJECT
ARCHITECTURE

MARCH POOL PAVILION

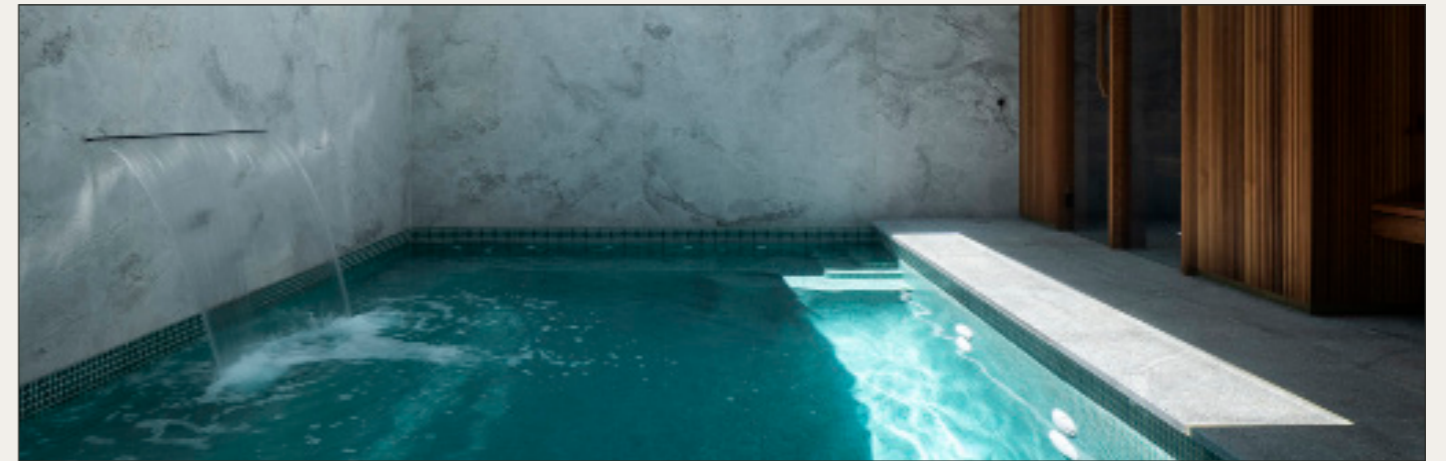
SOURCE ARCHITECTS

PHOTOGRAPHY: TOM FERGUSON

A stand-alone addition to a previous renovation and extension of a heritage home in Orange, March Pool Pavilion is sited within the established garden and provides its occupants with year-round pool access in the cool climate of the central tablelands.

The singular form makes a big impact. A limited external palette of black render, steel and blackbutt timber elements, fastidiously detailed to conceal obvious joints or connection points, creates a monolithic form which is at once sculptural and commanding of attention, yet recessive within its surrounds.

The garage cum gym is concealed year-round, while in good weather a large skylight and sliding timber door open the small footprint of the internal pool area to the garden. The skylight facilitates a delightful and ever shifting play of light across the pool, sauna, and minimal interiors, a finely composed interplay of grey dolomite stone slabs, blackbutt and aquamarine water.



2022 NSW REGIONAL COUNTRY DIVISION ARCHITECTURE AWARDS– ALL ENTRIES



COMMERCIAL ARCHITECTURE

SUMMERLAND FARM

DFJ ARCHITECTS WITH PLUMMER & SMITH

PHOTOGRAPHY: NATALIE MCCOMAS



EDUCATIONAL ARCHITECTURE

NOVA

ADAM LITHERLAND ARCHITECT

PHOTOGRAPHY: DAVID WAUGH



INTERIOR ARCHITECTURE

MARCH POOL PAVILION

SOURCE ARCHITECTS

PHOTOGRAPHY: TOM FERGUSON



INTERIOR ARCHITECTURE

NOVA

ADAM LITHERLAND ARCHITECT

PHOTOGRAPHY: DAVID WAUGH



HERITAGE ARCHITECTURE

CHARLOTTE STREET

DFJ ARCHITECTS

PHOTOGRAPHY: CHRISTOPHER FREDERICK JONES



PUBLIC ARCHITECTURE

MUDGEES ARTS PRECINCT - GALLERY

BKA ARCHITECTURE

PHOTOGRAPHY: BRETT BOARDMAN



SMALL PROJECT ARCHITECTURE

MARCH POOL PAVILION

SOURCE ARCHITECTS

PHOTOGRAPHY: TOM FERGUSON



SMALL PROJECT ARCHITECTURE

OBERON FARM STAY

SOURCE ARCHITECTS

PHOTOGRAPHY: TOM FERGUSON

2022 NSW REGIONAL COUNTRY DIVISION ARCHITECTURE AWARDS– ALL ENTRIES



RESIDENTIAL ARCHITECTURE – HOUSES (ALTERATIONS AND ADDITIONS)

JEWEL HOUSE

SOURCE ARCHITECTS

PHOTOGRAPHY: TOM FERGUSON



RESIDENTIAL ARCHITECTURE – HOUSES (ALTERATIONS AND ADDITIONS)

CHARLOTTE STREET

DFJ ARCHITECTS

PHOTOGRAPHY: CHRISTOPHER FREDERICK JONES



RESIDENTIAL ARCHITECTURE – HOUSES (NEW)

Q HOUSE

SOURCE ARCHITECTS

PHOTOGRAPHY: TOM FERGUSON



RESIDENTIAL ARCHITECTURE – HOUSES (NEW)

BALANCED HOUSE

SOURCE ARCHITECTS

PHOTOGRAPHY: ALEX MCINTYRE



RESIDENTIAL ARCHITECTURE – HOUSES (ALTERATIONS AND ADDITIONS)

TIMBER SCREEN EXTENSION

LOCALARCHITECT SOUTH COAST

PHOTOGRAPHY: TOM ROE



RESIDENTIAL ARCHITECTURE – HOUSES (ALTERATIONS AND ADDITIONS)

MY MALUA

TZIALLAS ARCHITECTS

PHOTOGRAPHY: GINA UMOREN PHOTOGRAPHY



RESIDENTIAL ARCHITECTURE – HOUSES (NEW)

SUVLA HOUSE

BARKER ARCHITECTS

PHOTOGRAPHY: DAVID TAYLOR & LUKE BARKER



RESIDENTIAL ARCHITECTURE – HOUSES (NEW)

MULI MULI

DFJ ARCHITECTS

PHOTOGRAPHY: CHRISTOPHER FREDERICK JONES

2022 NSW REGIONAL COUNTRY DIVISION ARCHITECTURE AWARDS– ALL ENTRIES



RESIDENTIAL ARCHITECTURE - HOUSES (NEW)

SCRIBBLY BARK HOUSE

WALKNORTH ARCHITECTS

PHOTOGRAPHY: DAVID MOORE



RESIDENTIAL ARCHITECTURE - HOUSES (NEW)

OSBORNE HOUSE

TZIALLAS ARCHITECTS

PHOTOGRAPHY: TOM FERGUSON



RESIDENTIAL ARCHITECTURE - HOUSES (NEW)

Q HOUSE

ROBERTSON COLLECTIF

PHOTOGRAPHY: SIMON WHITBREAD

THE AUSTRALIAN INSTITUTE OF ARCHITECTS THANKS THE PARTNERS OF THE 2022 NSW COUNTRY DIVISION ARCHITECTURE AWARDS

MAJOR EVENT PARTNER



EVENT PARTNER





Australian
Institute of
Architects

NSW COUNTRY DIVISION ARCHITECTURE AWARDS 2022

COVER IMAGE : JAMES BARNET AWARD | SCRIBBLY BARK HOUSE | WALKNORTH ARCHITECTS | PHOTOGRAPHY: DAVID MOORE & SACHA ZEHNDER