



he beginning

Bella Bower

Shea O'Donoghue

Carlee Suen

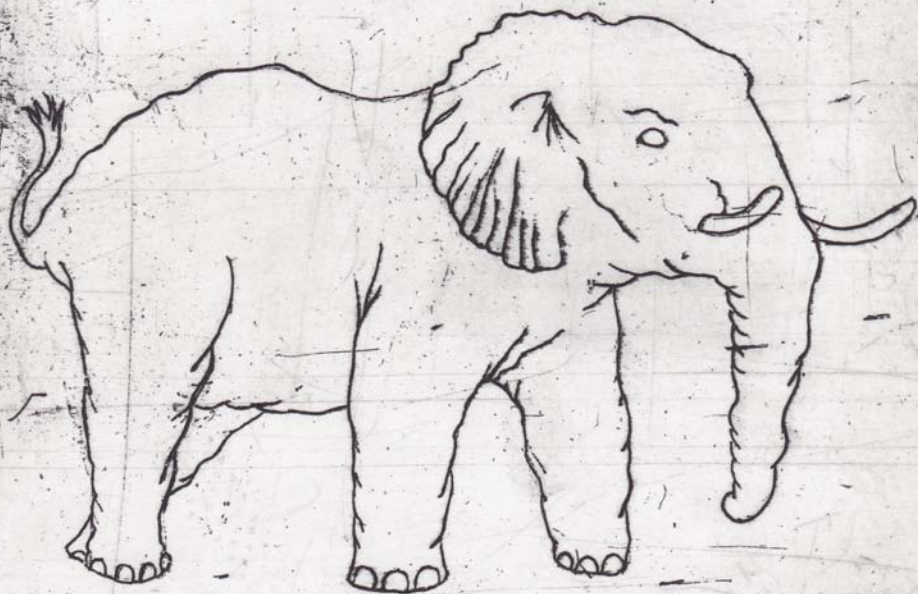
97

In 2008 the percentage
of people living in cities
exceeded 50 percent

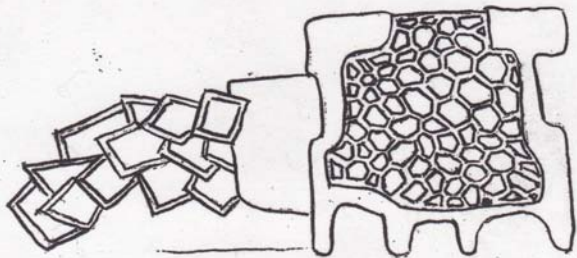




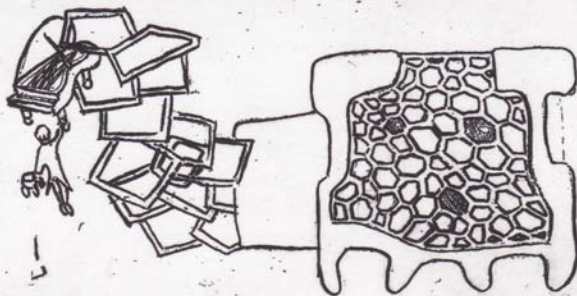
37.5 percent of them wore high heels

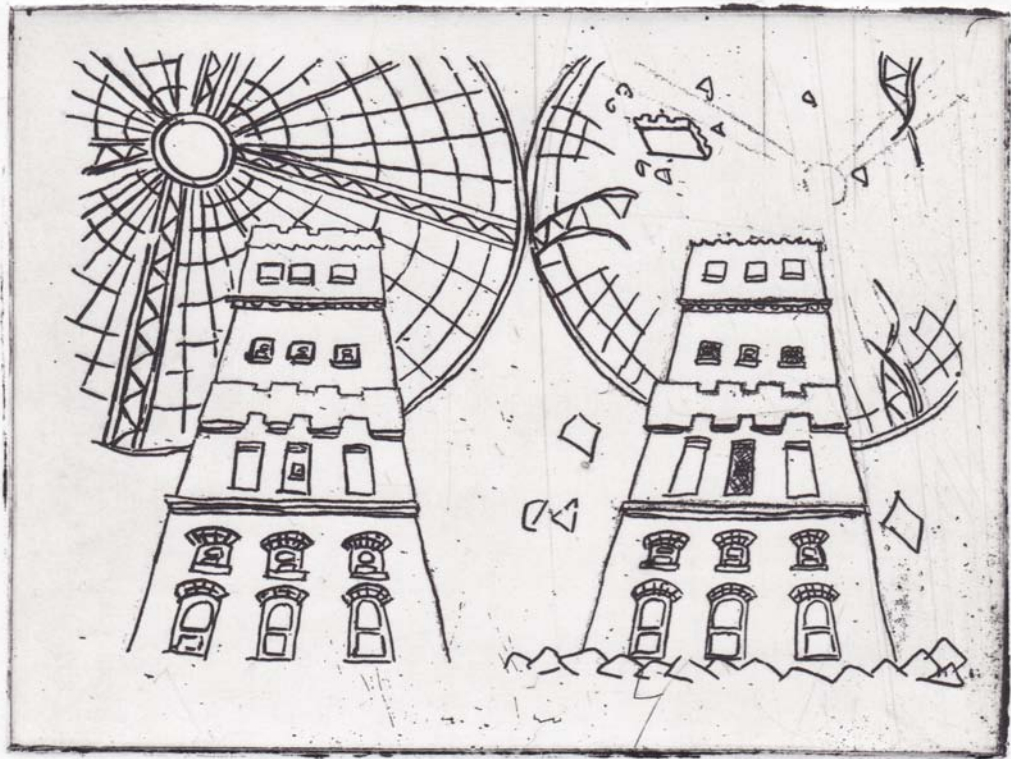


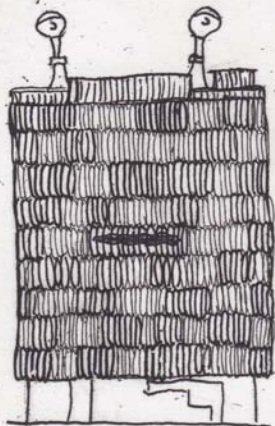
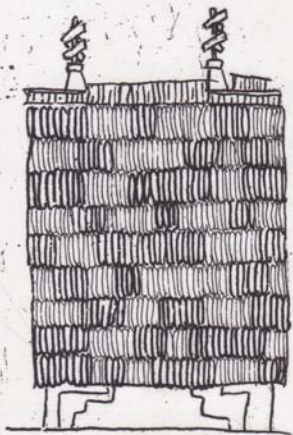
with pressure exceeding that of an elephant

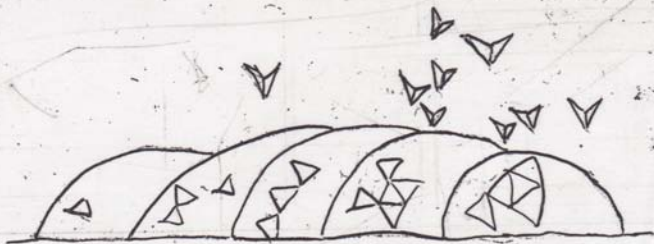


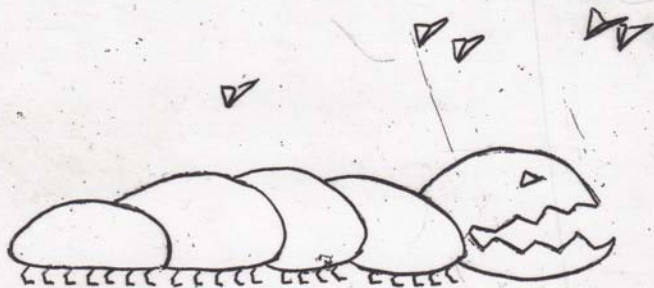
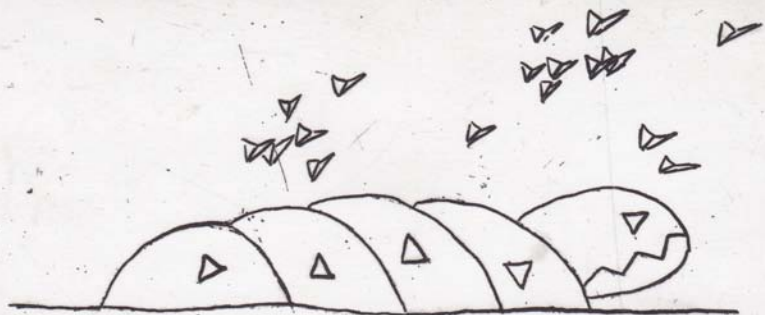
One day the buildings could take no more











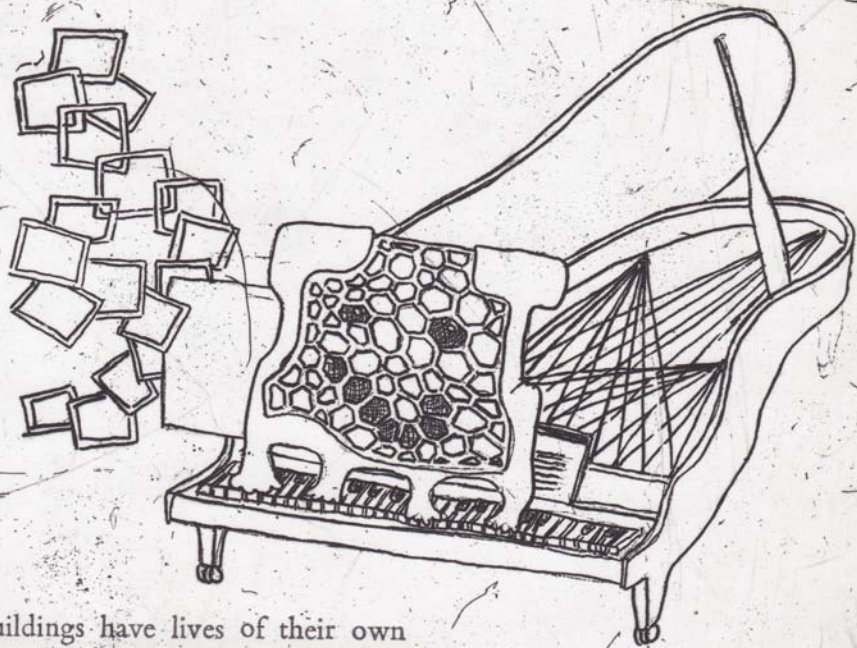
eleven years later...

we awaken

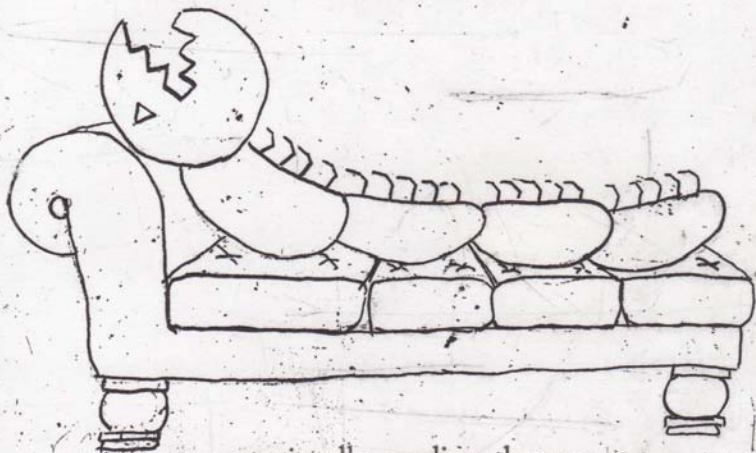


to a changing city

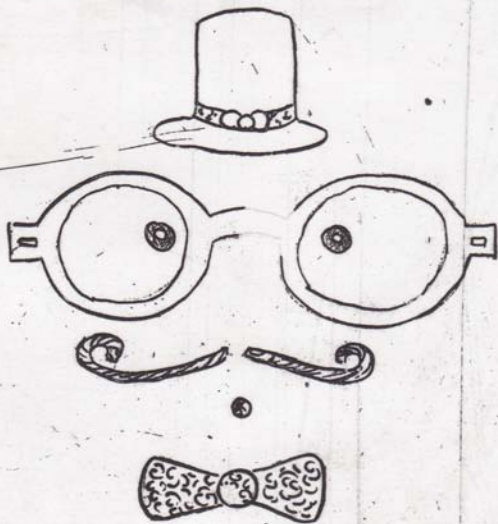




buildings have lives of their own



occasionally needing therapy

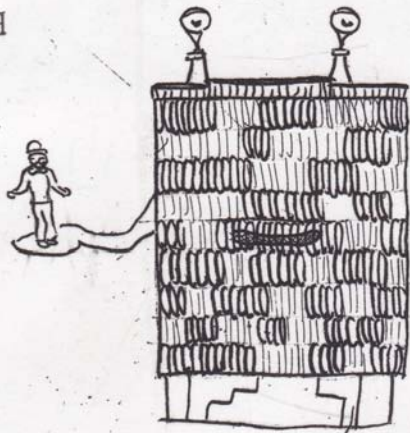


Architects become building psychologists

And where are the people?



They are exceedingly good
architectural psychologists



Or evolution has played its
part...