

Allendale Square

Address 77 St Georges Terrace, Perth, WA, 6000

Practice Cameron Chisholm & Nicol

Designed c.1970-74 Completed 1976

History & Description Constructed during the mineral boom of the 1970s, the *Allendale Square* development required the demolition of several smaller buildings and amalgamation of the lots on which they stood. This concentration of plot ratio to enable large scale development whilst not innovative, allowed some flexibility in the siting of the tower and was feature of contemporaneous urban development (AMP Building & City Centre) demonstrating a push for progress and dramatic alteration of the Perth city skyline in the 1970s.

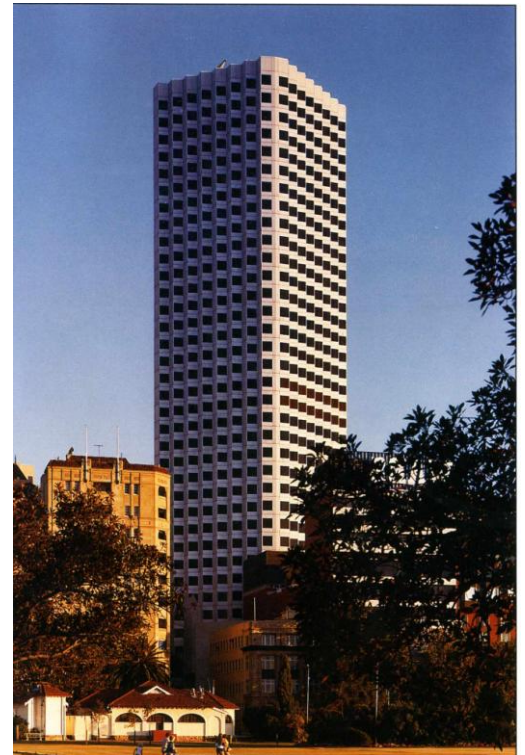
The speculative development comprised 4 components: a high-rise office tower; low-rise tenancies, pedestrian plaza & underground shopping concourse; and Chapel with residential accommodation. The space-frame covered plaza addressed issues of civic amenity current at the time of construction whilst the underground concourse was later connected to the network of pedestrian access-ways through the city.

Allendale Square is a reinforced concrete structure in a square plan form set at 45° to St Georges Tce. The diamond orientation of the 32-storey tower which has folded wall planes allows window panels to the north & south for views and light, and aluminium clad surfaces to the east & west, to reduce heat loading. Seismic considerations influenced the structural design comprised of vertical perimeter members extending to the raft footing, combining with a central service core to preclude the use of internal columns. The faceted design of the tower was reflected in the geometric spaces of the low-rise building and the Chapel which has a strong visual identity expressed in sculptured masonry forms.

As well as remodelling of the low-rise building, there have been several programmes of interior refurbishment and changes in ownership since opening on 3 August 1976. The building received the RAIA (WA Chapter) Architecture Design Award and Bronze Medal Award as well as the ACI Energy Conservation Award and Alcoa of Australia Award for Architecture and remains a highly regarded icon of WA and Australian architecture.

Statement of Significance As one of the landmark high-rise buildings of the 1970s mineral building boom *Allendale Square* has ongoing significance for its high aesthetic and civic contributions. The sleek multi-faceted form, its skewed siting and associated concourse, and the environmental and technological resolution have been recognised through numerous awards. The building is a fine example of RAIA Gold Medal awarded architects Cameron Chisholm & Nicol, and particularly their work of the late twentieth century. It is an important national example of the blending of speculative urban development, aesthetic ideals and environmental and civic amenity.

Criteria Applicable N1. Significant heritage value in demonstrating the principal characteristics of a particular class or period of design.
N2. Significant heritage value in exhibiting particular aesthetic characteristics.
N3. Significant heritage value in establishing a high degree of creative achievement.
N5. Having a special association with the life or works of an architect of significant importance in our history.
N6. Significant heritage value in demonstrating a high degree of technical achievement of a particular period.



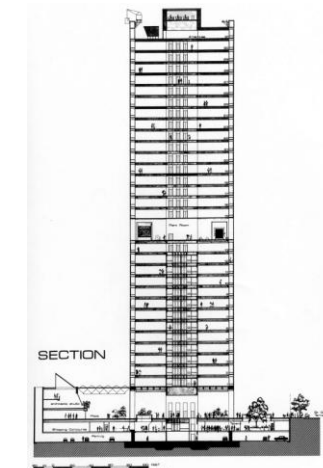
Allendale Square from the south-east (CCN Office brochure, c. 1995)



Ground level of *Allendale Square* from the north-east (Katrina Chisholm, 2011)



Entrance to Chapel on east side of plaza level, (Katrina Chisholm, 2011)



Allendale Square
Section
(*The Architect*,
82/3, p. 26)